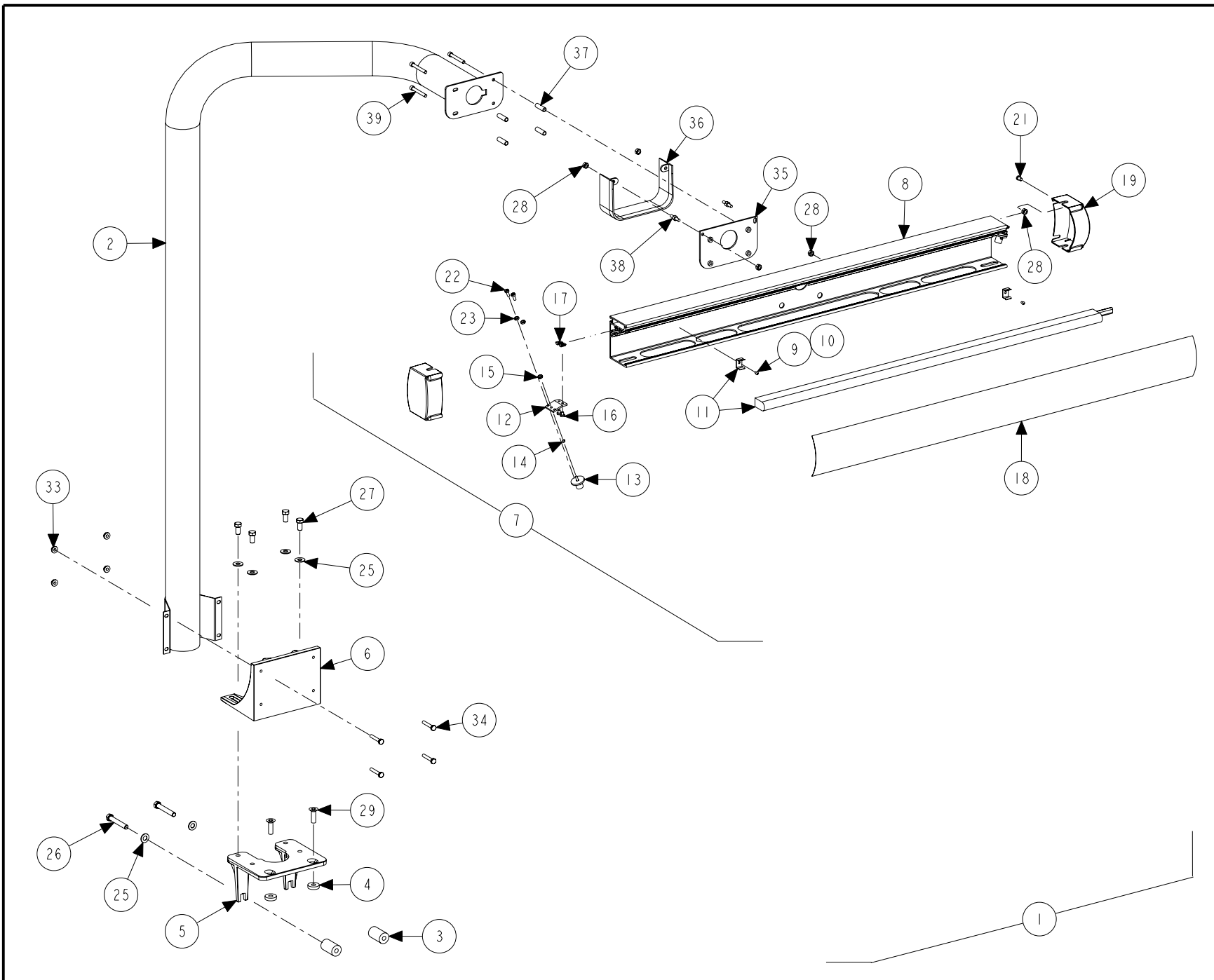


**TOP DEAD CENTER LASER SYSTEM**  
REFER TO NEXT SHEET FOR PARTS DESCRIPTION LISTING



**PARTS DESCRIPTION LISTING**

Index No.	Part Number	Description	Qty.
1	20-2166-1	KIT, TOP DEAD CENTER LASER SYSTEM (Consists Of:)	1
2	16-912-1-005	TUBE ASSEMBLY, TDC LASER SUPPORT	1
3	46-598-2	SPACER, TDC LASER 92XX .25 INCH	2
4	46-599-2	SPACER, TDC LASER 92XX 1.7 INCH	2
5	11-1243-2	SUPPORT, TDC LASER BASE 9700	1
6	14-1129-2	BRACKET, TDC LASER BASE	1
7	105-531-1	HOUSING, TDC LASER HEADER ASSEMBLY	1
8	105-514-2	HOUSING, TDC LASER HEADER	1
9	76-12-2	NUT, HEX 6-32	2
10	75-16-2	ROUND HEAD MACHINE SCREW 6-32 X 1/4 INCH	2
11	35-147-2	LAMP, FLUORESCENT 24 WATT, TDC LASER	1
12	14-1130-2	BRACKET, TDC LASER MOUNT	2
13	105-530-1	HOUSING, TDC LASER ASSEMBLY	2
14	98-427-2	SPRING, TDC LASER ADJUSTMENT	2
15	76-61-2	NUT, KEPS 10-32	2
16	75-608-2	PAN HEAD MACHINE SCREW 10-32 X .31 INCH	4
17	76-382-2	NUT-T	4
18	190-192-2	SIGN, TDC LASER SYSTEM	1
19	69-1204-2	COVER, TDC LASER END CAP	2
20	Field Purchase	ADHESIVE, LOCITTE 242	A/R
21	75-535-2	LOW HEAD SOCKET CAP SCREW 1/4-20X.38 INCH	2
22	75-161-2	PAN HEAD MACHINE SCREW 10-32 X .50 INCH	4
23	76-11-2	NUT, HEX 10-32	4
24	128-1155-2	DECAL, LASER COMPLIANCE 2M (Not Illustrated)	1
25	77-65-2	WASHER, FLAT 3/8 INCH	6
26	74-16-2	HEX HEAD CAP SCREW 3/8-16X2.50 INCH (FULL-THREAD)	2
27	74-59-2	HEX HEAD CAP SCREW 3/8-16 X .75 INCH (FULL-THREAD)	4
28	76-13-2	NUT, HEX 1/4-20	6
29	74-461-2	BOLT, FLAT HEAD SOCKET CAP SCREW 3/8-16 X 1/4 INCH	2
30	37-568-1	WIRE ASSEMBLY, TDC LASER LIGHT (Not Illustrated)	1
31	36-59-2	RECEPTACLE, IEC 320 FEMALE (Not Illustrated)	1
32	76-159-2	NUT, KEPS 3/8 - 16 (Not Illustrated)	4
33	76-367-2	NUT, FLANGE 1/4 - 20	4
34	75-703-2	HEX HEAD CAP SCREW 1/4-20 X 1.5 INCH GRADE 8	4
35	51-2332-1-005	PLATE, TDC HAMMERHEAD MOUNT ASSEMBLY	1
36	69-1271-2	COVER, TDC ADJUSTMENT	1
37	98-443-2	SPRING, TDC LASER ADJUSTMENT	4
38	134-141-2	STUD, 1/4-20 DOUBLE ENDED, BRASS	2
39	75-309-2	SOCKET HEAD CAP SCREW 1/4-20 X 2.00 INCH	4



11250 HUNTER DRIVE BRIDGETON, MO 63044

PPP-Print Code Required  
A/R-As Required  
REF-Reference