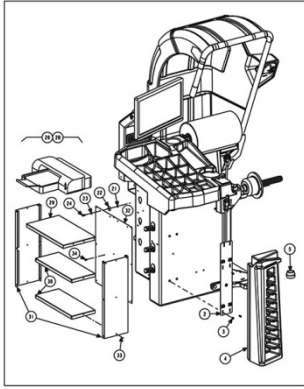
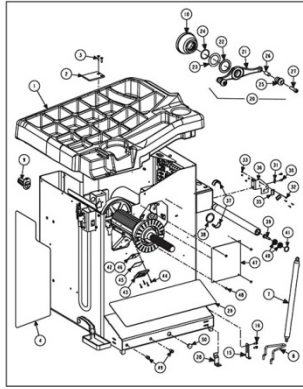


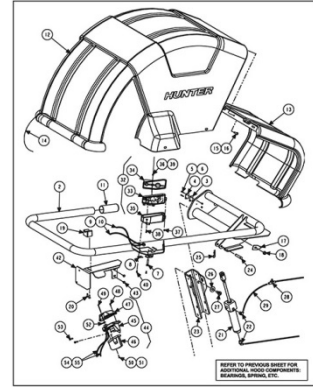
ROAD FORCE TOUCH ELITE (RFE) (For Domestic and Export)



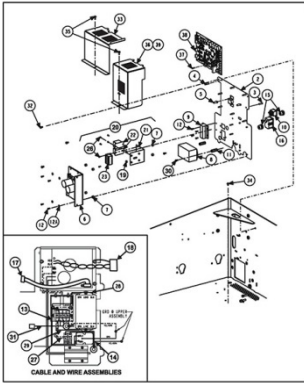
SHEET 3



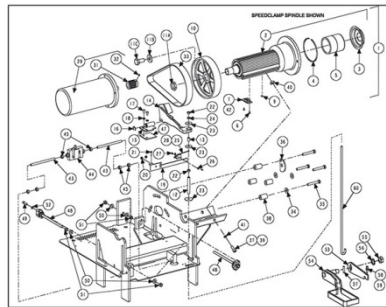
SHEET 4



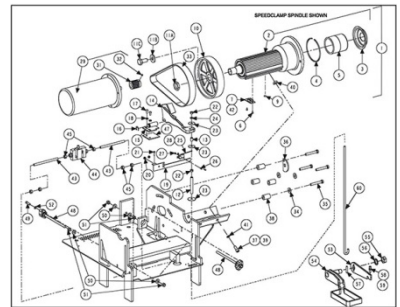
SHEET 5



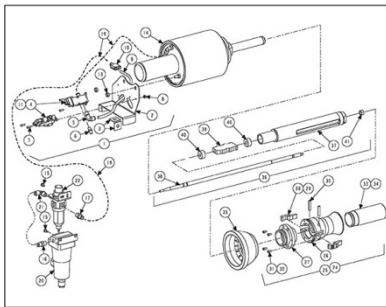
SHEET 6



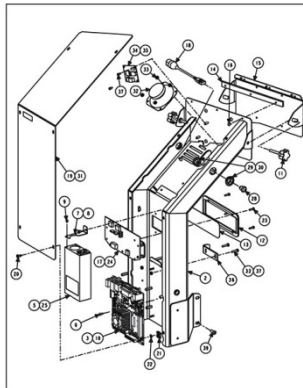
SHEET 7



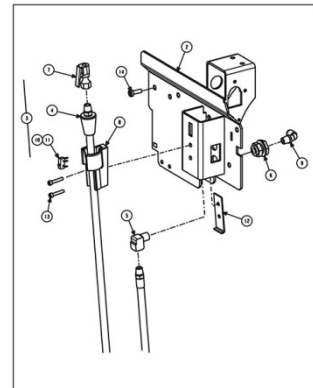
SHEET 8



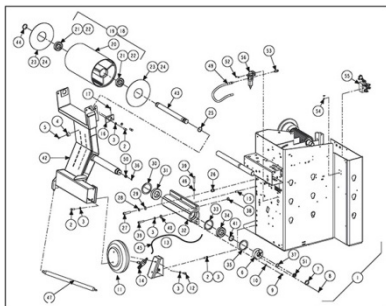
SHEET 9



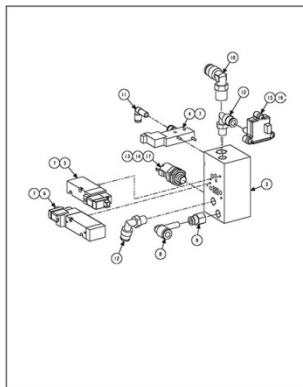
SHEET 10



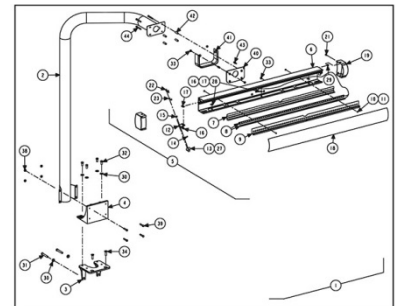
SHEET 11



SHEET 12



SHEET 13



SHEET 14

ROAD FORCE TOUCH ELITE (RFE) (For Domestic and Export)

REFER TO NEXT SHEET FOR PARTS DESCRIPTION LISTING

PARTS DESCRIPTION LISTING

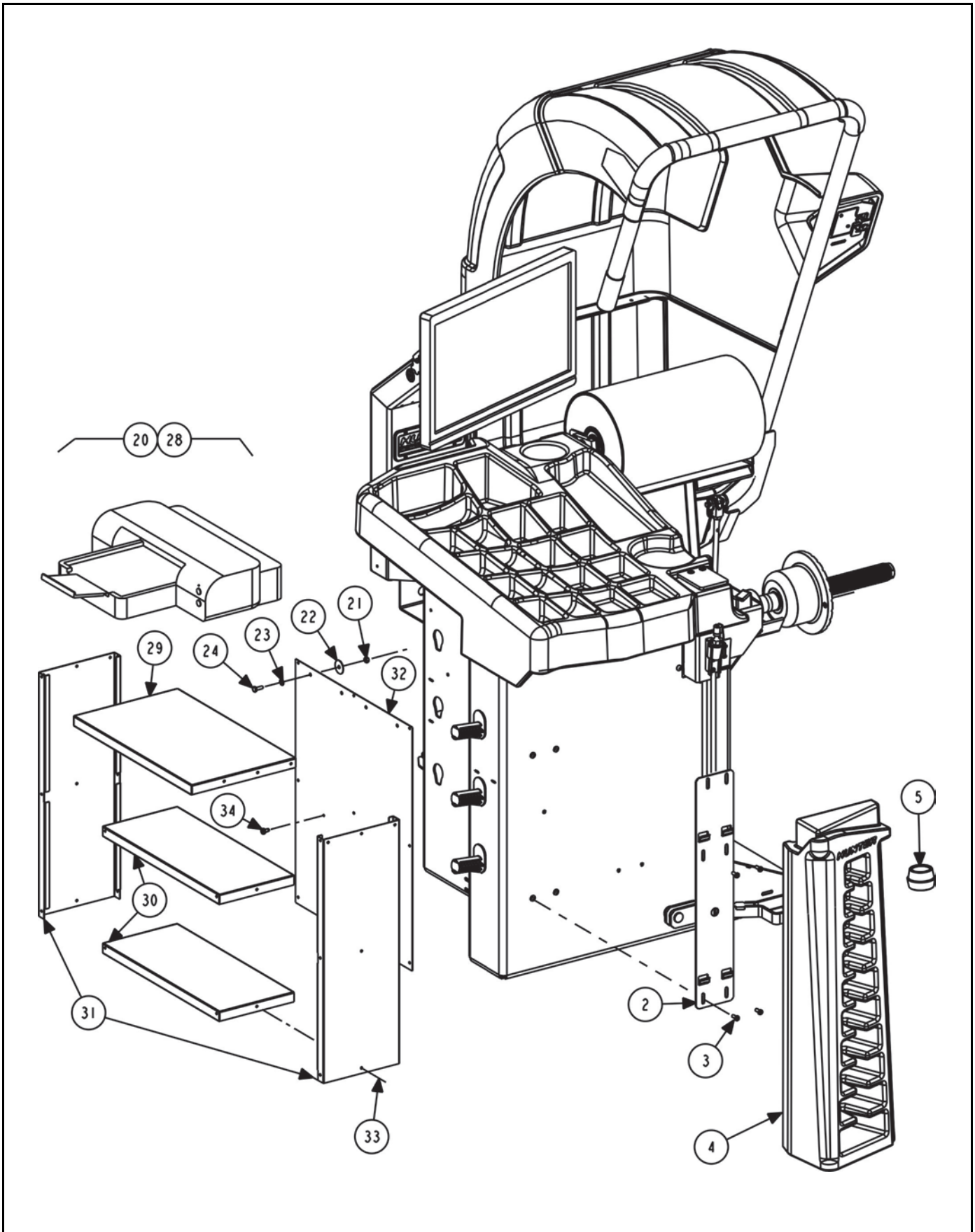
Sheet No.	Description <i>(PDF navigation - click on image or description to go to sheet)</i>
3	COLLET STORAGE AND PRINTER OPTION
4	TUB EXTERIOR COMPONENTS AND WING NUT
5	HOOD AND SMARTSCAN
6	ELECTRIC PANEL
7	VIBRATION STRUCTURE
8	VIBRATION STRUCTURE
9	SPEEDCLAMP FEATURE
10	TOUCH SCREEN SUPPORT
11	INFLATION SUPPORT ASSEMBLY, 11-1633-1
12	LOAD ROLLER
13	LOAD ROLLER MANIFOLD
14	TOP DEAD CENTER LASER SYSTEM

ADDITIONAL PARTS DRAWING

	Form Number	Description	BALANCERS
1	Form 12-28	BALANCER WHEEL LIFT (KIT 20-3101-1)	RFE1X, RFE3X

BASE ASSEMBLIES

	Part Number	Description	BALANCERS
1	72-604-1	BASE, RFT BALANCE, GEN5	RFE00, RFE01. RFE02, RFE03
2	72-604-1	BASE, RFT BALANCE, GEN5	RFE10, RFE11. RFE12, RFE13
3	72-630-1	BASE, RFT BALANCER SC	RFE20, RFE21. RFE22, RFE23
4	72-630-1	BASE, RFT BALANCER SC	RFE30, RFE31. RFE32, RFE33

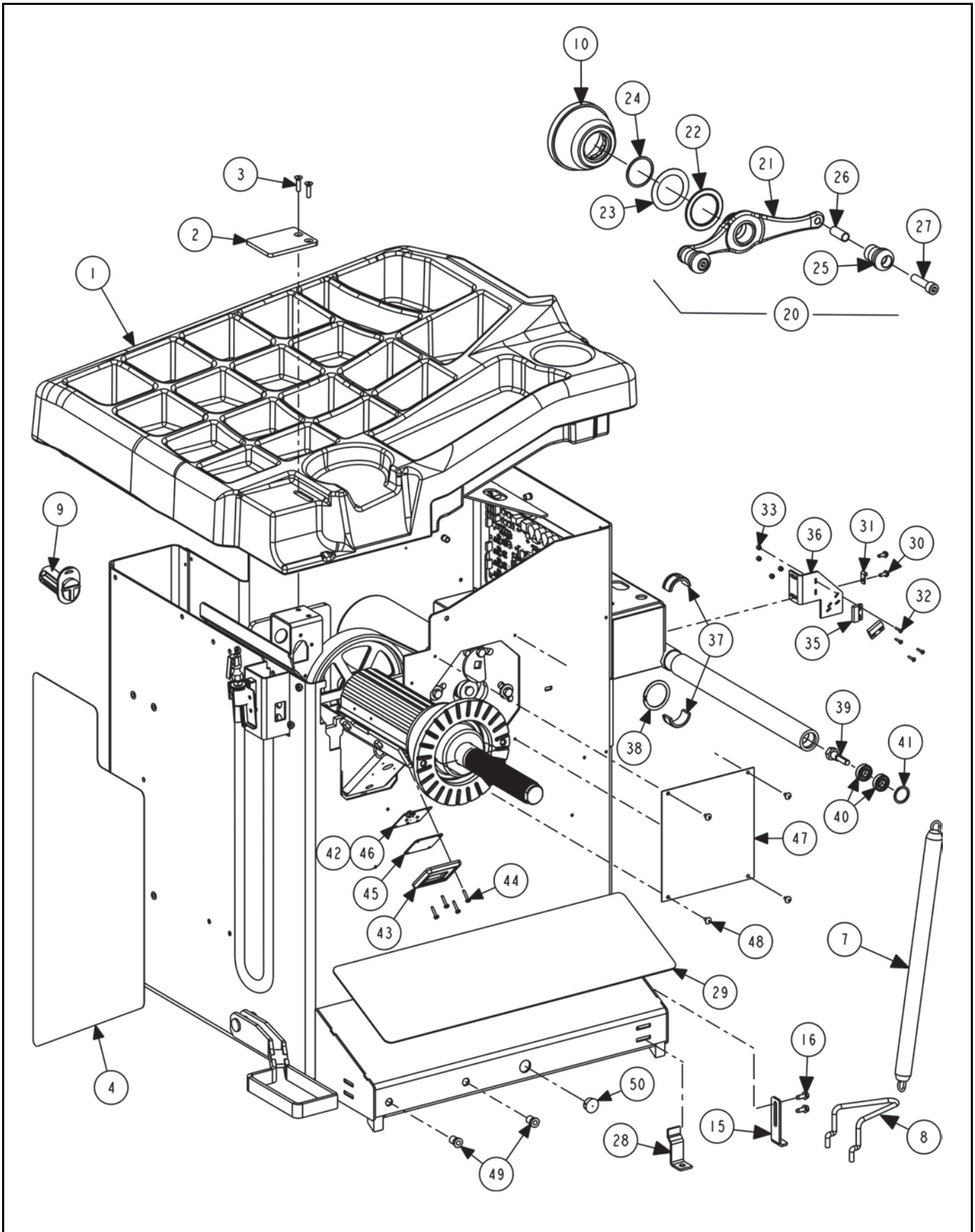


COLLET STORAGE AND PRINTER OPTION

REFER TO NEXT SHEET FOR PARTS DESCRIPTION LISTING

PARTS DESCRIPTION LISTING

Index No.	Part Number	Description	Qty.
1	base	BASE, RFT BALANCER	
2	14-1470-005	BRACKET, CONE SUPPORT	1
3	75-758-2	SOCKET BUTTON HEAD CAP SCREW 1/4-20 X .63 INCH	4
and	76-414-2	NUT-HEX INSERT 1/4-20	4
4	56-70-2	CARRIER, CONE, BALANCER FRONT LEFT-HAND	1
5	20-2711-1	KIT, GEN 4 BALANCER CENTERING (Standard on RFT) (Consisting Of:)	1
6	20-2683-1	KIT, P-3/4TON DUAL TAPER COLLET	1
7	192-213-1	CONE, 2.10-2.31, 2.26-2.47 (GREY / BLACK STRIPED)	1
8	192-214-1	CONE, 2.42-2.63, 2.58-2.79 (YELLOW / BLACK STRIPED)	1
9	192-215-1	CONE, 2.74-2.95, 2.89-3.11 (SMALL GREEN / BLACK STRIPED)	1
10	192-216-1	CONE, 3.05-3.27, 3.21-3.42 (SMALL BLUE / BLACK STRIPED)	1
11	192-217-1	CONE, 3.37-3.58, 3.53-3.74 (RED / BLACK STRIPED)	1
12	192-218-1	CONE, 3.69-3.90, 3.85-4.06 (ORANGE / BLACK STRIPED)	1
13	192-219-1	CONE, 4.01-4.22, 4.17-4.38 (LIGHT GREY / BLACK STRIPED)	1
14	192-220-1	CONE, 4.32-4.54, 4.48-4.70 (PURPLE / BLACK STRIPED)	1
15	192-221-1	CONE, 4.64-4.85, 4.80-5.01 (BIG GREEN / BLACK STRIPED)	1
16	192-222-1	CONE, 4.96-5.17, 5.12-5.33 (BIG BLUE / BLACK STRIPED)	1
17a	46-653-2	SPACER, 1.50 INCH WHEEL OFFSET MTG (Not Illustrated)	1
17b	175-392-1	ADAPTOR, BALANCER CUP WITH RETAINER 6 INCH	1
17c	106-157-2	SLEEVE, CLAMPING 6 INCH CUP	1
18	20-2680-1	KIT, BALANCER SOFTWARE (Not Illustrated)	1
19	20-1650-1	KIT, RIM TAGS (Not Illustrated)	1
20	20-2714-1	SHELF PRINTER, GEN 4 BALANCER (Optional) (Consisting Of:)	1
21	76-368-2	NUT, LOCK 1/4-20 NYLON INSERT	2
22	77-144-2	WASHER, FENDER 1/4 INCH	2
23	77-67-2	WASHER, FLAT 1/4 INCH	2
24	75-29-2	HEX HEAD CAP SCREW 1/4-20X.75 INCH	2
25	38-954-2	CABLE, USB 2.0 A/B 2 METER (Not Illustrated)	1
26	28-90-2	FASTENER, VELCRO 2 INCH HOOK SIDE (Not Illustrated)	1
27	28-89-2	FASTENER, VELCRO 2 INCH LOOP SIDE (Not Illustrated)	1
28	215-179-1	SHELF ASSEMBLY, PRINTER (Consisting Of:)	1
29	215-180-005	SHELF, PRINTER TOP	1
30	215-134-005	SHELF, PRINTER SUPPORT BALANCER	2
31	71-236-005	SIDE, PRINTER SHELF BALANCER	2
32	171-283-005	PANEL, REAR PRINTER SHELF	1
33	48-56-2	RIVET, BLIND 3/16 X 1/4 INCH	23
34	75-458-2	SCREW, SELF-TAPPING 10-16 X 1 INCH	2
35	38-1155-2	CABLE, IEC C13/C14 3 FEET (Not Illustrated)	1
36	38-911-2	CABLE, MONITOR POWER TO PC POWER (Not Illustrated)	1
37	128-1628-3	DECAL, RS BALANCER DOMESTIC (Not Illustrated)	1
OR	128-1678-3	DECAL-RFE BAL, EXPORT (Not Illustrated) (Not for USA or Canada)	1
38	128-603-2	DECAL, AIR PRESSURE LIMITS (Not Illustrated)	1
39	24-164-2	NAMEPLATE GSP9700 PATENT (Not Illustrated)	1
40	128-1419-3	DECAL, WHEEL BALANCER SAFETY (Not Illustrated)	1



TUB EXTERIOR COMPONENTS AND WING NUT

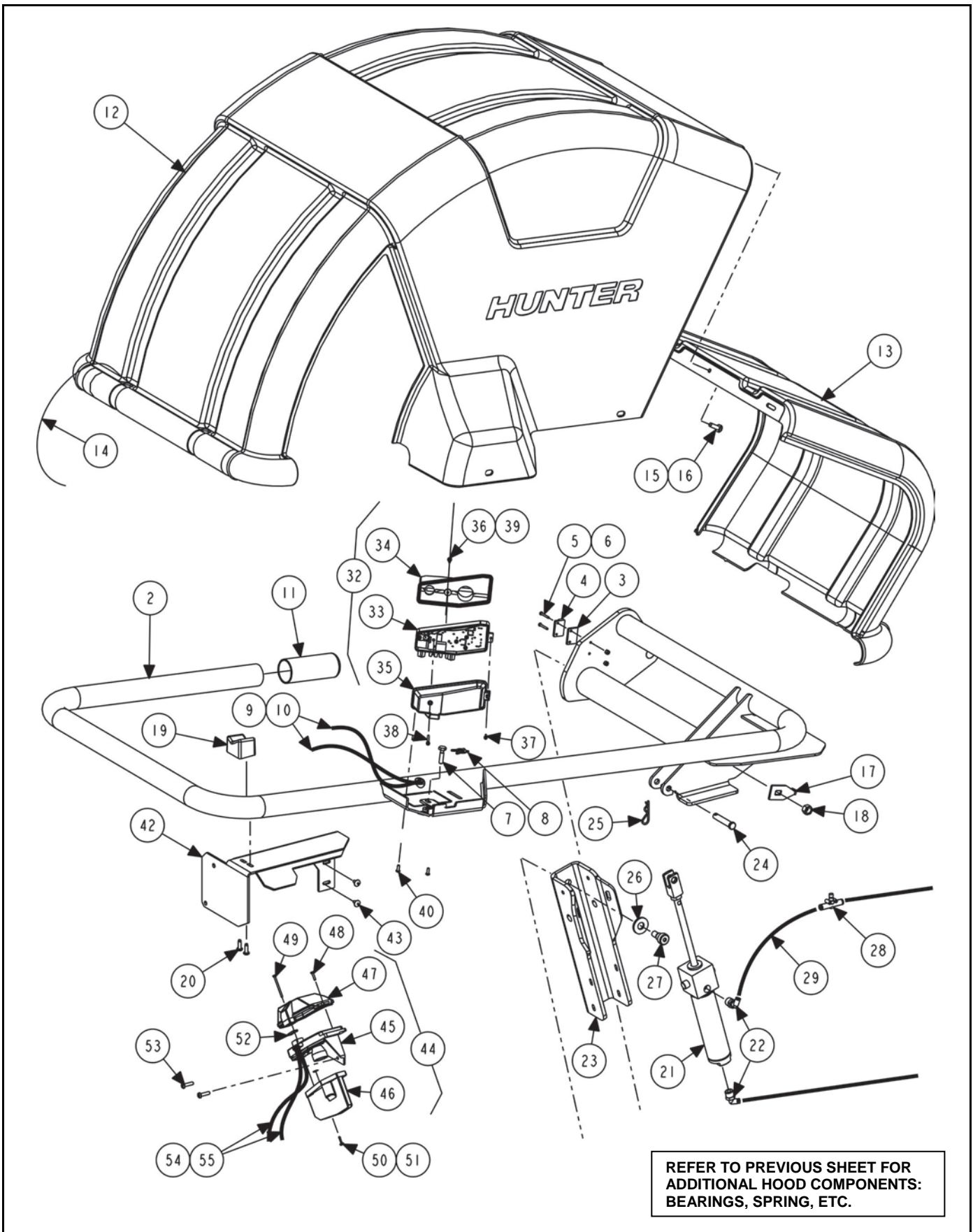
REFER TO NEXT SHEET FOR PARTS DESCRIPTION LISTING

PARTS DESCRIPTION LISTING

Index No.	Part Number	Description	Qty.
1	69-1559-2	COVER, WEIGHT TRAY TRIMMED	1
2	51-2168-2	PLATE, WEIGHT ANVIL 9200	1
3	75-68-2	FLAT HEAD SOCKET CAP SCREW 1/4-20 X .75 INCH	2
4	128-1639-2	DECAL, ROAD FORCE ELITE	1
5	20-2145-1	KIT, GSP BALANCER ACCESSORIES (Consists Of:)	1
6	65-72-2	WEIGHT, CALIBRATION (Not Illustrated)	1
7	98-303-2	SPRING, HOOD	1
8	216-43-2	HOOK, LOWER SPRING MOUNT, GSP BALANCER	1
9	233-44-2	POST, CONE HOOK PLASTIC	9
10	175-353-1	ADAPTOR, BALANCER CUP WITH RETAINER (Includes)	1
11	41-138-2	RETAINER-ROUND WIRE, 2.00 DIAMETER	1
12	46-320-2	SPACER, SPINDLE SHAFT (Not Illustrated)	1
13	106-82-2	SLEEVE, CLAMPING CUP (Not Illustrated)	1
14	223-68-1	RING, BALANCER PRESSURE WITH RETAINER (Not Illustrated)	1
15	14-1346-005	BRACKET, BALANCER LEG LONG	1
16	75-317-2	SCREW, THREAD ROLLING 1/4-20 X 5/8 INCH	2
17	221-589-2	TOOL, WEIGHT HAMMER / PLIERS (Not Illustrated)	1
18	221-658-2	TOOL, NYLON HAMMER HEAD (Not Illustrated)	1
19	221-659-2	TOOL, ADHESIVE WEIGHT REMOVER (Not Illustrated)	1
20	76-433-3	NUT, FORGED WINGNUT WITH HANDLES (Consists Of:)	1
21	76-426-2	NUT, FORGED WINGNUT	1
22	130-250-3*	BEARING WITH WASHER, NEEDLE 55 mm*	1
23	130-250-3*	BEARING WITH WASHER, NEEDLE 55 mm *	1
24	112-87-2	SNAP RING, SMALLEY WS-200	1
25	142-148-2	HANDLE, WINGNUT	2
26	106-154-2	SLEEVE, WINGNUT HANDLE	2
27	74-206-2	SOCKET HEAD CAP SCREW 1/2-13 X 2 INCH, (FULL-THREAD)	2
28	216-111-2	HOOK, FLOOR / SHIPPING HOLD DOWN	3
29	64-158-2	PAD, FOOT	1
30	75-413-2	SCREW, SELF-TAPPING 10-32 X .50 INCH	2
31	12-145-2	CLAMP, CABLE 1/4 INCH DIAMETER	1
32	75-584-2	TRUSS HEAD MACHINE SCREW 4-40 X 5/8 INCH	4
33	76-366-2	NUT, LOCK 4-40 NYLON INSERT	6
34	75-401-2	TRUSS HEAD SHEET METAL SCREW 10 X 1/2 INCH	8
35	18-497-1	SWITCH, REED SWITCH ASSEMBLY	2
36	14-1116	BRACKET, 9722 HOOD SWITCH	1
37	130-244-2	BEARING, WHEEL COVER	2
38	112-80-2	SNAP RING, EXTERNAL, 1.75 DIAMETER	1
39	74-590-2	SHOULDER SCREW, SPECIAL 1/2 INCH DIAMETER	1
40	130-172-2	BEARING, SEALED BALL	2
41	112-124-2	SNAP RING, INTERNAL 1.125 INCH	1
42	45-1403-1	PCA, WHEEL LIGHT XPE	1
43	69-1375-2	COVER, SPINDLE LED	1
44	75-801-2	SCREW, SELF-TAPPING 6-32 X 3/4 INCH	4
45	44-38-2	WINDOW, WHEEL ILLUMINATION	1
46	37-625-1	WIRE ASSEMBLY, SPINDLE LIGHT	1
47	69-1028-PPP	COVER, SPINDLE DRIVE MOTOR	1
48	75-401-2	TRUSS HEAD SHEET METAL SCREW 10 X 1/2 INCH	4
49	76-413-2	NUT, HEX INSERT 5/16-18	2
50	43-111-2	PLUG, 7/8 INCH DIAMETER HOLE	1

* Wingnut service item 130-250-3 contains needle thrust bearing and two thrust washers (only one washer is needed).





HOOD AND SMARTSCAN

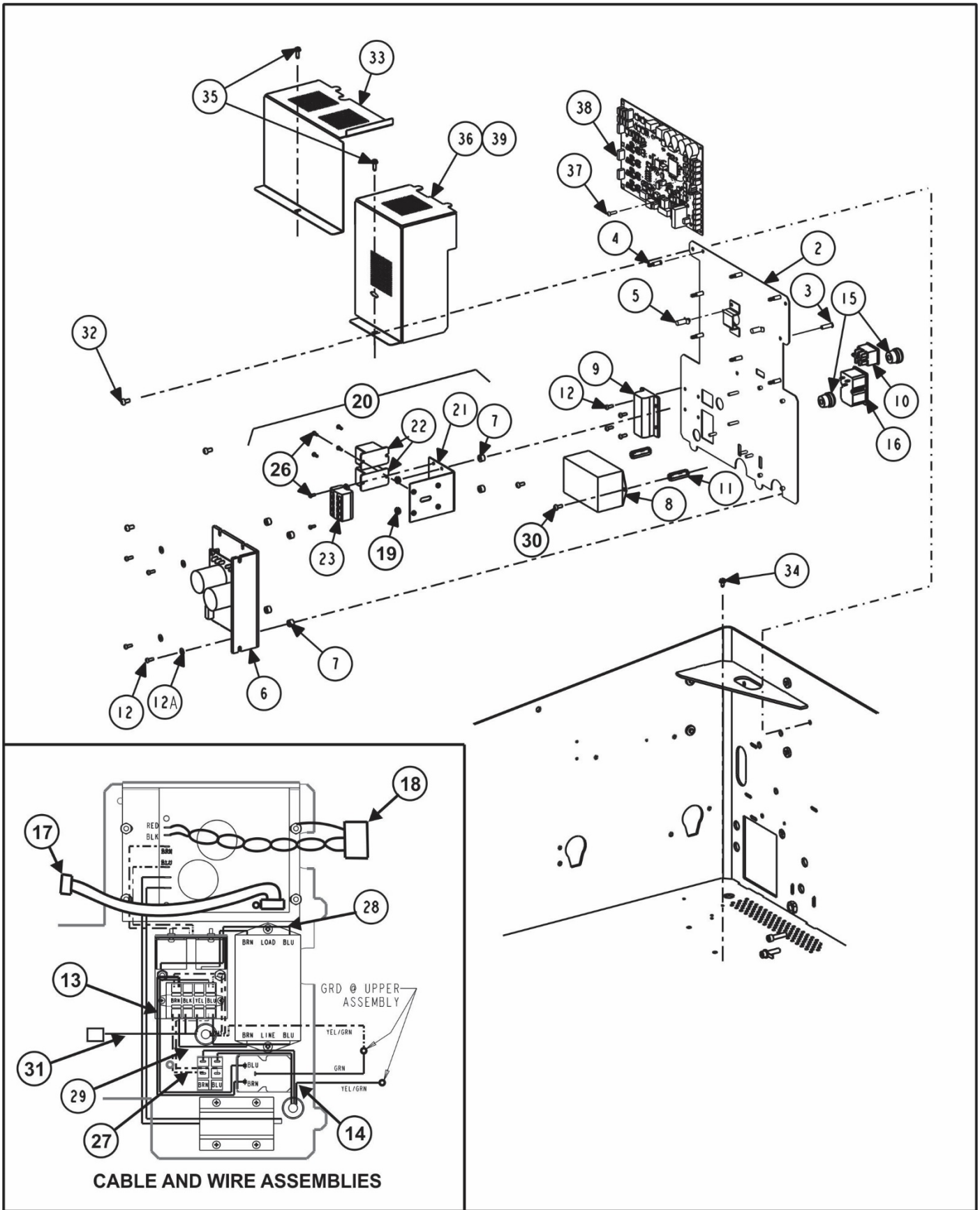
REFER TO NEXT SHEET FOR PARTS DESCRIPTION LISTING

PARTS DESCRIPTION LISTING

Form 12-30, 04-16d

Sheet 5 of 14

Index No.	Part Number	Description	Qty.
1	69-1567-1	COVER, GEN5 HOOD ASSEMBLY (Consisting Of:)	1
2	16-1115-1-005	TUBE ASSEMBLY, WHEEL COVER, RFT	1
3	46-445	SPACER, MAGNET	1
4	60-24-2	MAGNET, REED SWITCH ACTUATOR	1
5	75-199-2	ROUND HEAD MACHINE SCREW 4-40 X 7/8 INCH	2
6	76-366-2	NUT, LOCK 4-40 NYLON INSERT	2
7	75-865-2	SCREW, SPECIAL 1/4-20	1
8	112-173-2	RETAINING RING, SPLIT 3/16 INCH DIAMETER	1
9	38-1290-2	CABLE, USB 2.0 A/B 3 METER	1
10	38-1284-1	CABLE, ENCODER / OUTER CAMERA	1
11	53-221-2	CAP, VINYL 1.5 INCH ID X 4 INCH	1
12	69-1562-2	COVER, WHEEL, GEN5 BALANCER	1
13	69-1368-2	COVER, RR WHEEL WITH LOAD ROLLER	1
14	94-35-2	TIE-WIRE, 15 INCH X 1/2 INCH	7
15	75-128-2	PAN HEAD MACHINE SCREW 1/4-20 X 3/4 INCH	3
16	76-367-2	NUT, FLANGE 1/4-20	3
17	12-244-005	CLAMP, WHEEL COVER	1
18	76-26-2	NUT, HEX 3/8-16	1
19	228-94-2	STOP, HOOD FRONT	1
20	75-870-2	SCREW, SELF-TAPPING 10-14 X 5/8 INCH	2
21	140-116-2	CYLINDER, AIR, 1 1/2 INCH DIAMETER	1
22	145-492-2	FITTING, 1/4 INCH NPT, 5/32 INCH TUBE, 90	2
23	177-92-005	PIVOT, HOOD CYLINDER	1
24	135-590-2	PIN, CLEVIS 2 X 3/8 DIAMETER	1
25	135-424-2	PIN, HAIRPIN COTTER PIN-FOR	1
26	77-435-2	WASHER, FLAT .507 ID .118 INCH THICK	1
27	74-594-2	SCREW, SHOULDER .500 DIAMETER X .375 INCH	1
28	108-230-2	VALVE, 5/32 IN-LINE FLOW CONTROL	2
29	16-450-2	TUBE, AIR 5/32 INCH OD	18
30	94-17-2	TIE-WIRE SUPPORTS STICK ON	2
31	20-3162-1	KIT, RIM SCAN COMPONENTS	1
32	125-493-1	SENSOR, BALANCER OUTER CAMERA	1
33	125-496-1	SENSOR, BALANCER OUTER CAMERA SUB-ASSEMBLY	1
34	179-82-2	SHIELD, OUTER LASER	1
35	69-1554-2	COVER, OUTER LASER	1
36	75-863-2	CAPTIVE SCREW 4-40X0.5 INCH	1
37	75-861-2	PAN HEAD MACHINE SCREW 4-40 X 1/2 INCH	1
38	75-862-2	PAN HEAD MACHINE SCREW 4-40X1 1/2 INCH	1
39	112-174-2	RETAINING RING, E STYLE 7/64	1
40	75-24-2	ROUND HEAD MACHINE SCREW 6-32 X .38 INCH	2
41	94-50-2	TIE-WIRE 15 INCH X .298 INCH	1
42	14-1629	BRACKET, SUPPORT / SHIELD	1
43	75-401-2	TRUSS HEAD SHEET METAL SCREW 10 X 1/2 INCH	2
44	125-492-1	SENSOR, BALANCER INNER CAMERA	1
45	125-495-1	SENSOR, BAL INNER CAMERA SUB-ASSEMBLY	1
46	179-81-2	SHIELD, INNER LASER	1
47	69-1526-2	COVER, INNER LASER HOUSING	1
48	75-861-2	PAN HEAD MACHINE SCREW 4-40 X 1/2 INCH	1
49	75-862-2	PAN HEAD MACHINE SCREW 4-40 X 1 1/2 INCH	1
50	75-863-2	CAPTIVE SCREW 4-40 X 0.5 INCH	1
51	112-174-2	RETAINING RING, E STYLE 7/64	1
52	49-88-2	GASKET, CABLE SEAL	1
53	75-671-2	SOCKET BUTTON HEAD CAP SCREW 10-32 X 3/4 INCH	2
54	38-1283-1	CABLE, ENCODER/INNER CAMERA	1
55	38-954-2	CABLE, USB 2.0 A/B 2 METER	1

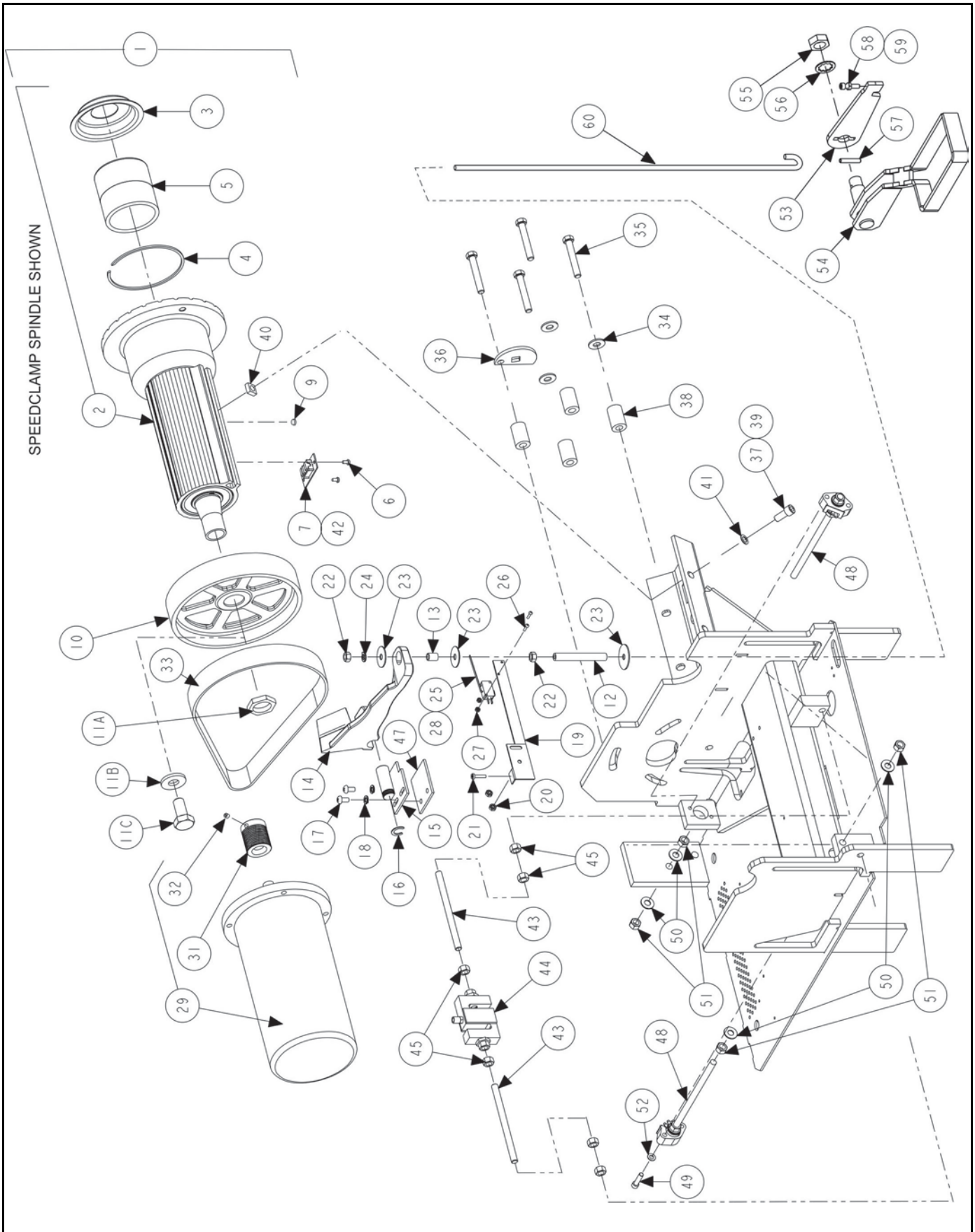


ELECTRIC PANEL

REFER TO NEXT SHEET FOR PARTS DESCRIPTION LISTING

PARTS DESCRIPTION LISTING

Index No.	Part Number	Description	Qty.
1	232-300-1	ELECTRIC PANEL, GEN5 BALANCER (Consisting Of:)	1
2	51-2929-1	PLATE ASSEMBLY, ELECTRONICS, GEN4 (Includes:)	1
3	46-750-2	SPACER, PRESS IN 6-32 X .75 INCH LONG	1
4	46-749-2	SPACER, SNAP TOP STANDOFF, .75	7
5	46-751-2	SPACER-NYLON PUSH IN .63 INCH HIGH	2
6	232-205-2	DC MOTOR DRIVE, 230V/8A	1
7	46-704-2	SPACER #8 X .25 INCH LONG	4
8	136-108-2	FILTER, POWER LINE RFI	1
9	81-82-1	RESISTOR ASSEMBLY, 75 OHM WITH LEADS	1
10	18-270-2	SWITCH, DOUBLE PULL SINGLE THROW ROCKER	1
11	46-705-2	STANDOFF, 3/8 HEX, 8-32 X 1-1/4 INCH	2
12	75-24-2	ROUND HEAD MACHINE SCREW 6-32 X .38 INCH	8
12A	77-12-2	WASHER, LOCK #6 INTERNAL LOCK	4
13	38-1215-2	POWER CORD, SPLIT IEC	1
14	38-845-1	CABLE ASSEMBLY, POWER GSP9700	1
15	59-62-2	STRAIN RELIEF, HEYCO #1244	2
16	36-67-1	RECEPTACLE ASSEMBLY, GEN4 BAL	1
17	38-1148-1	CABLE ASSEMBLY, MOTOR CONTROL	1
18	37-628-1	WIRE ASSEMBLY, MOTOR	1
19	76-71-2	NUT-KEPS 8-32	2
20	232-277-1*	ELECTRIC ASSEMBLY-BALANCER, RELAY (Consisting Of:)	1
21	14-1507-1	BRACKET ASSEMBLY, BALANCER RELAY	1
22	18-571-2	RELAY, BALANCER DC DRIVE	2
23	19-282-2	TERMINAL STRIP, 4 COND, 4 POLE	1
24	37-477-1	WIRE ASSEMBLY, 9700 POWER SWITCH (Not Illustrated)	1
25	37-656-1	WIRE ASSEMBLY, BALANCER RELAY POWER SPLIT (Not Illustrated)	1
26	75-171-2	ROUND HEAD MACHINE SCREW 4-40 X 5/16 INCH	6
27	37-652-1	WIRE ASSEMBLY, GEN4 BALANCER POWER SWITCH	1
28	37-633-1	WIRE ASSEMBLY, BALANCER RELAY TO DRIVE	1
29	37-657-1	WIRE ASSEMBLY, BALANCER TERMINAL TO FILTER	1
30	75-32-2	ROUND HEAD MACHINE SCREW 8-32 X 3/8 INCH	2
31	37-694-1	WIRE ASSEMBLY, GEN5 BALANCER RELAY POWER	1
32	75-802-2	SCREW, SELF-TAPPING 10-32 X 3/8 INCH	4
33	69-1558	COVER, ELECTRONICS, LEFT-HAND	1
34	75-682-2	SCREW, SELF-TAPPING 8-32 X 5/16 INCH GREEN	1
35	75-327-2	SCREW, SELF-TAPPING 8-32 X 1/2 INCH	2
36	69-1564	COVER, ELECTRONICS, RIGHT-HAND	1
37	75-49-2	ROUND HEAD MACHINE SCREW 6-32 X 1/2 INCH	1
38	45-1513-1	PCA, BALANCER DAQ-USB	1
and	21-204-2	CONNECTOR .1 2 CIRCUIT JUMPER (S3) (Not Shown)	1
39	113-258-2	BUSHING, PUSH ON TRIM	1.25 in



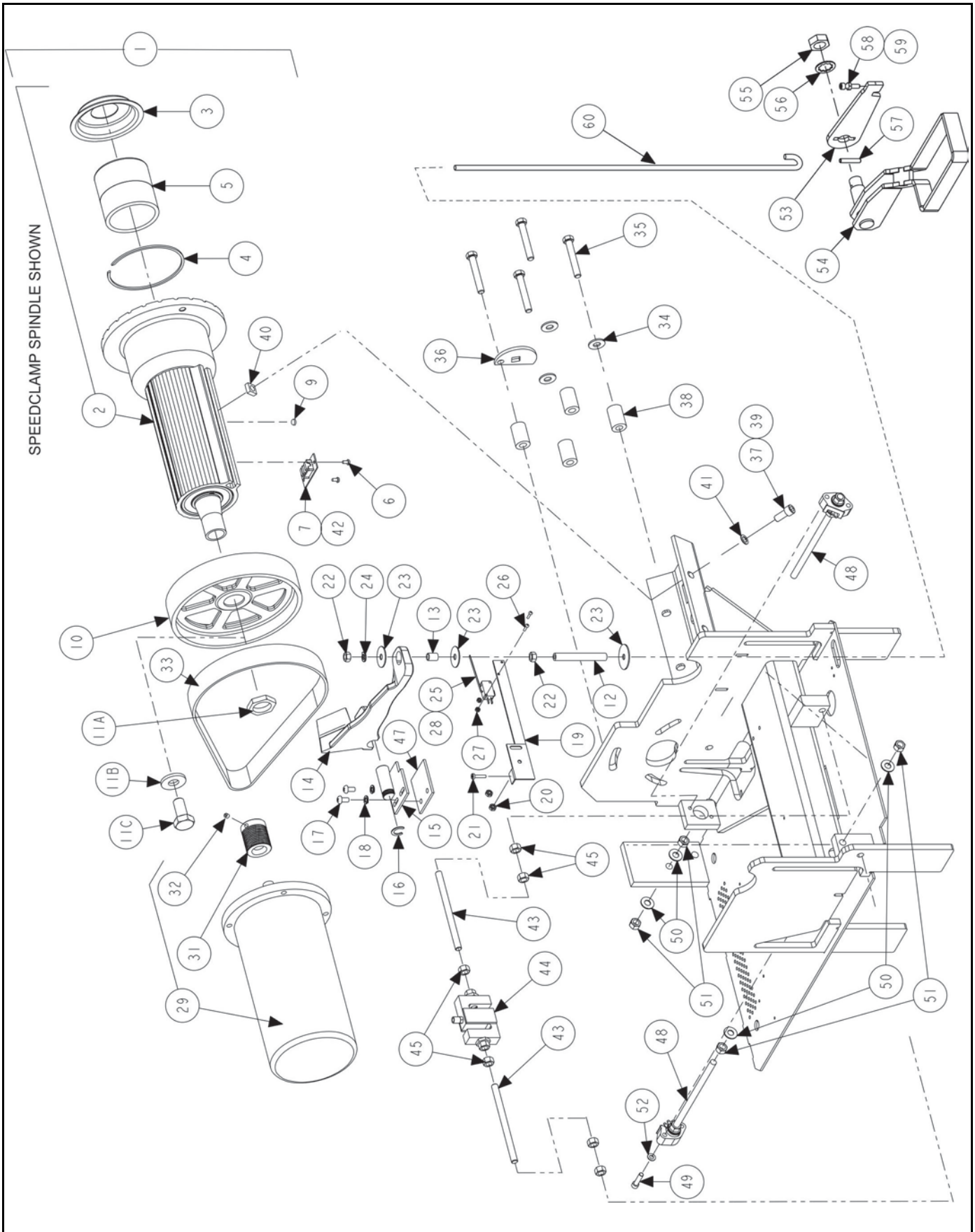
VIBRATION STRUCTURE

REFER TO NEXT SHEET FOR PARTS DESCRIPTION LISTING

PARTS DESCRIPTION LISTING

Index No.	Part Number	Description	Qty.
1	105-689-1	HOUSING, SPINDLE W/ DIFF ENCODER (For Speed-Clamp) (Consists Of:)	1
OR	105-677-1	HOUSING, SHAFT W/ DIFF ENC (NOT For Speed-Clamp) (Not Ill.) (Cons. Of:)	1
AND	97-531-2*	SHAFT-THREADED, REMOVABLE (export only) (Not Illustrated)	1
2	105-486-1	HOUSING, SPINDLE / DRIVE ASSEMBLY (For Speed-Clamp) (Includes:)	1
OR	105-541-1	HOUSING, SOLID SHAFT (NOT For Speed-Clamp) (Not Illustrated) (Includes:)	1
3	41-221-2	RETAINER, SPRING COVER	1
4	112-112-2	SNAP RING, INTERNAL 115 mm	1
5	98-381-2	SPRING, CONE	1
6	75-152-2	PAN HEAD MACHINE SCREW 8-32 X 5/16 INCH	2
7	45-1531-1	PCB, SPINDLE ENCODER DIFF OUT	1
8	53-155-2	PLUG, PLASTIC FOR 5/8 INCH HOLE	1
10	107-133-2	PULLEY, DRIVEN 14 RIB	1
11A	76-470-2	NUT, AUTOCLAMP PULLEY NUT (For Speed-Clamp)	1
11B	77-239-2	WASHER, FLAT 5/8 INCH SPECIAL (NOT For Speed-Clamp)	1
11C	74-365-2	HEX HEAD CAP SCREW M16-2X35 mm GRADE 8.8 (NOT For Speed-Clamp)	1
12	98-416-2	SPRING, BRAKE RELEASE	1
13	106-155-2	SLEEVE, BRAKE ISOLATOR	1
14	164-124-1	LEVER, SPINDLE BRAKE ASSEMBLY, WIDE	1
15	177-67-1-005	PIVOT, SPINDLE BRAKE ASSEMBLY	1
16	112-21-2	SNAP RING-#5103-75	1
17	75-177-2	ROUND HEAD MACHINE SCREW 1/4 - 20 X .88 INCH	2
18	77-71-2	WASHER, LOCK 1/4 INCH HELICAL SPRING	2
19	14-1132	BRACKET, FOOTBRAKE SWITCH	1
20	76-61-2	NUT, KEPS 10-32	2
21	75-414-2	PAN HEAD MACHINE SCREW 8-32 X 3/4 INCH	1
22	76-37-2	NUT, HEX 5/16-18	2
23	77-180-2	WASHER, FENDER 5/16 INCH	3
24	77-60-2	WASHER, LOCK 5/16 INCH HELICAL SPRING	1
25	18-454-2	SWITCH, MINI SINGLE-PULL DOUBLE-THROW 2.93 INCH LEVER	1
26	75-75-2	ROUND HEAD MACHINE SCREW 4-40 X 5/8 INCH	2
27	76-366-2	NUT, KEPS 4-40	2
28	38-1026-1	CABLE ASSEMBLY, SPINDLE LOC	1

* Use Shaft, 97-531-2, and Housing, 105-689-1 together for non-speed-clamp export models



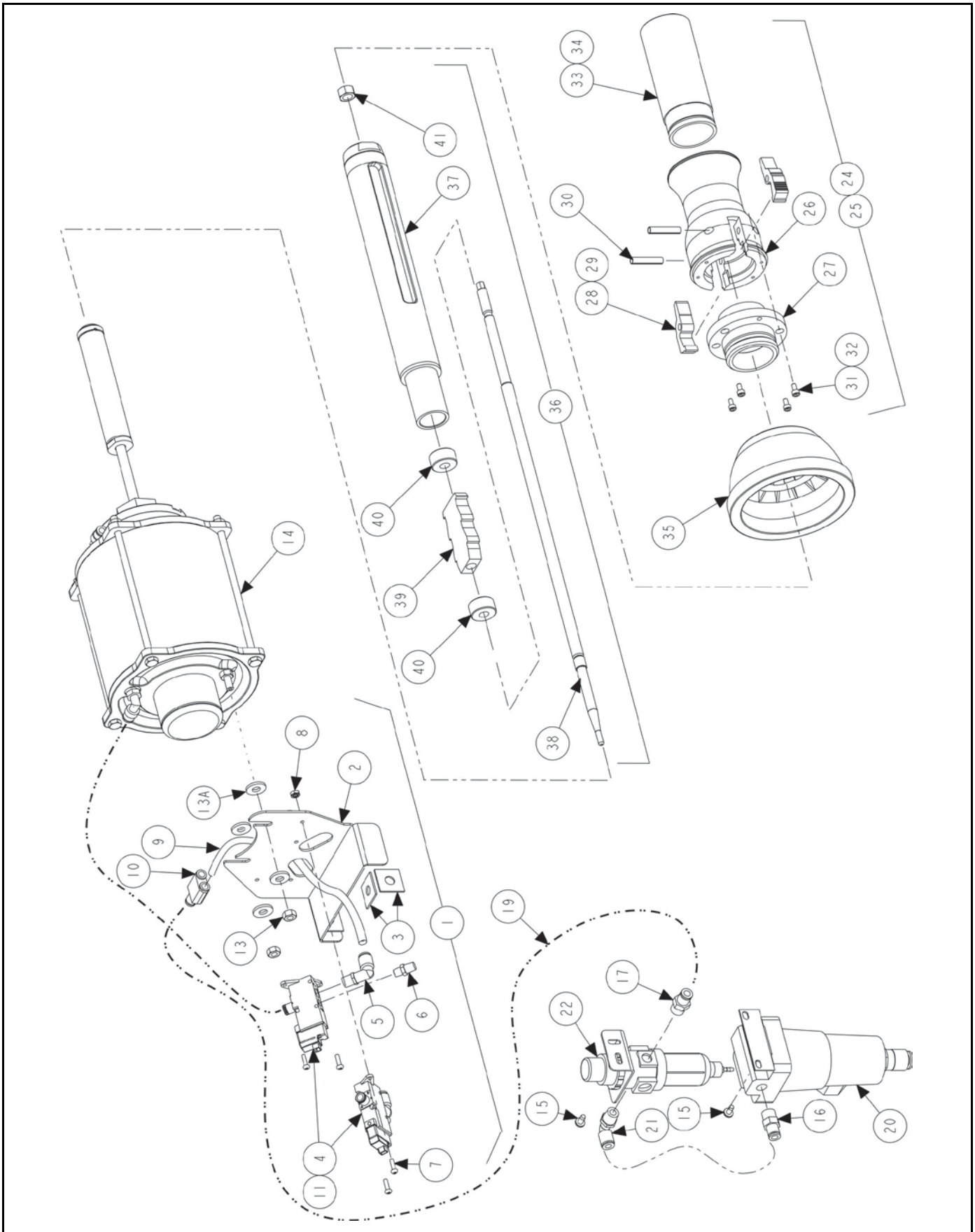
VIBRATION STRUCTURE (continued)

REFER TO NEXT SHEET FOR PARTS DESCRIPTION LISTING

PARTS DESCRIPTION LISTING

Index No.	Part Number	Description	Qty.
29	129-270-1	MOTOR ASSEMBLY, DC, RS BALANCER (Includes:)	1
30	55-18-2	CORE, FERRITE (CYLINDRICAL) (Not Illustrated)	1
31	107-134-2	PULLEY, DRIVE, 14 GROOVE	1
32	75-66-2	SOCKET SET SCREW 1/4-20 X 1/4 INCH CUP POINT	2
33	126-50-2	BELT, POLY-V DRIVE, 14 RIB	1
34	77-66-2	WASHER, FLAT 3/8 TYPE A-W	3
35	74-207-2	HEX HEAD CAP SCREW 3/8-16 X 3 INCH	4
36	172-34-2	CAM, BELT TENSIONER	1
37	FIELD PURCHASE	ADHESIVE, THREAD LOCKING (LOCKTITE 222)	A/R
38	46-422-2	SPACER, MOTOR	4
39	74-59-2	HEX HEAD CAP SCREW, 3/8-16 X .75 INCH (FULL-THREAD)	4
40	76-428-2	NUT, 3/8-16, .615 INCH SQUARE X .25 INCH	4
41	77-297-2	WASHER, FLAT 3/8 INCH	4
42	38-1265-1	CABLE ASSEMBLY, SPINDLE ENCODER DIFF	1
43	63-256-2	ROD, THREADED 3/8-24 X 5.5 INCH	2
44	109-100-1	TRANSDUCER, 500# S-CELL WITH CONNECTIONS	1
45	76-485-2	NUT, HEX 3/8-24 GRADE 8	6
46	FIELD PURCHASE	ADHESIVE, MEDIUM THREAD LOCKING (LOCKTITE 242)	A/R
47	46-686-005	SPACER, BRAKE PIVOT - A	1
48	109-155-1	TRANSDUCER ASSEMBLY, GEN IV BALANCER	2
49	75-239-2	SOCKET HEAD CAP SCREW 1/4-20 X 1.00 INCH (FULL-THREAD)	4
50	77-373-2	WASHER, FLAT 3/8 INCH, GRADE 8	4
51	76-485-2	NUT, HEX 3/8-24, GRADE 8	4
52	77-381-2	WASHER, .26 ID x .49 OD x .035 INCH	2
53	177-90-1-005	PIVOT, BRAKE WELDMENT	1
54	164-119-005	LEVER, BRAKE	1
55	76-108-2	NUT, JAM 3/4-16	1
56	77-50-2	WASHER-LOCK 3/4 INCH INTERNAL TOOTH	1
57	135-436-2	PIN-DOWEL 1/4 X 1 3/8 INCH HARDENED	1
58	75-239-2	SOCKET HEAD CAP SCREW 1/4-20 X 1.00 INCH (Full-Thread)	1
59	76-51-2	NUT, JAM 1/4-20	1
60	63-295-2	ROD, BRAKE ACTUATOR SHORT	1

Items 1 – 28 are located on previous sheet.



SPEEDCLAMP FEATURE

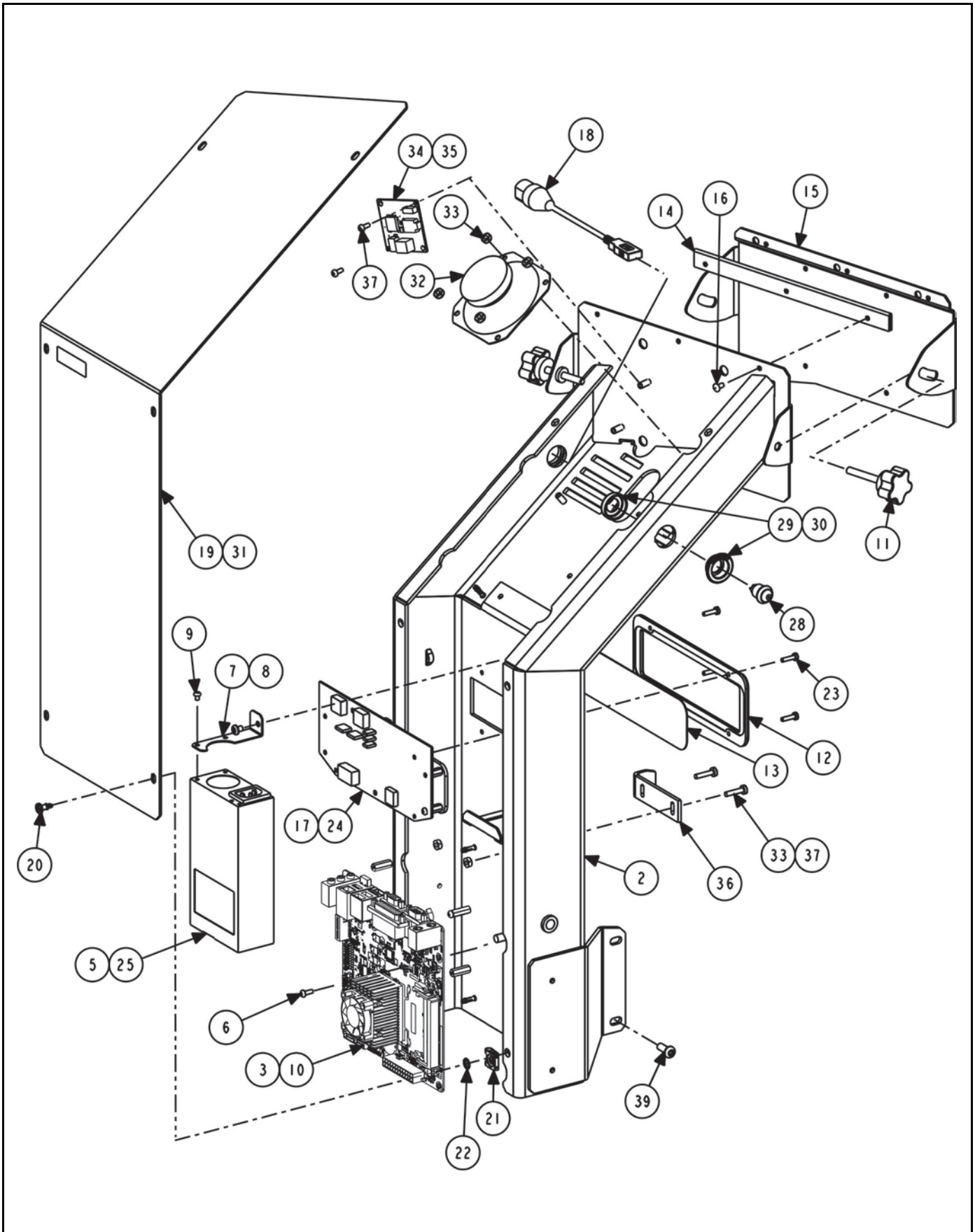
REFER TO NEXT SHEET FOR PARTS DESCRIPTION LISTING

PARTS DESCRIPTION LISTING

Index No.	Part Number	Description	Qty.
1	14-1659-1	BRACKET, ASSEMBLY, SPEEDCLAMP RFT VALVE (Consisting Of:)	1
2	14-1640-005*	BRACKET, ANTI ROTATE SPEEDCLAMP	1
3	49-84-2*	GASKET-TC REAR PANEL	4
4	108-198-2	VALVE-PNEUMATIC SOLENOID	2
5	145-358-2*	FITTING, 1/8 INCH NPT - 1/4 INCH PTC ELBOW	2
6	145-503-2*	FITTING, 1/16 INCH NPT EXHAUST SILENCER	2
7	75-49-2	ROUND HEAD MACHINE SCREW 6-32 X 1/2 INCH	4
8	76-84-2	NUT-KEPS 6-32	4
9	16-843-2	TUBE, 1/4 INCH HOSE, FLEXIBLE	33.25 in
10	145-325-2	FITTING, 1/4 INCH Y	1
11	38-1094-1	CABLE, MANIFOLD ASSEMBLY	2
12	94-31-2	TIE-CABLE (BLU) (Not Illustrated)	3
13	76-368-2	NUT, LOCK 1/4-20 NYLON INSERT	2
13A	77-67-2	WASHER-FLAT 1/4 INCH	4
14	20-3176-1*	KIT, RP-SPEEDCLAMP (Cylinder ONLY available as complete RP kit.)*	1
15	75-522-2	SCREW, SELF TAPPING 10-32 X .38 INCH	2
16	145-273-2	FITTING, 1/4 INCH HOSE X 1/4 NPT	1
17	145-324-2	FITTING, 1/8 NPT TO 1/4 INCH TUBE, 90	1
18	145-281-2	FITTING, 1/4 INCH HOSE X 1/8 NPT (Not Illustrated)	2
19	16-843-2	TUBE, 1/4 INCH HOSE, FLEXIBLE	33.5 in.
20	136-94-2	FILTER / REGULATOR, GSP AUTOCLAMP	1
21	145-350-2	FITTING, 1/4 TUBE-1/4 NPT 90 ELBOW	1
22	136-78-2	FILTER / REGULATOR, GSP9700 (supplied with ro1ler)	REF.
23	137-96-1	HOSE ASSEMBLY, PNEUMATIC SUPPLY (Not Illustrated)	REF.
24	20-3195-1	KIT, HUB ASSEMBLY, SPEEDCLAMP (Consisting Of:)	1
OR	20-3196-1	KIT, HUB ASSEMBLY, SPEEDCLAMP – EXPORT (Consisting Of:)	1
25	184-106-1	HUB ASSEMBLY, SPEEDCLAMP (Consists Of:)	1
26	184-105-2	HUB, SPEEDCLAMP CUP	1
27	217-61-2	COLLAR, AUTO-CLAMP CUP	1
28	144-105-2	LINK, PAWL AUTO-CLAMP	2
29	98-422-2	SPRING, TORSION AUTO-CLAMP	2
30	135-121-2	PIN, ROLL 1/4 INCH X 1 1/4 INCH	2
31	75-306-2	SOCKET HEAD CAP SCREW 8-32 X .31 INCH	4
32	Field purchase	LOCTITE # 271 OR PERMA BOND # HM128	A/R
33	106-156-2	SLEEVE, CLAMP (Export Only)	1
34	124-165-2	SEAL, O RING AS568A-030 (Export Only)	1
35	175-353-1	ADAPTOR, BALANCER CUP WITH RETAINER	REF
36	97-587-1	SHAFT ASSEMBLY, OUTER 40 mm AUTO-CLAMP (Consists Of:)	1
37	97-586-2	SHAFT, OUTER AUTO-CLAMP	1
38	97-585-2	SHAFT, OUTER WITH HEX	1
39	99-132-2	RATCHET, AUTO-CLAMP	1
40	113-280-2	BUSHING, OUTER SHAFT	2
41	76-458-2	NUT, GRIP 3/8-24	1

* Kit 20-3176-1 (Replacement Part - SpeedClamp Kit) contains identified items and instructions, Form 7076-T.





TOUCH SCREEN SUPPORT

REFER TO NEXT SHEET FOR PARTS DESCRIPTION LISTING

PARTS DESCRIPTION LISTING

Index No.	Part Number	Description	RFE Qty.
1	11-1659-1	SUPPORT ASSEMBLY, TOUCH DISPLAY, RS (Consisting Of:)	1
2	11-1434-1-005	SUPPORT ASSEMBLY, TOUCH DISPLAY, GEN4 (RFT)	1
3	45-1545-2	PCB-J1900 MINI-ITX MOTHERBOARD (INCLUDE 45-1547-2 RAM)	1
5	232-253-2	FLEX ATX 150 WATT POWER SUPPLY	1
6	75-24-2	ROUND HEAD MACHINE SCREW 6-32 X .38 INCH	3
7	14-1307	BRACKET, FLEX ATX	1
8	75-582-2	SOCKET BUTTON HEAD CAP SCREW 10-32 X .25 INCH	1
9	75-332-2	ROUND HEAD MACHINE SCREW 6-32 X 3/16 INCH	2
10	46-579-2	SPACER, NYLON PUSH IN .437 INCH HIGH	1
11	34-208-2	KNOB, 1/4-20 X 1/2 INCH	2
12	223-82-2	RING, TRIM, NAMEPLATE	1
13	24-178-2	NAMEPLATE, RFT BALANCER (HUNTER)	1
14	160-56-2	HINGE, MONITOR, TOUCH	1
15	51-2587-005	PLATE, MONITOR, HINGED	1
16	48-103-2	RIVET, BLIND 5/32 X 1/4 INCH, BLACK	6
17	190-193-1	SIGN, LIGHTED, DISPLAY SUPPORT (Assembly of PCA and clear window)	1
OR	45-1353-1-2	PCA, DISPLAY SUPPORT SIGN BALANCER (LED Circuit Board Only)	1
18	38-1082-2	CABLE ASSEMBLY USB BULKHEAD	1
19	69-1372-005	COVER, DISPLAY SUPPORT, TOUCH	1
20	75-775-2	SCREW, QUARTER TURN, SIZE 280, PR	6
21	76-490-2	NUT, QUARTER TURN, CLIP-ON	6
22	41-205-2	RETAIN, QUARTER TURN, 82 SERIES	6
23	75-735-2	PAN HEAD MACHINE SCREW 6-32 X 5/16 INCH	4
24	38-1185-2	CABLE, 5 PIN USB HDR F/F 24 INCH (TO USB ON ITEM 3)	3
25	38-1289-2	CABLE, 4 PIN MOLEX EXTENSION, 24 INCH	1
27	94-45-2	TIE, CABLE (BLACK) (Not Illustrated)	2
28	18-565-2	SWITCH ASSEMBLY, BALANCER MOTHER BOARD POWER	1
29	105-639-2	HOUSING, POWER BUTTON, OUTER	1
30	105-640-2	HOUSING-POWER BUTTON, INNER	1
31	128-1399-2	DECAL, DISPLAY COVER GEN IV	1
32	109-173-1	SPEAKER, ASSEMBLY 3.5 INCH WITH CABLE	1
33	76-71-2	NUT-KEPS 8-32	6
34	45-1451-1	MONO AUDIO AMP	1
35	37-653-1	WIRE ASSEMBLY, TIRE CHANGER AUDIO AMP POWER	1
36	216-118-005	HOOK, WEIGHT TRAY	1
37	75-414-2	PAN HEAD MACHINE SCREW 8-32X3/4 INCH	2
39	75-758-2	SOCKET BUTTON HEAD CAP SCREW 1/4-20 X .63 INCH	4
AND	76-414-2	NUT-HEX INSERT 1/4-20	4
40	227-105-2	DISPLAY, 22 INCH LCD WITH TOUCH (Not Illustrated)	1
41	75-668-2	PAN HEAD MACHINE SCREW M4 X .7 X 10 mm (Not Illustrated)	2

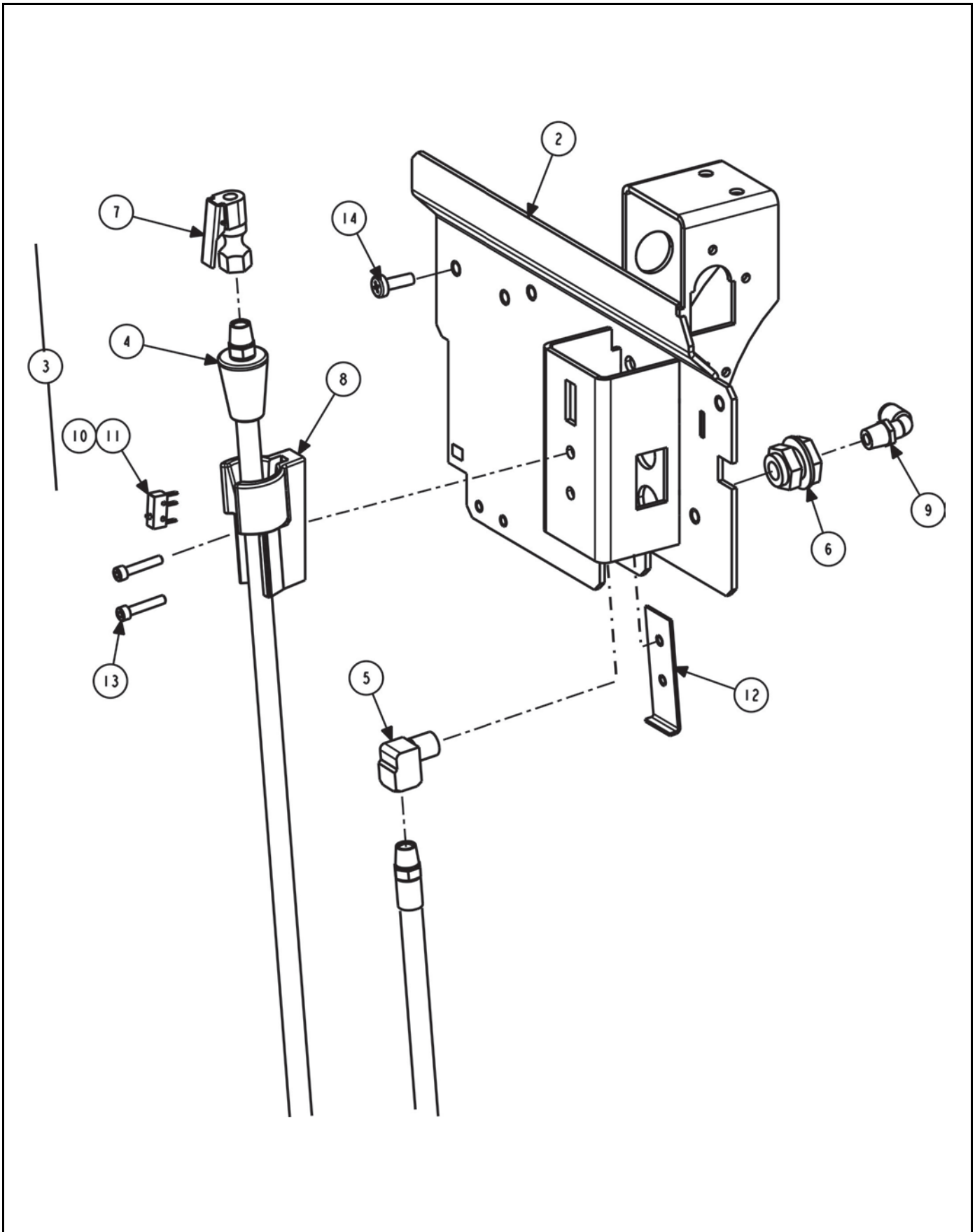
** Customized signs are available for some OEMs and national accounts. Part numbers and description of signs are listed below:

24-182-2	KIA	24-194-2	ACURA CANADA	24-203-2	MOPAR
24-183-2	SUBARU	24-195-2	HONDA CANADA	24-204-2	ACURA DOMESTIC
24-184-2	HYUNDAI	24-196-2	ROTUNDA	24-205-2	HONDA DOMESTIC
24-187-2	BMW	24-197-2	BELLE TIRE	24-213-2	TIRECRAFT
24-188-2	JLR (Jaguar-Land Rover)	24-199-2	LEXUS	24-214-2	PORSCHE CANADA
24-189-2	MERCEDES-BENZ	24-200-2	TOYOTA	24-219-2	SENTURY
24-191-2	GM	24-201-2	NISSAN TM	24-220-2	GSP97MB
24-193-2	VAG	24-202-2	INFINITI TM		



11250 HUNTER DRIVE BRIDGETON, MO 63044

PPP-Paint Code Required
A/R-As Required
REF-Reference

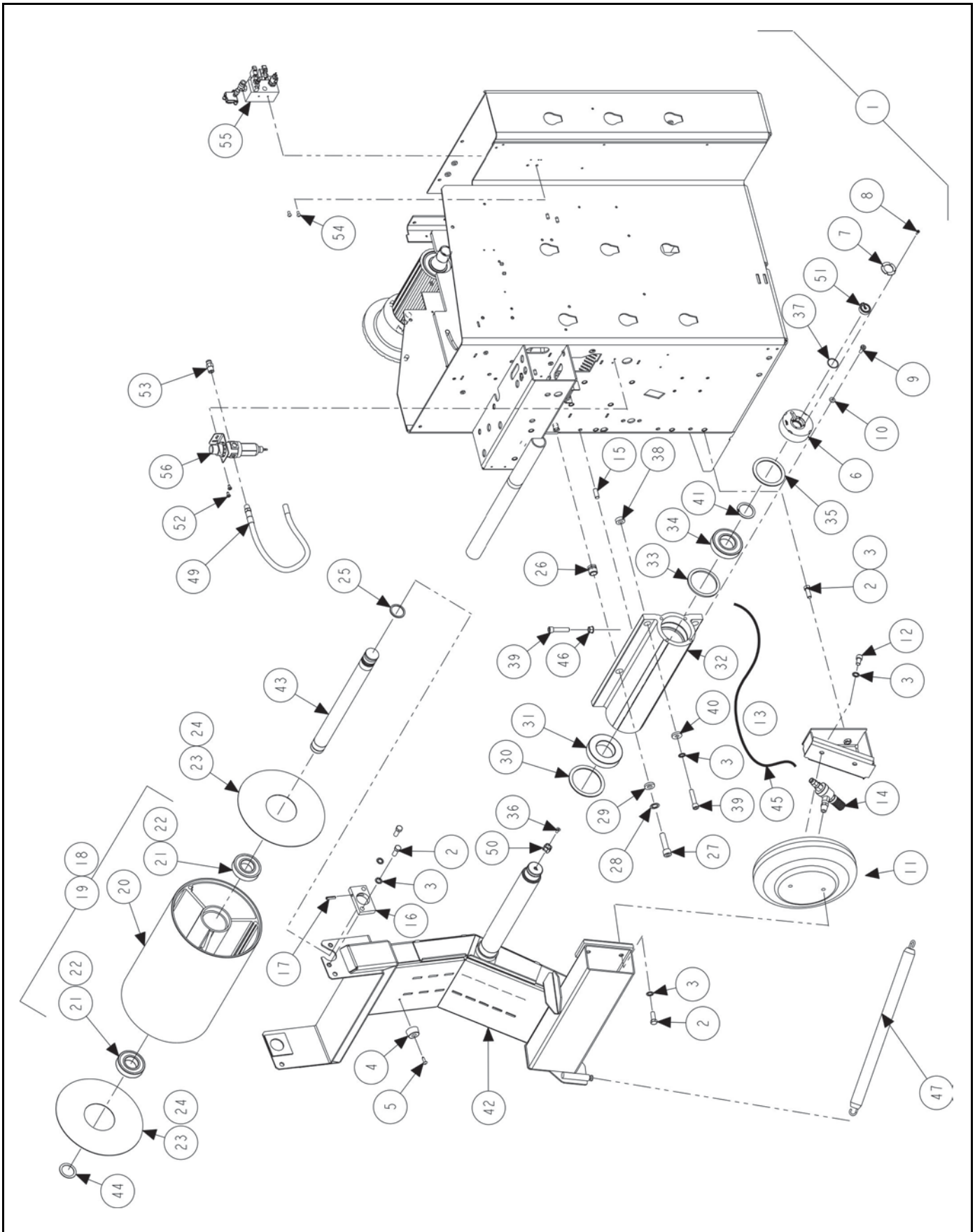


INFLATION SUPPORT ASSEMBLY, 11-1633-1

REFER TO NEXT SHEET FOR PARTS DESCRIPTION LISTING

PARTS DESCRIPTION LISTING

Index No.	Part Number	Description	Qty.
1	11-1633-1	SUPPORT ASSEMBLY, INFLATION (Consists Of:)	1
2	11-1632-1-005	SUPPORT ASSEMBLY, INFLATION	1
3	105-648-1	HOUSING ASSEMBLY, BALANCER TIRE FILL (Consists Of:)	1
4	137-149-1	HOSE ASSEMBLY, BALANCER TIRE FILL (Includes)	1
5	145-241-2	FITTING, 1/4 BRASS STREET ELBOW	1
6	145-224-2	COUPLING, BULKHEAD	1
7	145-341-2	FITTING, AIR CHUCK LOCK-ON OPEN	1
8	105-645-1	HOUSING, TC INFLATION HOLSTER	1
9	145-350-2	FITTING, 1/4 INCH TUBE-1/4 INCH NPT 90 ELBOW	1
10	18-350-2	SWITCH, SUBMINIATURE LIMIT (included with holster (item 39))	REF
11	37-481-1	WIRE ASSEMBLY-GSP9700 TIRE FILL	1
12	14-1514-1	BRACKET ASSEMBLY-INFLATION MOUNT	1
13	75-436-2	SOCKET HEAD CAP SCREW 10-32 X 1.00 INCH (FULL-THREAD)	2
14	75-128-2	PAN HEAD MACHINE SCREW 1/4-20 X 3/4 INCH	4

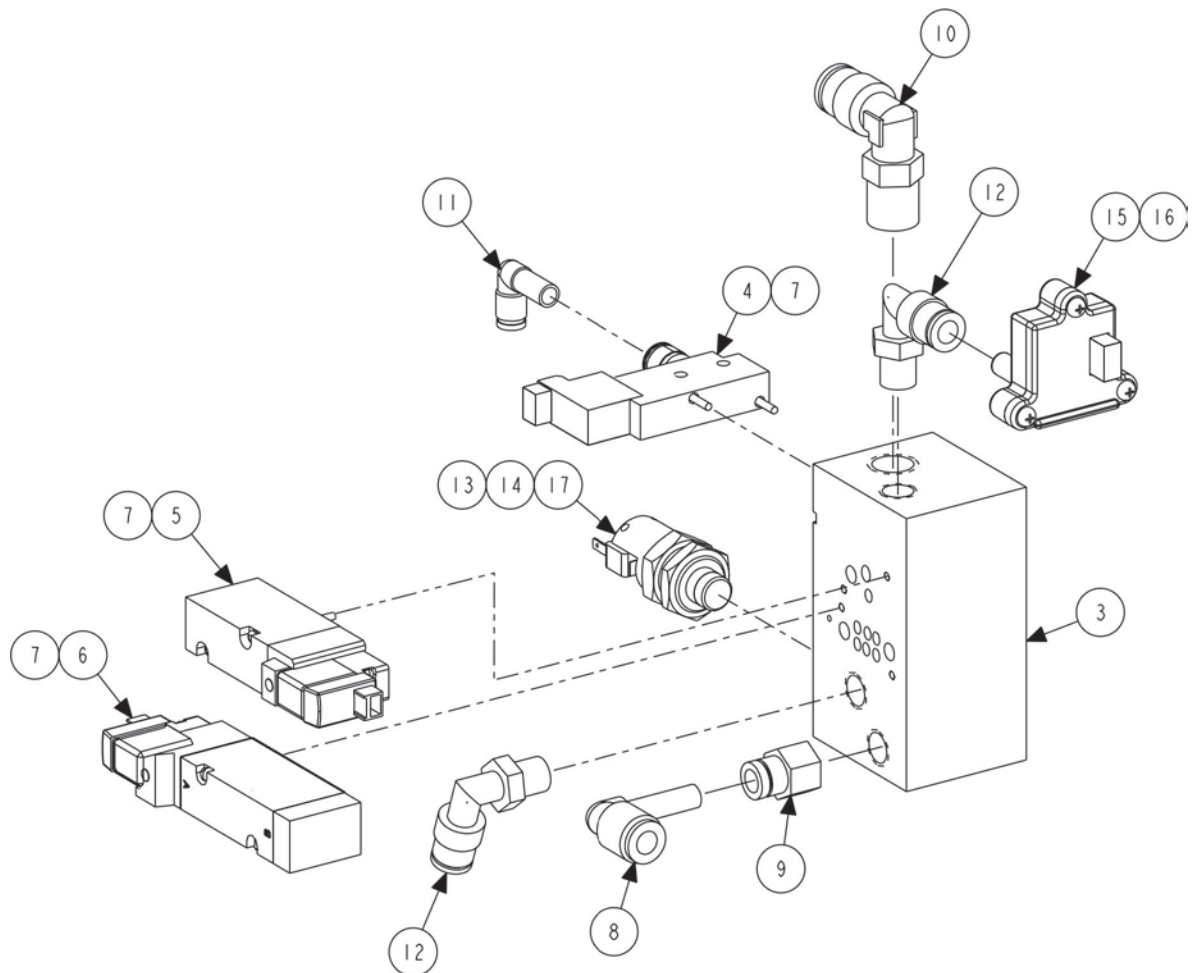


LOAD ROLLER

REFER TO NEXT SHEET FOR PARTS DESCRIPTION LISTING

PARTS DESCRIPTION LISTING

Index No.	Part Number	Description	Qty.
1	111-156-1	ROLLER ASSEMBLY, RIM SCAN (Consisting Of:)	1
2	74-105-2	HEX HEAD CAP SCREW 3/8-16 X 1.00 INCH, GRADE 5 (FULL-THREAD)	6
3	77-21-2	WASHER, LOCK 3/8 INCH INTERNAL TOOTH	10
4	62-51-2	FOOT, PLASTIC 1.06 OD X 0.44 INCH HEIGHT	1
5	75-476-2	TRUSS HEAD SHEET METAL SCREW 10 X 3/4 INCH	1
6	113-197-2	BUSHING, LRO SENSOR	1
7	41-112	RETAINER, INNER DATASET	1
8	75-423-2	SCREW, SELF TAPPING 4-40 X .38 INCH	4
9	75-128-2	PAN HEAD MACHINE SCREW 1/4-20 X 3/4 INCH	4
10	77-67-2	WASHER, FLAT 1/4 INCH	4
11	98-283-2	SPRING, AIR ACTUATOR	1
12	74-220-2	SOCKET HEAD CAP SCREW 3/8-16 X .63 INCH (FULL-THREAD)	2
13	14-1162-1-005	BRACKET, AIRBAG	1
14	108-148-2	VALVE, QUICK EXHAUST W MUFFLER	1
15	135-333-2	PIN, DOWEL 3/8 X 1.00 INCH LONG	1
16	57-653-005	BAR, SHAFT ROLLER	1
17	135-53-2	PIN, ROLL 1/4 X 1 INCH	1
18	162-128-2	TAPE, NONSKID TREAD 24 INCH TRIMMED	1
19	111-90-3	ROLLER, LOADED RUNOUT (Consisting Of:)	1
20	111-924-2	ROLLER, LOADED RUNOUT	1
21	130-169-2	BEARING 35 mm X72 mm	2
22	Field Purchase	LOCTITE RETAINING COMPOUND #609	A/R
23	69-1030	COVER, LOAD ROLLER END	2
24	Field Purchase	TAPE, 3M 4920 DOUBLE COATED FOAM	6
25	112-109-2	SNAP RING, EXTERNAL WAVE 1.375 INCH	1
26	74-420-2	BOLT, LEVELING .81-12 OUTER DIAMETER X .59 INNER DIAMETER	2
27	74-206-2	SOCKET HEAD CAP SCREW 1/2-13 X 2.00 INCH (FULL-THREAD)	2
28	77-22-2	WASHER, LOCK 1/2 INCH INTERNAL TOOTH	2
29	77-295-2	WASHER, .515 X 1.00 X .19 INCH THICK	2
30	112-110-2	SNAP RING INTERNAL, 90.5 mm DIAMETER	1
31	130-170-2	BEARING, 50 mm INNER DIAMETER X 90 mm OUTER DIAMETER	1
32	105-401-2	HOUSING, LOAD ROLLER BEARING	1
33	112-111-2	SNAP RING, SMALLLEY WHW-312	1
34	130-137-2	BEARING, 40 mm INNER DIAMETER X 80 mm OUTER DIAMETER	1
35	112-106-2	SNAP RING, TRUARC 5008-315	1
36	75-508-3	FLAT HEAD MACHINE SCREW 10-32X.50 INCH	1
37	124-117-2	O-RING .989 INNER DIAMETER X .070 INCH	1
38	46-504-2	SPACER, 7/16 X 7/8 X 5/16 INCH THICK	2
39	74-418-2	SOCKET HEAD CAP SCREW 3/8-16 X 2.00 INCH	3
40	77-296-2	WASHER, .407 X 1.00 X .19 INCH THICK	2
41	112-79-2	SNAP RING, EXTERNAL, 1-9/16 INCH DIAMETER	1
42	103-272-1-005	ARM, LOADED RUNOUT, GEN 5	1
43	97-450-2	SHAFT, ROLLER	1
44	112-83-2	SNAP RING, TRUARC 5108-137	1
45	16-321-2	TUBE, 5/16 INCH OUTER DIAMETER	9 ft.
46	76-159-2	NUT, KEPS 3/8-16	1
47	98-303-2	SPRING, HOOD	1
48	128-603-2	DECAL, AIR PRESSURE LIMITS (Not Illustrated)	1
49	137-96-1	HOSE ASSEMBLY, PNEUMATIC SUPPLY	1
50	176-35-1	LOCATOR ASSEMBLY, MAGNET	1
51	125-395-3	SENSOR, HALL, LOAD ROLLER	1
52	75-522-2	SCREW, SELF-TAPPING 10-32 X .38 INCH	2
53	145-184-2	FITTING, 1/4 INCH NPT ADAPTOR	1
54	75-248-2	ROUND HEAD MACHINE SCREW 10-24 X 3/8 INCH	2
55	108-274-1	PNEUMATIC ASSEMBLY, BALANCER, HIGH-FLOW (See Sheet 13)	1
56	136-78-2	FILTER / REGULATOR, GSP9700	1
57	145-399-2	FITTING, REDUCER 5/16 - 1/4 INCH TUBE	
58	113-179-2	BUSHING, BRAKE ACTUATOR ROD (Not Illustrated)	1

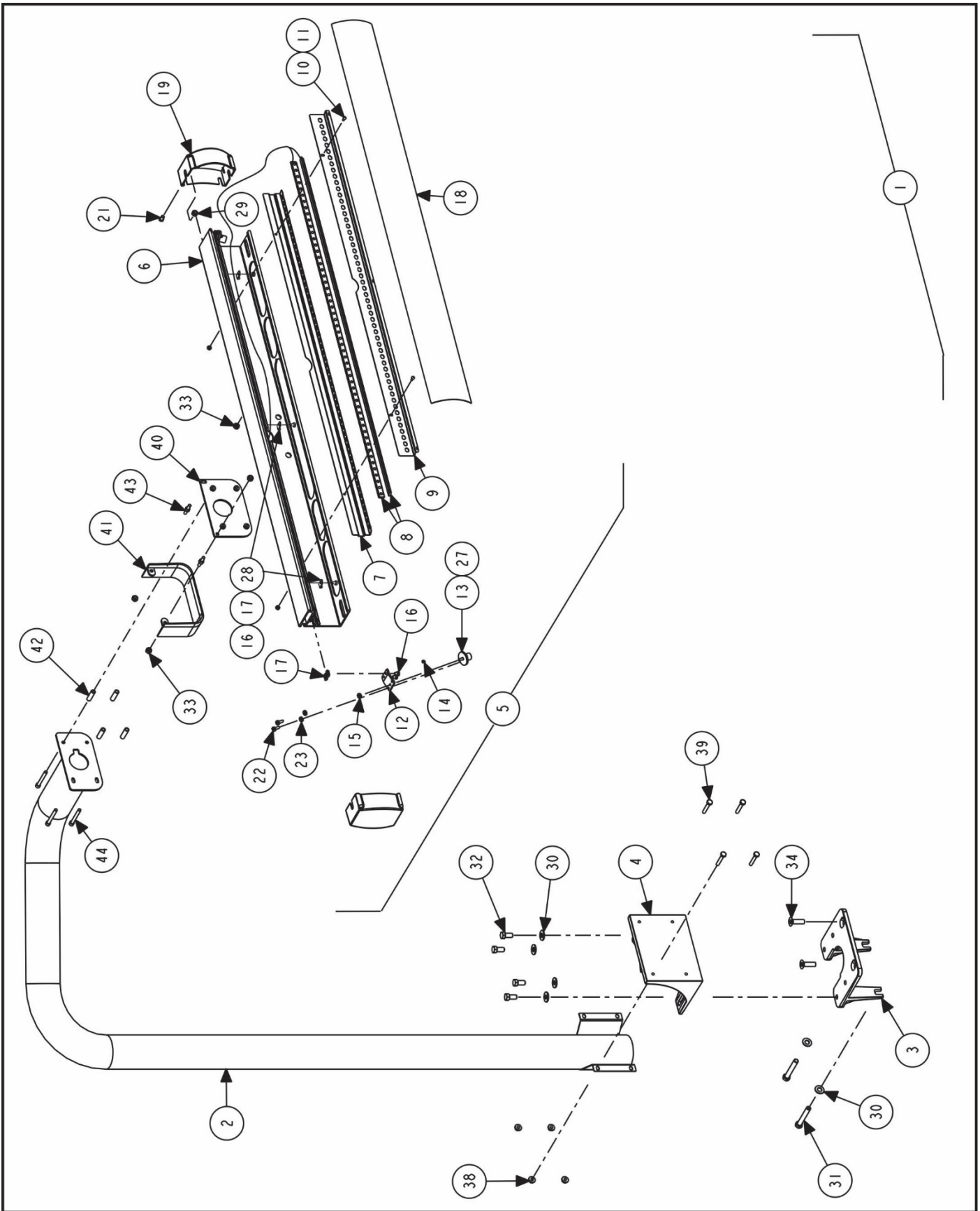


LOAD ROLLER MANIFOLD

REFER TO NEXT SHEET FOR PARTS DESCRIPTION LISTING

PARTS DESCRIPTION LISTING

Index No.	Part Number	Description	Qty.
1	111-156-1	LOAD ROLLER ASSEMBLY, GEN5 (Includes:)	REF
2	108-274-1	PNEUMATIC ASSEMBLY, BALANCER, HIGH-FLOW (Consisting Of:)	1
3	185-42-2	MANIFOLD, PNEUMATIC, HIGH-FLOW (Not Available)	1
4	108-195-2	VALVE, 3 PORT MANIFOLD MT.	1
5	108-260-2	VALVE, PNEUMATIC SOLENOID	1
6	108-276-2	VALVE, 5 PORT MANIFOLD MT	1
7	38-1094-1	CABLE, MANIFOLD ASSEMBLY	3
8	145-357-2	FITTING, 1/4 PLUG-IN ELBOW	1
9	145-281-2	FITTING, 1/4 HOSE X 1/8 NPT	1
10	145-183-2	FITTING, 1/4IN NPT ELBOW SWIVEL	1
11	145-467-2	FITTING, 1/4 TO 5/32 PLUG-IN ELBOW	1
12	145-324-2	FITTING, 1/8NPT TO 1/4 TUBE 90	2
13	18-600-2	SWITCH, PRESSURE- 65 PSI	1
14	38-1164-1	CABLE ASSEMBLY, DAQ TO INFLATION PRESS SW	1
15	125-465-1	SENSOR, PRESSURE	1
16	38-1202-1	CABLE ASSEMBLY, TC PRESSURE/TEMPATURE SENSOR	1
17	Field Purchase	LOCTITE #545 THREAD SEALANT	A/R



TOP DEAD CENTER LASER SYSTEM

REFER TO NEXT SHEET FOR PARTS DESCRIPTION LISTING

PARTS DESCRIPTION LISTING

Index No.	Part Number	Description	Qty.
1	20-2892-1	KIT, TOP DEAD CENTER LASER SYSTEM GEN 4 (Consists Of:)	1
2	16-912-1-005	TUBE ASSEMBLY, TDC LASER SUPPORT	1
3	11-1243-2	SUPPORT, TDC LASER BASE 9700	1
4	14-1129-2	BRACKET, TDC LASER BASE	1
5	105-657-1	HOUSING, TDC LASER HEADER ASSEMBLY LED (Consists Of:)	1
6	105-514-2	HOUSING, TDC LASER HEADER	1
7	14-1496-005	BRACKET, LED LIGHT BACK	1
8	35-176-2	LAMP-LED LIGHT STRIP SHORT	1
9	69-1460-005	COVER, LED LIGHT	1
10	76-12-2	NUT, HEX 6-32	2
11	75-162-2	ROUND HEAD MACHINE SCREW 6-32 X .31 INCH	2
12	14-1130-2	BRACKET, TDC LASER MOUNT	2
13	105-530-1	HOUSING, TDC LASER ASSEMBLY	2
14	98-427-2	SPRING, TDC LASER ADJUSTMENT	2
15	76-61-2	NUT, KEPS 10-32	2
16	75-608-2	PAN HEAD MACHINE SCREW 10-32 X .31 INCH	5
17	76-382-2	NUT-T	5
18	190-192-2	SIGN, TDC LASER SYSTEM	1
19	69-1204-2	COVER, TDC LASER END CAP	2
20	Field Purchase	ADHESIVE, LOCTITE 242	A/R
21	75-535-2	LOW HEAD SOCKET CAP SCREW 1/4-20 X .38 INCH	2
22	75-161-2	PAN HEAD MACHINE SCREW 10-32 X .50 INCH	4
23	76-11-2	NUT, HEX 10-32	4
24	128-1155-2	DECAL, LASER COMPLIANCE 2M	1
25	128-1308-2	DECAL, RX CABLE WRAP, RIGHT (Not Illustrated)	1
26	128-1309-2	DECAL, RX CABLE WRAP, LEFT (Not Illustrated)	1
27	77-35-2	WASHER, FLAT 5/8 INCH	2
28	12-158-2	CLAMP, CABLE NYLON .312 INCH DIAMETER	3
29	76-13-2	NUT, HEX 1/4-20	4
30	77-65-2	WASHER, FLAT 3/8 INCH	6
31	74-16-2	HEX HEAD CAP SCREW 3/8-16 X 2.50 INCH (FULL-THREAD)	2
32	74-59-2	HEX HEAD CAP SCREW 3/8-16 X .75 INCH (FULL-THREAD)	4
33	76-13-2	NUT, HEX 1/4-20	6
34	74-461-2	BOLT, FLAT HEAD SOCKET CAP SCREW 3/8-16 X 1/4 INCH	2
35	38-1206-2	CABLE, PC POWER SUPPLY ADAPTOR (Not Illustrated)	1
36	77-45-2	WASHER-FLAT 3/16 (Not Illustrated)	2
37	76-159-2	NUT, KEPS 3/8 - 16 (Not Illustrated)	4
38	76-367-2	NUT, FLANGE 1/4 - 20	4
39	75-703-2	HEX HEAD CAP SCREW 1/4-20 X 1.5 INCH GRADE 8	4
40	51-2332-1-005	PLATE, TDC HAMMERHEAD MOUNT ASSEMBLY	1
41	69-1271-2	COVER, TDC ADJUSTMENT	1
42	98-443-2	SPRING, TDC LASER ADJUSTMENT	4
43	134-141-2	STUD, 1/4-20 DOUBLE ENDED, BRASS	2
44	75-877-3	SOCKET HEAD CAP SCREW 1/4-20 X 2.00 INCH NYLON	4
45	75-535-2	LOW HEAD SOCKET CAP SCREW 1/4-20 X .38 INCH (Not Illustrated)	2
46	37-693-1	WIRE ASM, GEN3 LED HAMMERHEAD (for retrofitting to a GEN 3) (Not Illus.)	1

