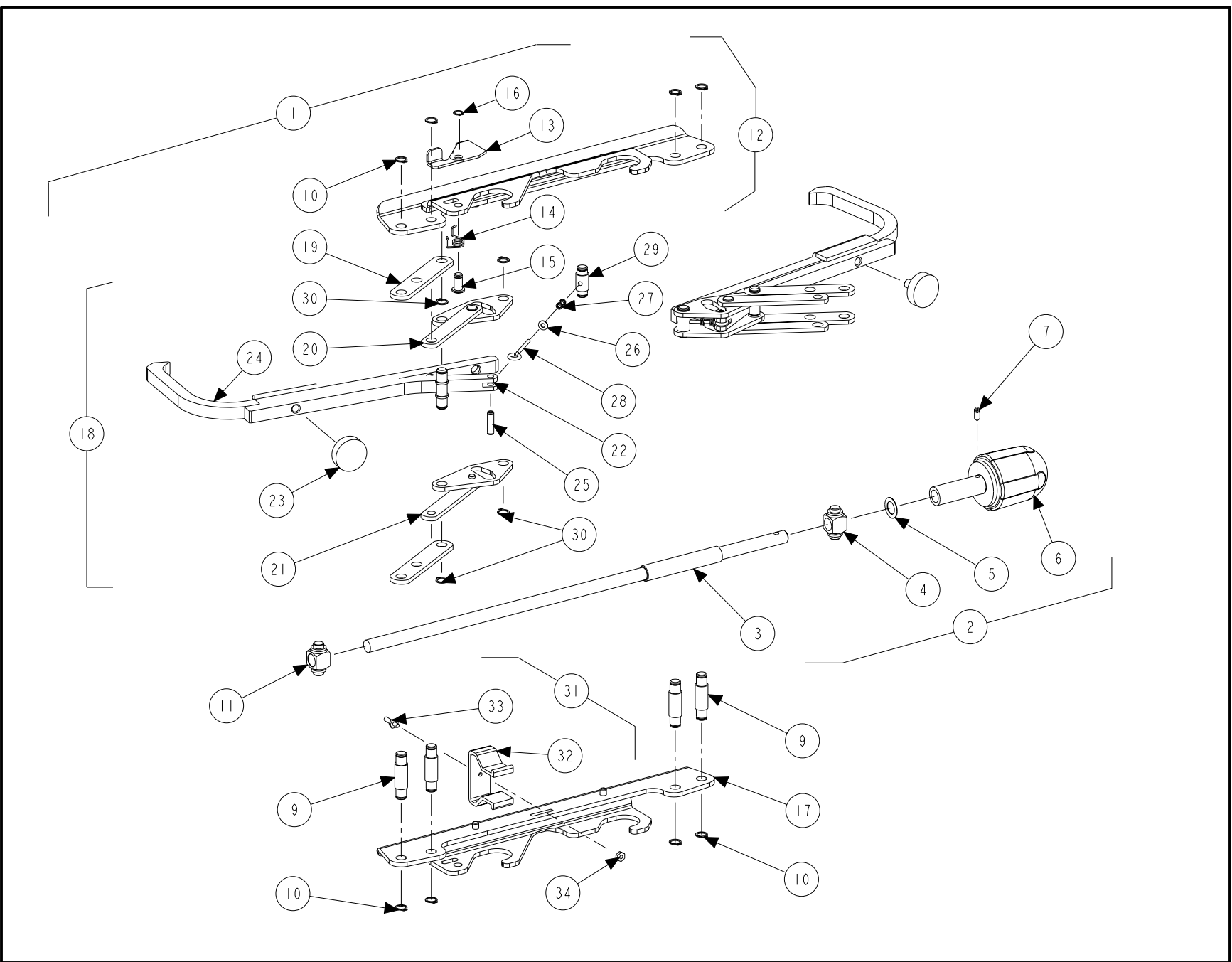


20-1789-1 TIRE CLAMP KIT

© 2004 Hunter Engineering Company

Parts Description Listing

Index No.	Part Number	Description
A	12-187-1	CLAMP-TIRE HOOK ADJUSTABLE (See Sheet 2)
B	69-821-1	COVER-RIM STUD ASSEMBLY
C	69-822-1	COVER-RIM STUD ASSEMBLY
D	121-218-1	BLOCK ASSEMBLY-TIRE CLAMP



20-1789-1 KIT TIRE CLAMP 10-24 INCH SCA
REFER TO NEXT SHEET FOR PARTS DESCRIPTION LISTING

Parts Description Listing

Index No.	Part Number	Description	Qty.
1	12-187-1	CLAMP, TIRE HOOK ADJUSTABLE (Consisting Of:)	4
2	97-475-1	SHAFT ASSEMBLY, ACME TIRE HOOK (Consisting Of:)	1
3	97-329-1	SHAFT, TIRE CLAMP ACME THREAD	1
4	23-44-2	YOKE, TIRE CLAMP SHAFT	1
5	77-220-2	WASHER, SPRING 3/8 ZP	1
6	34-167-2	KNOB, TIRE CLAMP ROGAN HP-1	1
7	75-234-2	SSS 8-32 x 3/8 CONE PT BO	1
8	162-47-2	ADHESIVE, THREAD LOCKING (Not Illustrated)	2
9	159-13-2	AXLE, LINK TIRE CLAMP	4
10	112-71-2	SNAP RING, TRUARC 5100-31	8
11	76-290-2	NUT, ACME 3/8 DOUBLE START ZP	1
12	72-358-1	BASE, TIRE CLAMP TOP ASSEMBLY (Consisting Of:)	1
13	144-78-2	LATCH, TIRE HOOK	1
14	98-394-2	SPRING, LATCH TIRE CLAMP	1
15	135-362-2	PIN, LATCH PIVOT TIRE CLAMP	1
16	112-53-2	SNAP RING 1/4 IN EXTERNAL	1
17	72-359-1	BASE, TIRE HOOK BOTTOM ASSEMBLY	1
18	216-73-1	HOOK, ASSEMBLY TIRE CLAMP (Consisting Of:)	2
19	120-88-2	LINK, DRIVE TIRE CLAMP	2
20	120-83-1	LINK, ASSEMBLY TOP TIRE CLAMP	1
21	120-84-1	LINK, ASSEMBLY BOTTOM TIRE CLAMP	1
22	11-1049-3	SUPPORT, HOOK TIRE CLAMP	1
23	75-595-1	SCREW, THUMB 1/4-20 UNC	1
24	216-74-2	HOOK, ADJ TIRE CLAMP	1
25	135-281-2	PIN ROLL .188 DIA. x .688 LONG	1
26	77-79-2	WASHER, FLAT 4 SPECIAL ZP	1
27	98-305-2	SPRING, COMPRESSION .18 O.D.	1
28	63-167-2	ROD, TIRE CLAMP TOGGLE SPRING	1
29	135-277-2	PIN, CLEVIS	1
30	112-71-2	SNAP RING, TRUARC 5100-31	4
31	121-218-1	BLOCK ASSEMBLY, TIRE CLAMP (Consisting Of:)	1
32	121-217-2	BLOCK, TIRE CLAMP	1
33	106-147-2	PIN, CENTER TIRE CLAMP	1
34	76-22-2	NUT, HEX 4-40 ZP	4