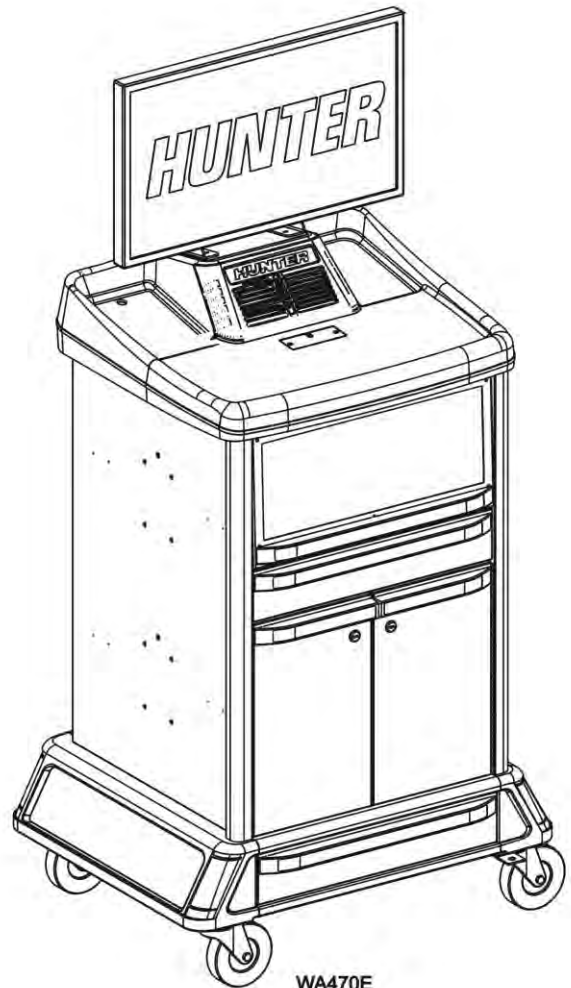
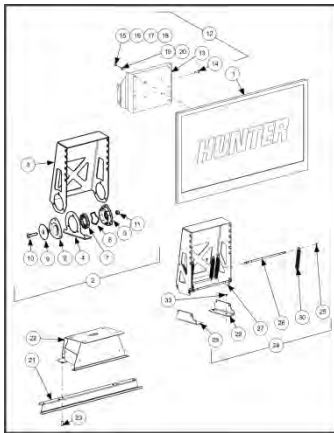


WA370E

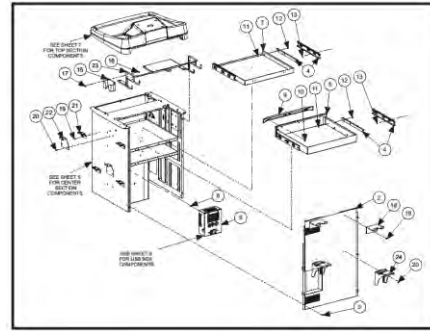


WA470E

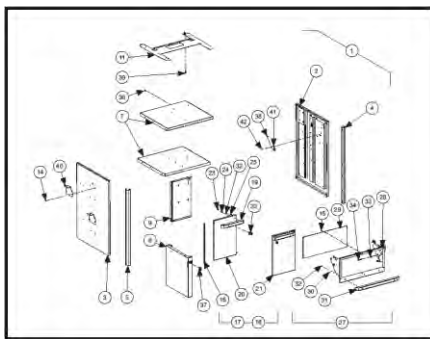
## WA370, WT370, WA470 AND WT470 SERIES COMPACT CABINETS



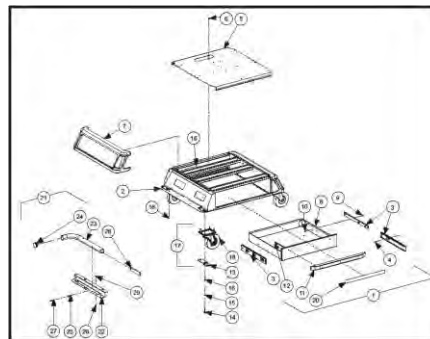
**SHEET 3**



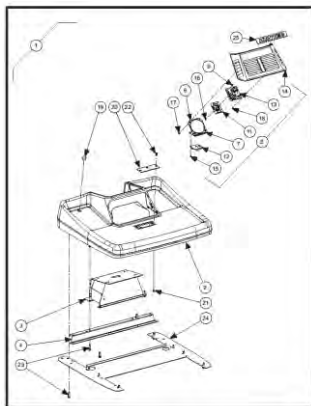
**SHEET 4**



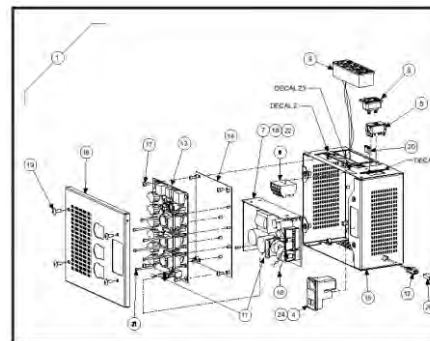
**SHEET 5**



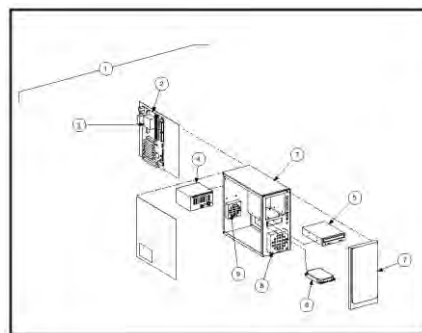
**SHEET 6**



**SHEET 7**



**SHEET 8**



**SHEET 9**

**WA370, WT370, WA470 AND WT470 SERIES MOBILE CABINET**

**REFER TO NEXT SHEET FOR PARTS DESCRIPTION LISTING**

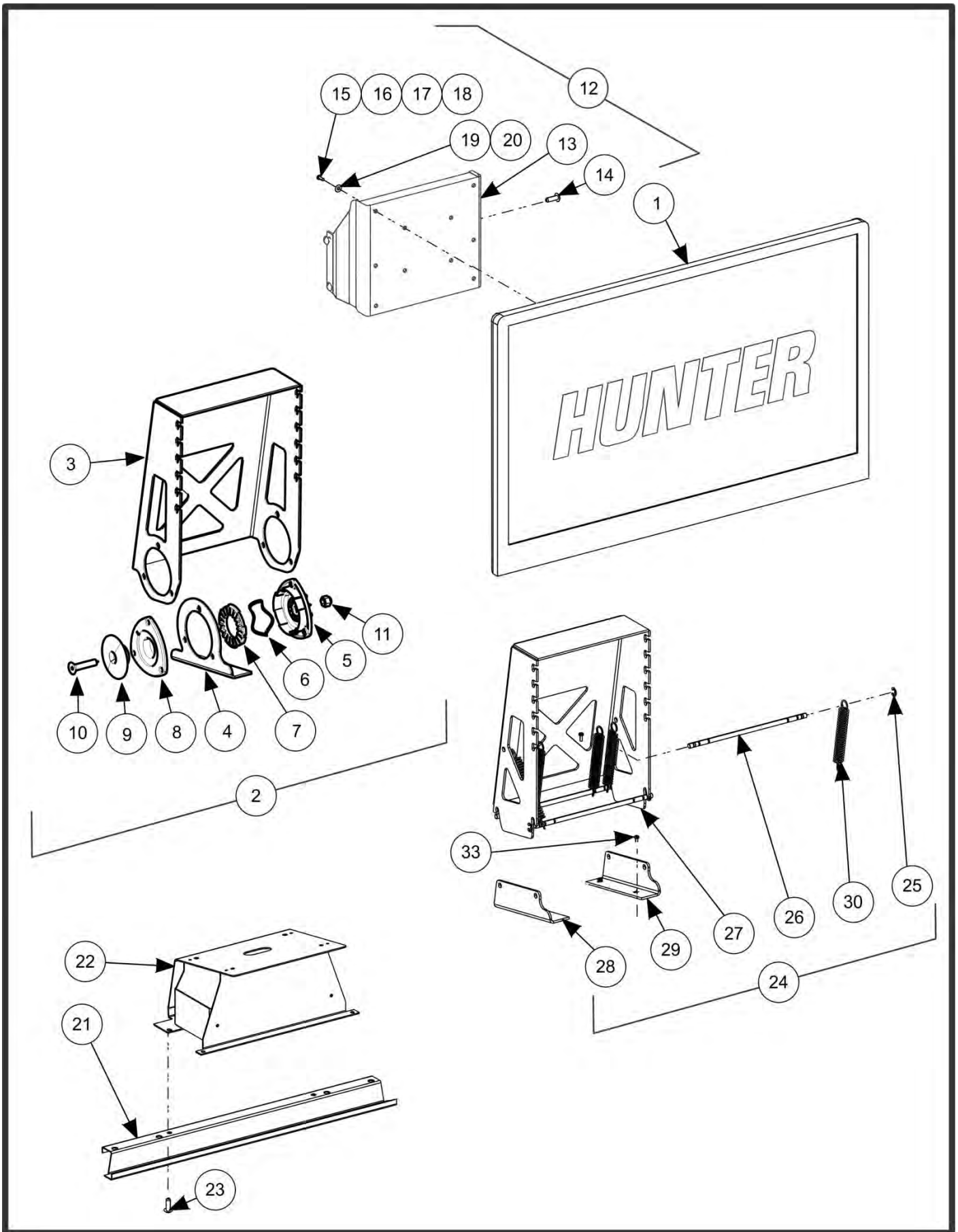
**PARTS DESCRIPTION LISTING**

**Table of Contents**

Sheet No.	Description	PDF Navigation: Click on thumbnail image or sheet description below to go to referenced sheet. To open sheet under new tab, click with middle button or Ctrl-click (browser dependent).
3	LCD MOUNTS	
4	CABINET ASSEMBLY (BACK)	
5	CABINET ASSEMBLY (BODY)	
6	CABINET BASE	
7	KEYBOARD SUPPORT	
8	USB BOX ASSEMBLY (G3A)	
9	REPLACEMENT PC AND PC COMPONENTS	

**Associated Kits and Components**

Kit / Part Number	Description	Reference
20-2872-1	KIT, 24-27 INCH SWIVEL MONITOR MOUNTING	SHEET 3
20-2871-1	KIT, STANDARD MONITOR MOUNTING	SHEET 3
20-2529-1	KIT, SPEAKER & HOUSING, USB	SHEET 3
158-82-2	WHEEL, CABINET CASTER PACKAGE	SHEET 6
20-1865-1	KIT, HOLE PLUGS ALIGNER CABINET	SHEET 4
DSP700T	DSP700T (WT47X Only)	FORM 4-177
20-2150-1	KIT, OBD2 WIRELESS W/POD (WA38X, WA48X and WT48X Only)	FORM 4-160
146-57-1	CONTROL ASSEMBLY, REMOTE WITH ZOOM (Not Illustrated)	FORM 4-39
WA15-S	BRAKE PEDAL DEPRESSOR (Not Illustrated)	
28-75-1	HOLDER, STEERING WHEEL (Not Illustrated)	



## LCD MOUNTS

REFER TO NEXT SHEET FOR PARTS DESCRIPTION LISTING

**PARTS DESCRIPTION LISTING**

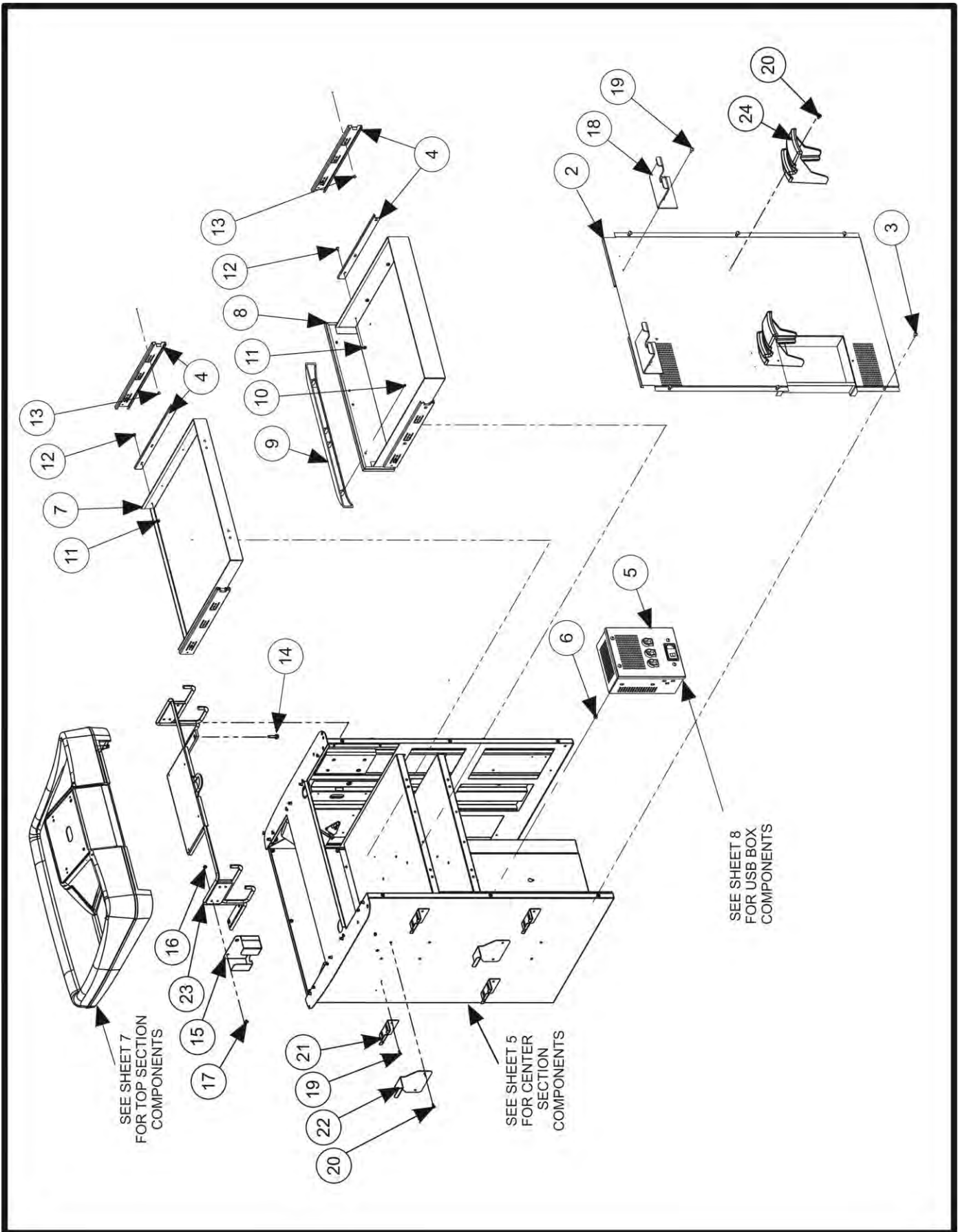
Index No.	Part Number	Description	Qty.
1	227-107-2*	DISPLAY, 24 INCH LCD	1
OR	227-108-2*	DISPLAY, 27 INCH LCD (Not Illustrated)	1
2	14-1621-1*	BRACKET ASSEMBLY - MONITOR SUPPORT	1
3	14-1622-005	BRACKET, CLUTCH MONITOR SUPPORT	1
4	14-1623-005	BRACKET, BASE CLUTCH MONITOR LEFT	1
OR	14-1624-005	BRACKET, BASE CLUTCH MONITOR RIGHT	1
5	105-672-2	HOUSING, CLUTCH MONITOR INSIDE	2
6	98-521-2	SPRING - WAVE MONITOR CLUTCH	2
7	99-158-2	GEAR - CLUTCH MONITOR SUPPORT	2
8	105-671-2	HOUSING - CLUTCH MONITOR OUTSIDE	2
9	53-212-2	CAP - CLUTCH HOUSING	2
10	74-600-2	FHSCS 3/8-16 x 1.75	2
11	76-275-2	NUT-LOCK 3/8-16 NYLON INSERT ZP	2
12	20-2871-1*	KIT, MOUNTING FIXED MONITOR ELITE	1
13	14-1569-1-005	BRACKET ASSEMBLY - MONITOR FIXED	1
14	75-816-2	SCREW-SELF-TAPPING 1/4 X 1.0 INCH HEX WASHER HEAD HI-LO	4
15	75-700-2	PAN HEAD MACHINE SCREW M6-1.0 X 16MM	6
16	75-659-2	PAN HEAD MACHINE SCREW M4X.7X12MM (Not Illustrated)	6
17	75-787-2	PAN HEAD MACHINE SCREW M6-1.0 X 25MM (Not Illustrated)	6
18	75-679-2	PAN HEAD MACHINE SCREW M4 X .7 X 16MM (Not Illustrated)	6
19	77-67-2	WASHER, FLAT 1/4 INCH	12
20	77-46-2	WASHER, FLAT 8	12
21	116-263-005	STIFF - MONITOR SUPPORT	1
22	11-1534-1-005	SUPPORT ASSEMBLY, BRACE MONITOR WELD	1
23	75-481-2	SBHCS 1/4-20 X .50 BO	1
24	14-1573-1	BRACKET ASSEMBLY, MONITOR SUPPORT	1
25	112-20-2	SNAP RING-X5144-31 OR EQUAL	6
26	135-559-2	PIN, MONITOR MOUNT	3
27	14-1564-005	BRACKET, MONITOR MODULAR CABINET	1
28	14-1565-005	BRACKET, BASE MONITOR LEFT	1
29	14-1566-005	BRACKET, BASE MONITOR RIGHT	1
30	98-504-2	SPRING, EXTENSION MONITOR	5
31	14-1569-1-005*	BRACKET ASSEMBLY - MONITOR FIXED	REF
32	75-481-2*	SOCKET BUTTON HEAD CAP SCREW, 1/4-20X.50 INCH	4
33	75-816-2*	SCREW, SELF TAPPING 1/4 X 1.0 INCH HI-LO	4
34	94-38-2*	TIE CABLE (Not Illustrated)	2
35	70-143-2*	HARNESS, SPIRAL WRAP .25 INCH OUTER DIAMETER BLACK (Not Illustrated)	18
36	77-67-2*	WASHER, FLAT 1/4 INCH	12
OR	77-46-2*	WASHER, FLAT 8 (Not Illustrated)	12
37	75-700-2*	PAN HEAD MACHINE SCREW M6-1.0 X 16MM	6
OR	75-659-2*	PAN HEAD MACHINE SCREW M4X.7X12MM (Not Illustrated)	6
OR	75-787-2*	PAN HEAD MACHINE SCREW M6-1.0 X 25MM (Not Illustrated)	6
OR	75-679-2*	PAN HEAD MACHINE SCREW M4 X .7 X 16MM (Not Illustrated)	6
38	38-1233-2*	CABLE, PC POWER EXTENTION (CM Cabinet Only) (Not Illustrated)	1

\* Monitors and mounting kits sold separately



11250 HUNTER DRIVE BRIDGETON, MO 63044

PPP-Paint Code Required  
 A/R-As Required  
 REF-Reference

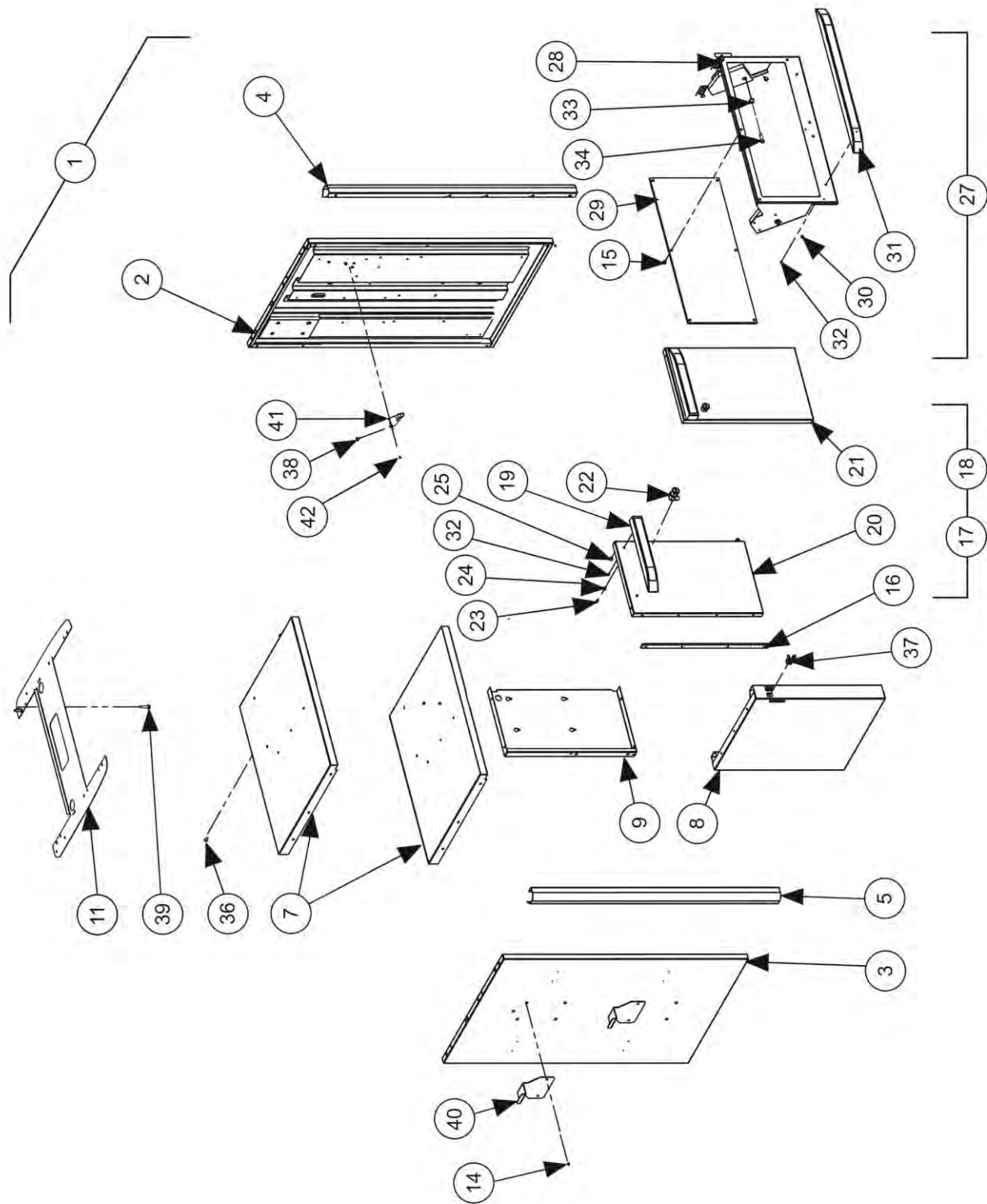


## CABINET ASSEMBLY (BACK)

REFER TO NEXT SHEET FOR PARTS DESCRIPTION LISTING

**PARTS DESCRIPTION LISTING**

Index No.	Part Number	Description	Qty.
1	30-518-1 or 30-524-1	CABINET, ELITE	1
2	73-1109-1-PPP	PANEL WELD, REAR	1
3	75-481-2	SOCKET BUTTON HEAD CAP SCREW 1/4-20 X .50 INCH	6
4	114-96-2	SLIDE-DRAWER	4
5	232-246-1	ELECT ASM-USB INTF BOX G3A (See Sheet 8)	1
6	75-312-2	TRUSS HEAD MACHINE SCREW 10-32 X .50 INCH	4
7	229-104-PPP	DRAWER-PRINTER	1
8	229-106-1-PPP	DRAWER-LARGE (WA48X Only)	1
9	142-184-2	HANDLE-PRINTER COVER	1
10	75-800-2	PAN HEAD SHEET METAL SCREW SELF TAPPING #10-16 X 1/2 INCH HI LO	4
11	76-71-2	NUT, KEPS 8-32	12
12	75-345-2	TRUSS HEAD MACHINE SCREW 8-32X1/4 INCH	12
13	48-57-2	RIVET, BLIND 5/32X1/4 INCH	12
14	75-816-2	SCREW, SELF TAPPING 1/4 X 1.0 INCH HI-LO	8
15	11-1384-005	SUPPORT, CODELINK STORAGE	1
16	76-71-2	NUT, KEPS 8-32	4
17	75-481-2	SOCKET BUTTON HEAD CAP SCREW 1/4-20 X .50 INCH	4
18	14-1559-005	BRACKET, BRAKE PEDAL/ STEERING WHEEL HOLDER	2
19	75-401-2	TRUSS HEAD SHEET METAL SCREW 10X .50 INCH	20
20	75-828-2	TRUSS HEAD SHEET METAL SCREW 10X .63 INCH	8
21	14-1520-000	BRACKET, ELITE HOOK SPACER	8
22	216-117-000	HOOK, ACCESSORIES CART HOOK STORAGE	4
23	117-222-1-005	HANGER ASSEMBLY, CABINET ACCESSORIES	1
24	11-1510-2	SUPPORT, EXTENSION RING STORAGE	4
25	128-1010-3	DECAL, COMPOSITE R/S811 (Not Illustrated)(Consisting Of:)	1
26	128-1120-2	DECAL, ETL LISTING MARK (Not Illustrated)	1
27	128-156-2	DECAL, CAB LOCATION WARNING (Not Illustrated)	1
28	128-158-2	DECAL, SERVICEABLE WARNING (Not Illustrated)	1
29	128-479-2	DECAL, CE COMPLIANCE (Not Illustrated)	1
30	128-508-2	DECAL, TUV STANDBY SWITCH (Not Illustrated)	1
31	128-610-2	DECAL, HFSS APPROVAL US/EUROPE (Not Illustrated)	1
32	128-1502-2	DECAL, HANDLES WA470 (Not Illustrated)	1
OR	128-1505-2	DECAL, HANDLES WA370 (Not Illustrated)	1
32	128-1523-2	DECAL, HANDLE WINALIGN WA4XX (Not Illustrated)	1
OR	128-1524-2	DECAL, HANDLE WINALIGN WA3XX (Not Illustrated)	1
33	128-1527-2	DECAL, LONG HANDLE PREMIUM (WA470E Only) (Not Illustrated)	3
OR	128-1528-2	DECAL, LONG HANDLE STANDARD (WA370E Only) (Not Illustrated)	3
34	128-1516-2	DECAL, HUNTER LARGE PRINTER DRAWER (WA470E Only) (Not Illustrated)	1
35	37-675-1	WIRE ASSEMBLY, AUDIO AMP ALIGNER (Not Illustrated)	1



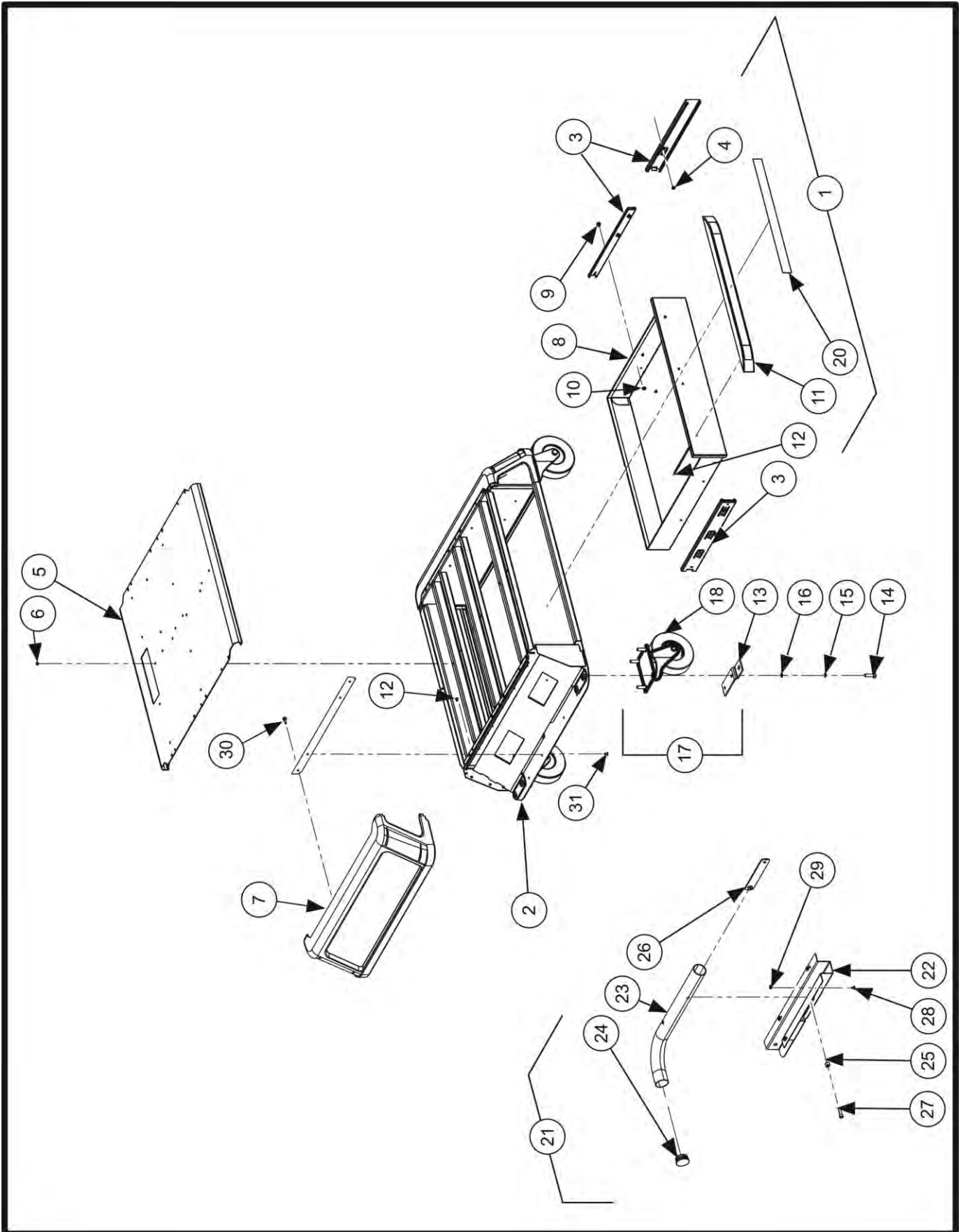
### CABINET BODY

REFER TO NEXT SHEET FOR PARTS DESCRIPTION LISTING



**PARTS DESCRIPTION LISTING**

Index No.	Part Number	Description	Qty.
1	30-518-1-E or 30-524-1-E	CABINET, ELITE WA370E OR WA470E	1
2	71-232-1-PPP	SIDE WELDMENT, ELITE RIGHT	1
3	71-231-1-PPP	SIDE WELDMENT, ELITE LEFT	1
4	11-1498-PPP	SUPPORT, FRONT TRIM RIGHT	1
5	11-1499-PPP	SUPPORT, FRONT TRIM LEFT	1
6	76-415-2	NUT-HEX INSERT 10-32 (Not Illustrated)	6
7	215-170-PPP	SHELF, ELITE CABINET	2
8	171-272-PPP	PANEL, CENTER DIVIDER	1
9	171-271-PPP	PANEL, STIFF-ELITE	REF
10	75-317-2	SCREW, THEAD ROLLING 1/4-20X5/8 INCH (Not Illustrated)	8
11	51-2794-005	PLATE, CABINET TOP SMALL	1
12	73-1112-PPP	PANEL, FRONT CROSS BRACE (Not Shown) (WA37X Only)	1
13	48-56-2	RIVET-BLIND 3/16X1/4 INCH (Not Illustrated)	51
14	75-345-2	TRUSS HEAD MACHINE SCREW 8-32X1/4 INCH	12
15	76-71-2	NUT, KEPS 8-32	12
16	160-57-2	HINGE, DOOR	2
17	132-179-1	DOOR ASSEMBLY, ELITE CABINET LEFT (Consisting Of:)	1
18	132-180-1	DOOR ASSMEMBLY, ELITE CABINET RIGHT (Consisting Of:)	1
19	142-185-2	HANDLE, DOOR LEFT (142-186-2 For Right Handle)	1
20	132-177-1-PPP	DOOR ASSEMBLY, WELDMENT LEFT	1
21	132-178-1-PPP	DOOR ASSEMBLY, WELDMENT RIGHT	1
22	144-54-2	LOCK, CAM TYPE	1
23	135-144-2	PIN, STRIKER	4
24	76-262-2	NUT, LOCK 8-32 NYLON INSERT	1
25	228-90-2	STOP, DOOR BUMPER	2
26	75-800-2	PAN HEAD SHEET METAL SCREW SELFTAP #10-16X1/2 INCH (Not Illustrated)	2
27	69-1470-1	COVER-PRINTER PREMIUM (WA470E Only) (Consisting Of:)	1
OR	69-1469-1	COVER-PRINTER (WA370E Only) (Consisting Of:) (Different than Shown)	1
28	73-1106-1-005	PANEL WELD, PRINTER COVER (WA47X Only)	1
OR	73-1102-1-005	PANEL WELD, PRINTER COVER (WA37X Only) (Different than Shown)	1
29	51-2764-2	PLATE, PRINTER COVER PLASTIC (WA47X Only)	1
OR	51-2763-2	PLATE, PRINTER COVER PLASTIC (WA37X Only)	1
30	76-104-2	NUT, ACORN 8-32	6
31	142-184-2	HANDLE, PRINTER COVER	1
32	75-800-2	PAN HEAD SHEET METAL SCREW SELF TAPPING #10-16 X 1/2 INCH	4
33	113-221-2	BUSHING, PIVOT PRINTER COVER	4
34	75-572-2	SHOULDER SCREW 1/4-20 X .312 INCH	2
35	75-15-2	ROUND HEAD MACHINE SCREW 10-32X.50 INCH	2
36	75-312-2	TRUSS HEAD MACHINE SCREW 10-32X1/2 INCH	10
37	144-21-2	LATCH, DOOR	2
38	228-90-2	STOP - DOOR BUMPER	4
39	75-816-2	SCREW-SELF TAPPING 1/4 X 1.0 INCH HI-LO	8
40	14-1520-005	BRACKET, ELITE HOOK SPACER	4
41	14-1555-000	BRACKET, BUMPER PRINTER	2
42	75-421-2	HEX HEAD MACHINE SCREW 10-32X .50 INCH	4

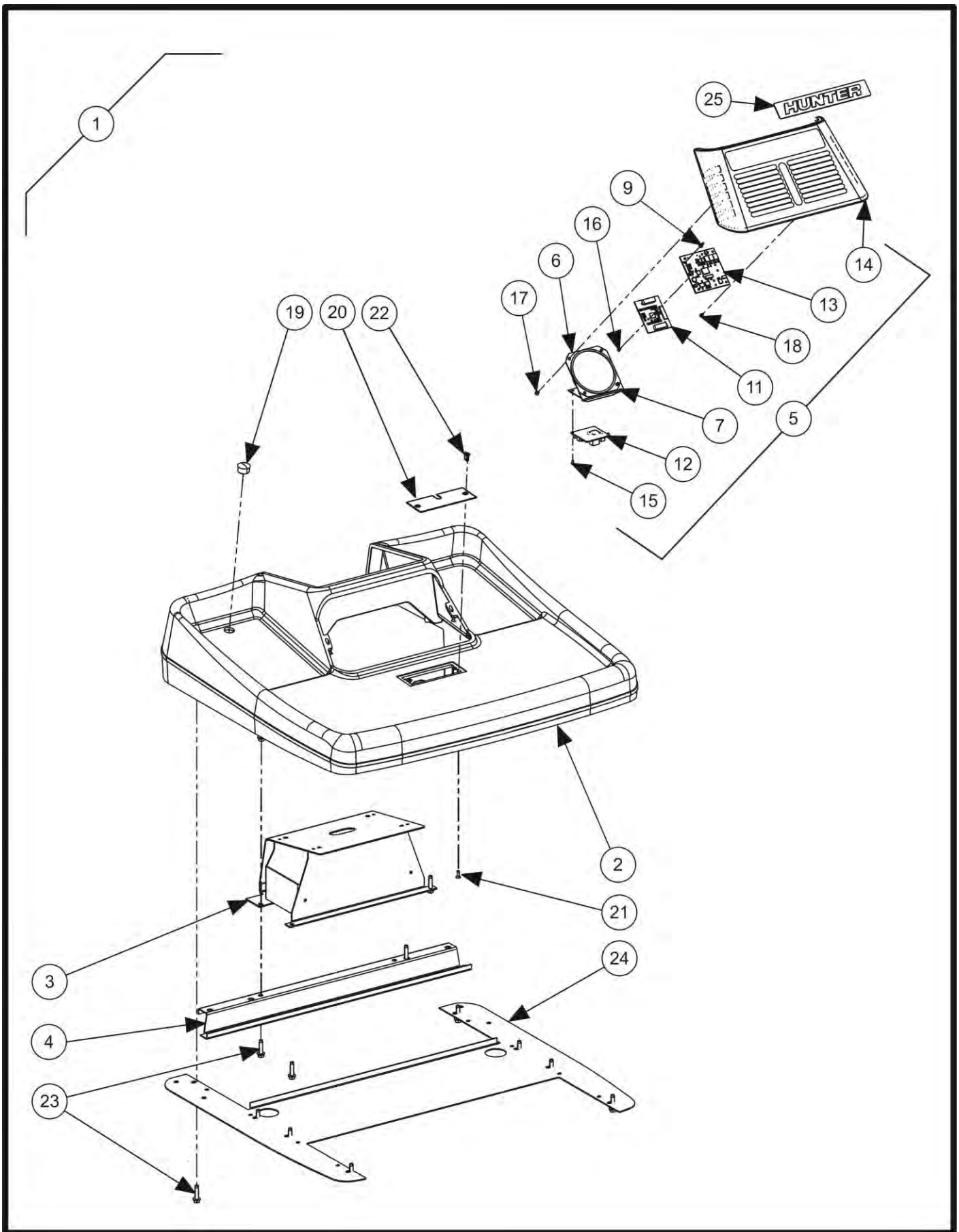


# CABINET BASE

REFER TO NEXT SHEET FOR PARTS DESCRIPTION LISTING

**PARTS DESCRIPTION LISTING**

Index No.	Part Number	Description	Qty.
1	72-556-1	BASE, MODULAR CABINET DRAWER DELETE (Consisting Of:)	1
2	72-568-1-005	BASE, SMALL CABINET WELD	1
3	114-96-2	SLIDE, DRAWER	2
4	48-57-2	RIVET, BLIND 5/32X1/4 INCH	6
5	72-535-005	BASE, TOP SMALL	1
6	48-56-2	RIVET, BLIND 3/16X1/4 INCH	12
7	53-191-2	CAP, CABINET-SIDE	2
8	229-106-1-005	DRAWER, LARGE	1
9	75-345-2	TRUSS HEAD MACHINE SCREW 8-32X1/4 INCH	6
10	76-71-2	NUT, KEPS 8-32	6
11	142-184-2	HANDLE, PRINTER COVER	1
12	75-800-2	PAN HEAD SHEET METAL SCREW SELF TAPPING #10-16 X 1/2 INCH HI LO	20
13	14-1528-GLV	BRACKET, CABINET-BASE (For Shipping)	2
14	74-39-2	HEX HEAD CAP SCREW 5/16-18X1.00 INCH	16
15	77-20-2	WASHER, FLAT 5/16 INCH	16
16	77-60-2	WASHER, LOCK 5/16 INCH	16
17	158-106-2	WHEEL, CABINET CASTER PACKAGE (Consisting Of:)	1
18	158-58-2	CASTER, PLATE	2
19	158-57-2	CASTER, PLATE WITH BRAKE (Not Shown)	2
20	128-1527-2	DECAL, LONG HANDLE PREMIUM (WA47X Only)	1
OR	128-1528-2	DECAL, LONG HANDLE STANDARD (WA37X Only)	1
21	16-1061-1	TUBE, CENTER CM ANTI TIP (CM Cabinet Only) (Consisting Of:)	1
22	11-1529-005	CHANNEL, CENTER CM ANTI TIP	1
23	16-1055-005	TUBE, CABINET CM	1
24	43-156-2	PLUG, 1.5 INCH OUTER DIAMETER RUBBER - BLACK	1
25	46-613-2	SPACER-PLASTIC 1/2 INCH OUTER DIAMETER X 3/8 INCH	1
26	57-891-1-005	BAR, NUT ANTI PIVOT	1
27	75-239-2	SOCKET HEAD CAP SCREW, 1/4-20X1.00 INCH FULL THREAD	1
28	75-757-2	SOCKET BUTTON HEAD CAP SCREW 10-32 X .50 INCH (CM Cabinet Only)	4
29	76-61-2	NUT, KEPS 10-32 (CM Cabinet Only)	4

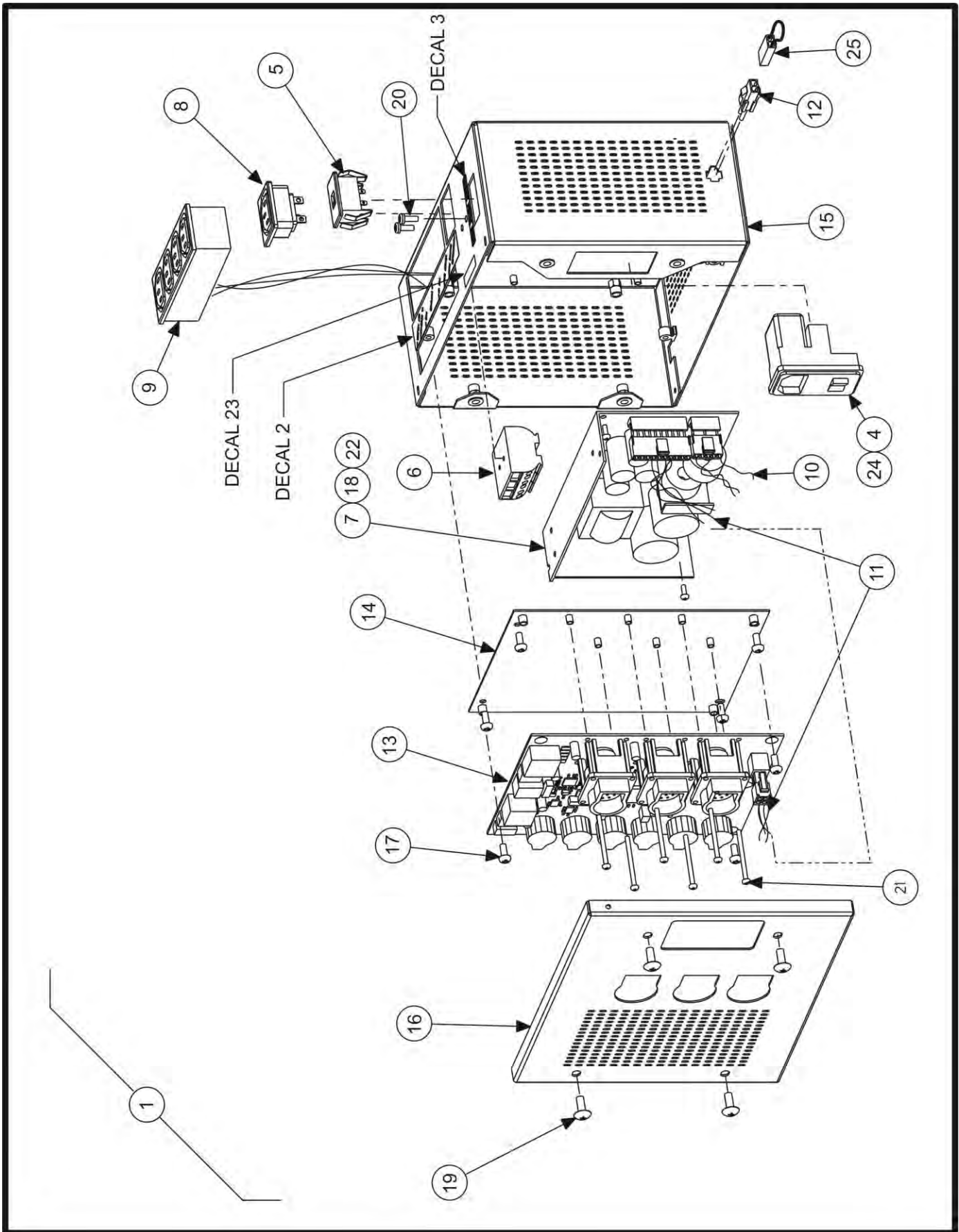


## KEYBOARD SUPPORT

REFER TO NEXT SHEET FOR PARTS DESCRIPTION LISTING

**PARTS DESCRIPTION LISTING**

Index No.	Part Number	Description	Qty.
1	11-1561-1	SUPPORT, KEYBOARD WA370/470	1
2	11-1514-2	SUPPORT, KEYBOARD ELITE STANDARD	REF
3	11-1534-1-005	SUPPORT ASSEMBLY, BRACE MONITOR WELD	1
4	116-263-005	STIFF, MONITOR SUPPORT	1
5	232-278-1	ELECT ASSEMBLY, SPEAKER / HF POD	1
6	109-173-1	SPEAKER ASSEMBLY, 3.5" INCH WITH CABLE	1
7	14-1517-1	BRACKET ASSEMBLY, SPEAKER PCB	1
8	162-107-2	ADHESIVE, CA GEL (Not Illustrated)	1
9	163-122-2	LENS, LED VERTICAL .45 INCH BOARD MOUNT	3
10	38-810-2	CABLE, 8COND PHONE W/CONNECTIONS 6 FOOT (Not Illustrated)	1
11	45-1281-1-1	PCA, RADIO MODULE POD/CODELINK2	1
12	45-1451-1	PCA, MONO AUDIO AM	1
13	232-287-1	ELECT ASSEMBLY, HF POD BOARD	1
14	69-1477-2	COVER, SPEAKER GRILL	1
15	75-104-2	PAN HEAD MACHINE SCREW 4-40X.19 INCH	2
16	75-618-2	PAN HEAD MACHINE SCREW-2-56 X 1/4 INCH	1
17	75-686-2	SCREW, ROUND HEAD SHEET METAL SCREW #6 X 1/4 INCH HI-LO	4
18	75-712-2	SCREW, SELT TAPPING #4 X .19 INCH HI-LO	4
19	43-152-2	PLUG, DOMED .75 INCH DIAMETER X .25 INCH THICK	1
20	69-1483-005	COVER, KEYBOARD CABLE ELITE SMALL	1
21	75-740-2	SCREW, SELF TAPPING PAN HEAD SHEET METAL SCREW 8-18 HI-LO	2
22	75-814-2	STAP, FULL HEAD SHEET METAL SCREW #8 X .50 INCH HI-LO	2
23	75-816-2	SCREW, SELF TAPPING 1/4 X 1.0 INCH HI-LO	REF
24	51-2794-005	PLATE, CABINET TOP	REF
25	128-1482-2	LABEL, HUNTER 7 3/4 INCH X 1 1/4 INCH	1

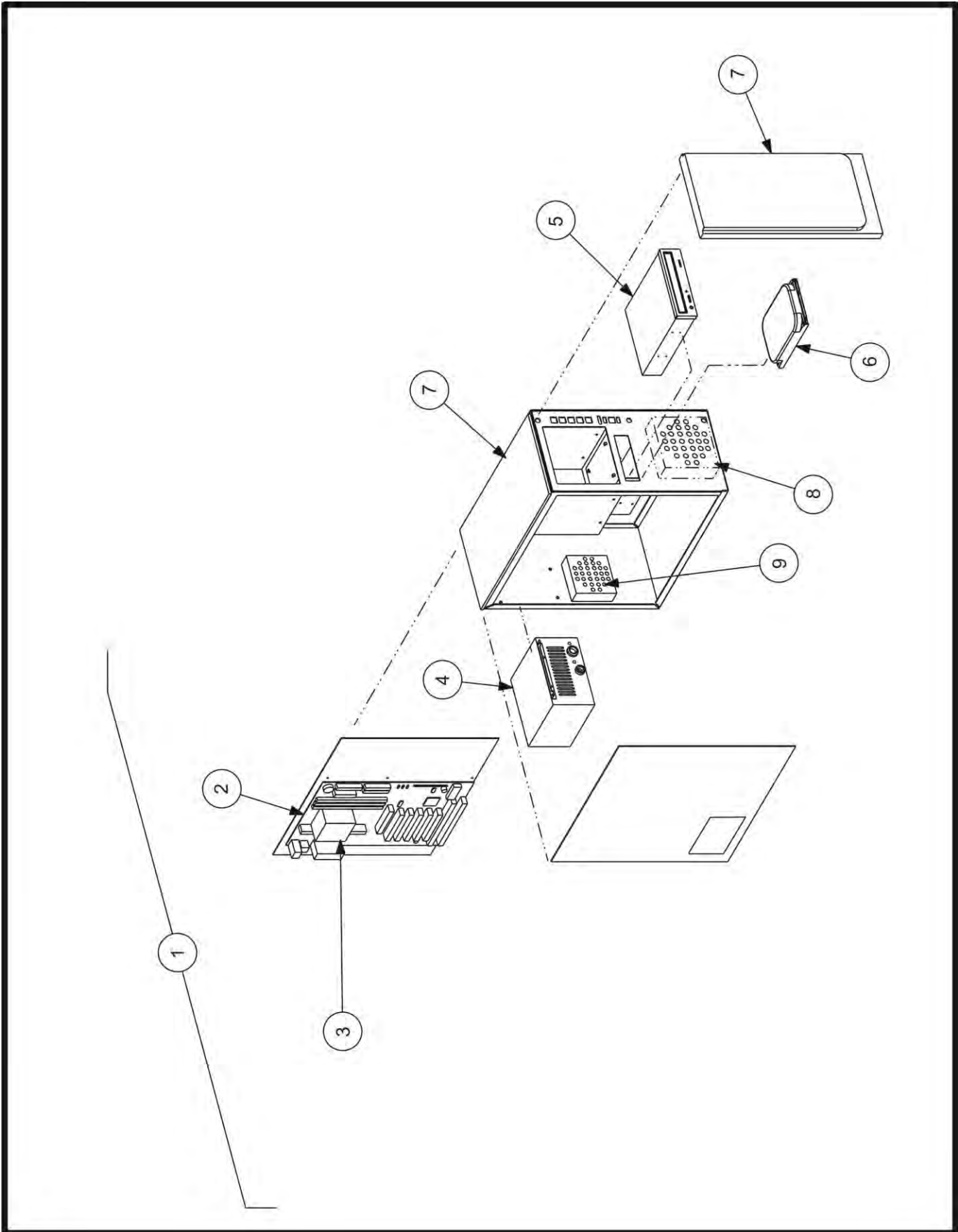


### USB BOX ASSEMBLY (G3A)

REFER TO NEXT SHEET FOR PARTS DESCRIPTION LISTING

PARTS DESCRIPTION LISTING

Index No.	Part Number	Description	Qty.
1	232-246-1	ELECTRICAL ASSEMBLY, USB INTERFACE BOX G3A	1
2	128-1311-2	DECAL, USB INTERFACE BOX G3	1
3	128-1328-2	DECAL, SENSOR POWER MODE UHIBG3	1
4	136-102-1	FILTER/SWITCH/FUSE ASSEMBLY,USB INTF G3	1
5	18-535-1	SWITCH ASSEMBLY,UIBX G3 SNR POWER MODE	1
6	21-749-2	CONNECTOR, AC JUNCTION BLOCK	1
7	232-241-2	POWER SUPPLY, 12V 100W OPEN 1.5 INCH HEIGHT	1
8	36-62-1	RECEPTACLE ASSEMBLY, UIBX G3 IEC C13	1
9	37-594-1	WIRE ASSEMBLY, USB INTF G3 IEC 4 SKT	1
10	37-595-1	WIRE ASSEMBLY, USB INTF G3 PS AC	1
11	37-596-1	WIRE ASSEMBLY, USB INTF G3 PS DC	1
12	37-602-1	WIRE ASSEMBLY, UIBX G3 STANDBY CONNECTOR	1
13	45-1359-1	PCA, USB INTERFACE G3A	1
14	51-2509-1	PLATE ASSEMBLY, BOARD SUPPORT USB BOX G3A	1
15	67-699-1	BOX ASSEMBLY,USB INTERFACE G3	1
16	69-1341-005	LID, USB BOX G3A	1
17	75-16-2	ROUND HEAD MACHINE SCREW 6-32 X 1/4 INCH	11
18	75-171-2	ROUND HEAD MACHINE SCREW 4-40 X 5/16 INCH	2
19	75-312-2	TRUSS HEAD MACHINE SCREW 10-32 X 1/2 INCH	4
20	75-359-2	PAN HEAD SHEET METAL SCREW 6 X 3/8 INCH TRILOBULAR	2
21	75-384-2	ROUND HEAD MACHINE SCREW 4-40 X 1.50 INCH LONG	4
22	77-79-2	WASHER, FLAT 4 SPECIAL	2
23	128-338-2	LABEL, PC BOARD, S/N BARCODE	1
24	33-89-2	FUSE, MDL6 SLO-BLO (Japan Only)	1
OR	33-46-2	FUSE-3 AMP SLO-BLO	
25	37-521-1	WIRE ASSEMBLY, USB BOX JUMPER	1
26	30-518-1 or 30-524-1	MOBILE CABINET (Consisting Of:)	1
27	37-504-1	WIRE ASSEMBLY, USB BOX SENSOR CHARGE (Not Illustrated)	1
28	38-963-2	CABLE, USB 2.0 A/B 1 METER (Not Illustrated)	1
29	136-95-2	FILTER, SURGE SUPPRESSOR (Not Illustrated)	1
30	38-428-2	CABLE, 18/3 SO/STO CONSOLE POWER (Not Illustrated)	1
31	12-163-2	CLAMP, P CLIP 3/8 INCH I.D. RUBBER (Not Illustrated)	1
32	38-954-2	CABLE, USB A-TO-B (Not Illustrated)	2
33	38-911-2	CABLE, MONITOR POWER TO PC POWER (Not Illustrated)	3



## REPLACEMENT PC AND PC COMPONENTS

REFER TO NEXT SHEET FOR PARTS DESCRIPTION LISTING



**PARTS DESCRIPTION LISTING**

Index No.	Part Number	Description	Qty.
1	30-511PALLSS01	REPLACEMENT HW1B PC (Configured)	1
2	45-1387-2	DH61CR MOTHERBOARD WITH A CORE I3 PROCESSOR.	1
OR	45-1505-2	PCB- MOTHERBOARD UATX ASUS P8H61-M LE	
3	198-341-2-XXXX	INTEL CORE I3 CPU/FAN, XXXX SPEEDS 3100 OR 3300	1
OR	129-250-2	FAN ONLY	1
4	232-190-2	ATX-12V 24 PIN POWER SUPPLY	1
5	232-234-2	SATA DVD-RW / CD-RW COMBO DRIVE	1
6	232-266-2	120 GB ELECTRIC, PC SOLID STATE DRIVE	1
7	30-476-2	UATX PC CHASSIS (Case and Bezel)	1
8	129-227-2	FAN, 811-B PC CHASSIS (Front 80 mm)	1
9	129-228-2	FAN, 811 B PC CHASSIS (Rear 92 mm)	1
10	20-2195-1	KIT, WIRELESS NETWORK	1
11	38-1073-2	CABLE, WIRELESS EXTENSION	1
12	45-1237-2	PCB, WIRELESS NEWTORK ADAPTOR	1
13	194-21-2	BATTERY FOR MOTHERBOARD (CR2032) (Not Illustrated)	1
14	232-233-2	OPTICAL USB MOUSE (Not Illustrated)	1
15	18-567-1-00	USB ALIGNER KEYBOARD AND COVER (Not Illustrated)	1
16	38-1016-2	CABLE, SATA HARD DISC DRIVE TO MOTHERBOARD (Not Illustrated)	1
17	38-1016-2	CABLE, SATA DVD-ROM/CD-RW TO MOTHERBOARD (Not Illustrated)	1
18	38-1088-2	CABLE, USB EXT 6FT (Not Illustrated)	2
19	38-768-2	CABLE STEREO JUMPER (Not Illustrated)	1
20	136-95-2	AC SUPPLY VOLTAGE LINE FILTER (Optional) (Not Illustrated)	1
21	45-1365-2	4 GB DDR3 RANDOM ACCESS MEMORY (2 x 2GB module) (Not Illustrated)	1
22	14-1545-005	BRACKET, CAT 5 COUPLE PANEL MOUNT (Not Illustrated)	1