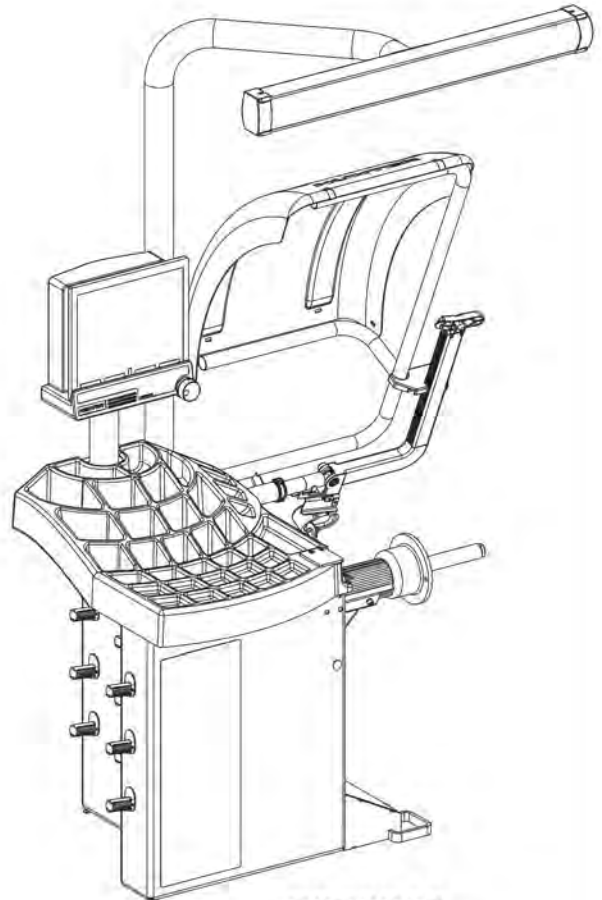
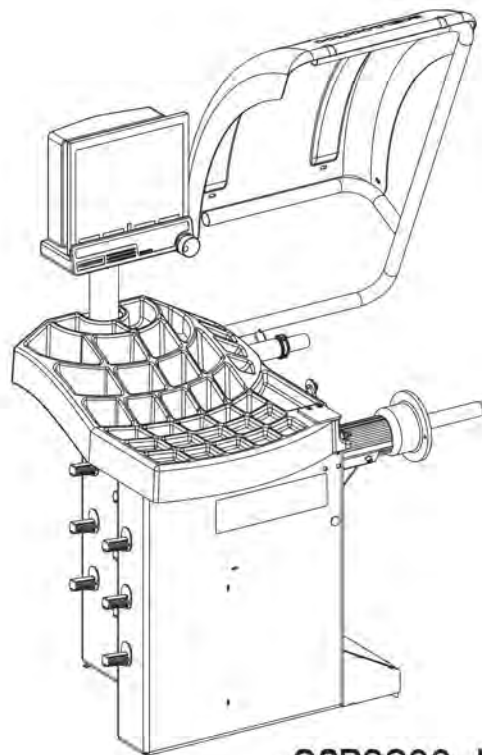


DSP9200



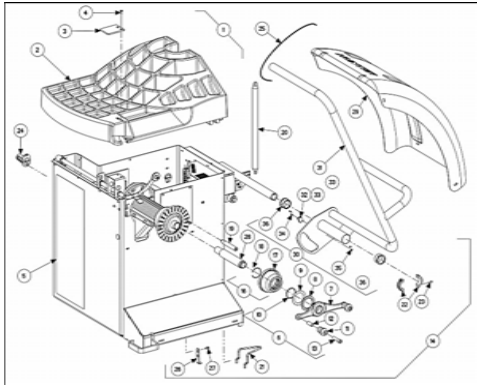
GSP9200

(SHOWN WITH OPTIONAL TDC)

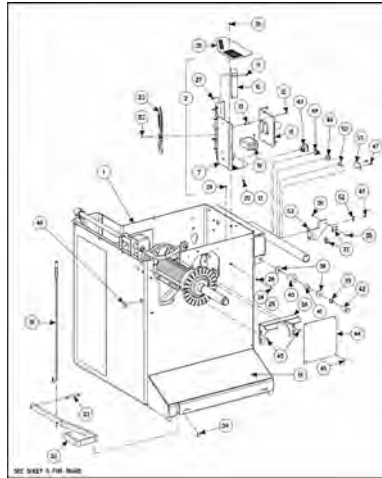


GSP9200 LITE

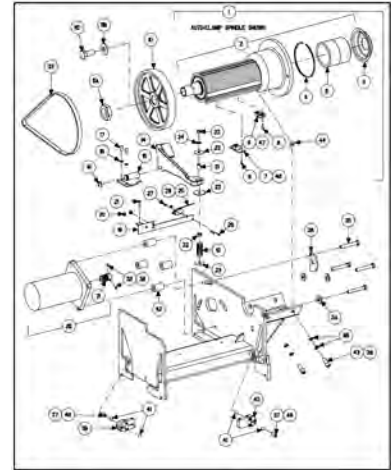
DSP9200 / GSP9200 LITE / GSP9200 SERIES BALANCERS



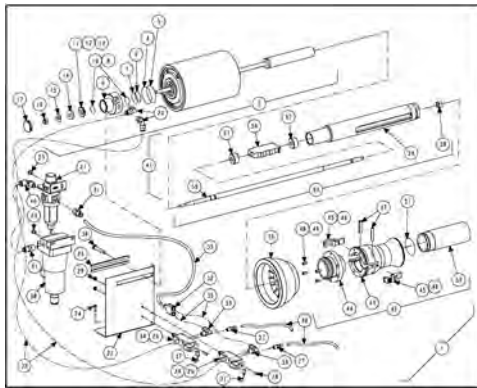
SHEET 3



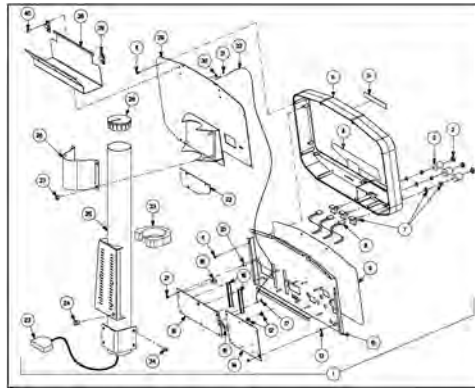
SHEET 4



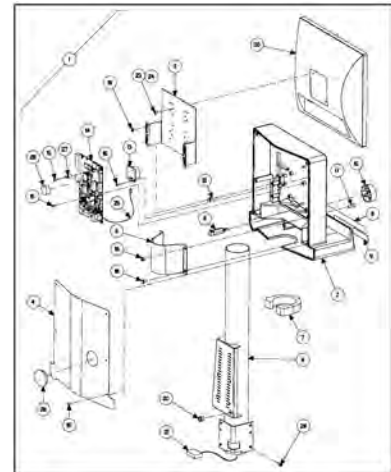
SHEET 5



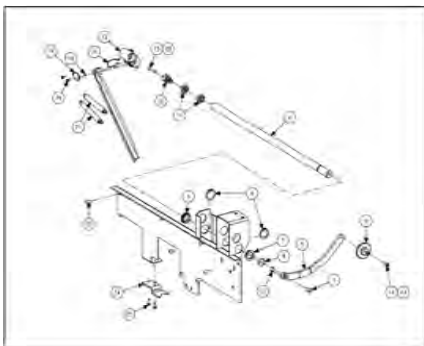
SHEET 6



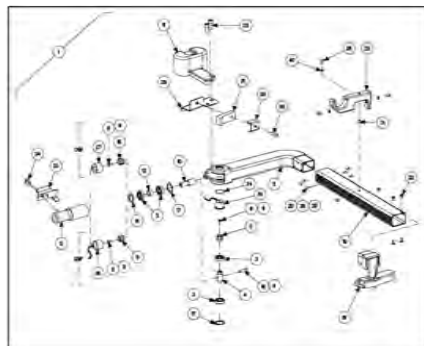
SHEET 7



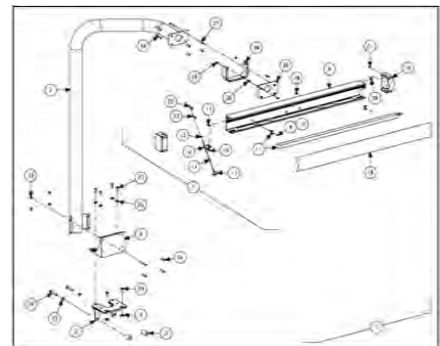
SHEET 8



SHEET 9



SHEET 10



SHEET 11

DSP9200 / GSP9200 LITE / GSP9200 SERIES BALANCERS

REFER TO NEXT SHEET FOR PARTS DESCRIPTION LISTING

PARTS DESCRIPTION LISTING

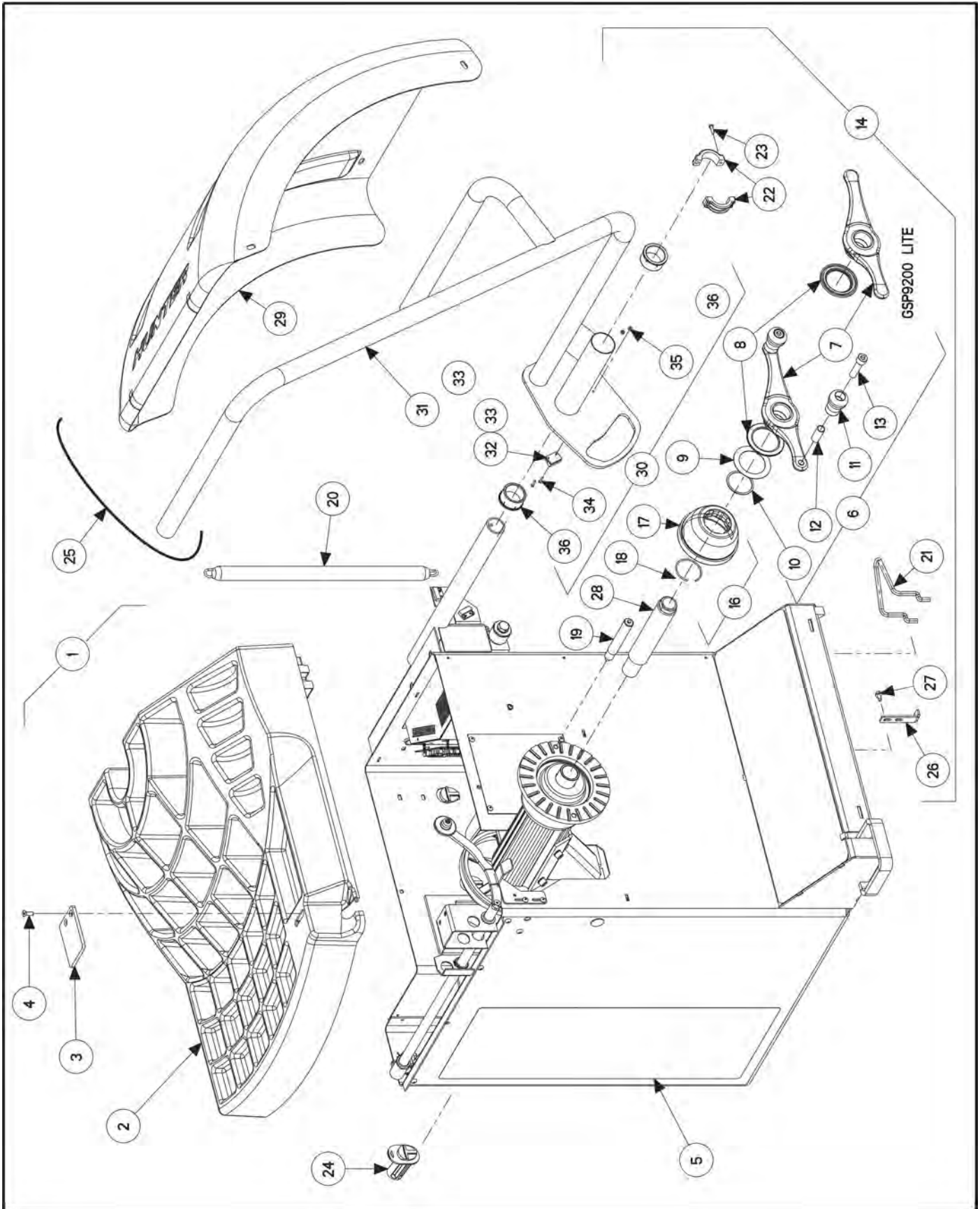
Sheet No.	Sheet Description	<i>PDF NAVIGATION: Click on description or thumbnail image to go to referenced sheet. To open sheet under new tab, click with middle button or Ctrl-click (browser dependent)</i>
3	WEIGHT TRAY, HOOD AND ETC (MOSTLY FIELD INSTALLED ITEMS)	
4	HOOD AND TUB COMPONENTS (FACTORY INSTALLED)	
5	VIBRATION STRUCTURE	
6	AUTOCLAMP FEATURE	
7	DSP9200 DISPLAY	
8	GSP9200 DISPLAY SUPPORT	
9	INNER DATASET	
10	OUTER DATASET	
11	TOP DEAD CENTER LASER SYSTEM	

BASE ASSEMBLIES

	Part Number	Description	BALANCERS
1	72-390-1-D-E	BASE, DSP BALANCER ASSEMBLY	DSP92
2	72-390-1-DD-E	BASE, DSP BALANCER ASSEMBLY	DSP992
3	72-391-1-DD-E	BASE, GSP BALANCER ASSEMBLY	GSP92
4	72-392-1-DD-E	BASE, GSP AUTO-CLAMP	GSP92
5	72-528-1-E	BASE, GSP9200 LITE BALANCER, EXPORT	GSP92 LITE

ACCESSORIES

	Part Number	Description
1	76-438-2	NUT, STEEL QUICKNUT
2	46-320-2	SPACER, SPINDLE SHAFT
3	106-82-2	SLEEVE, CLAMPING CUP
4	223-68-1	RING, BALANCER PRESSURE WITH RETAINER
5	65-72-2	WEIGHT, CALIBRATION
6	221-589-2	TOOL, WEIGHT HAMMER / PLIERS
7	221-658-2	TOOL, NYLON HAMMER HEAD
8	221-659-2	TOOL, ADHESIVE WEIGHT



WEIGHT TRAY, HOOD AND ETC (MOSTLY FIELD INSTALLED ITEMS)

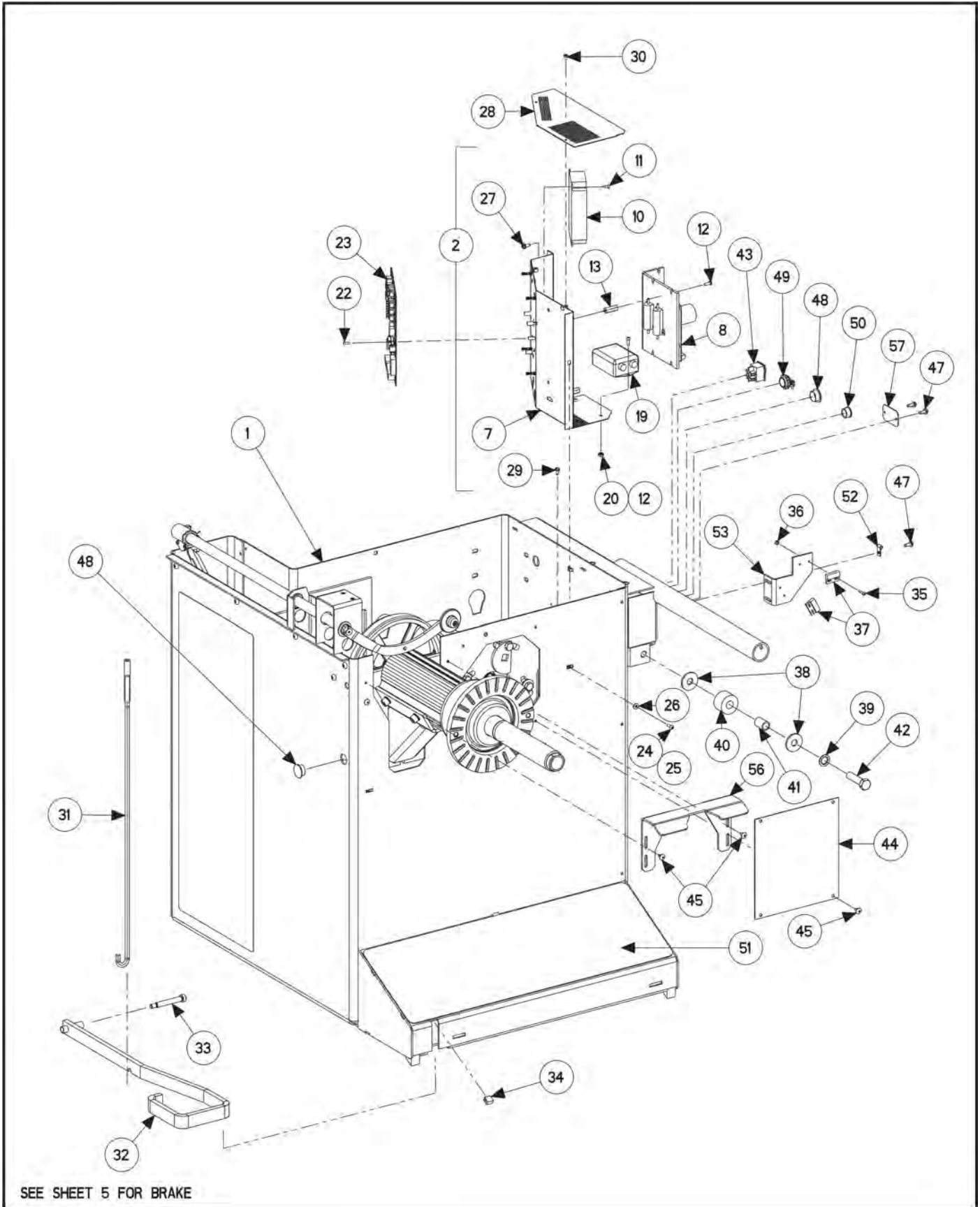
REFER TO NEXT SHEET FOR PARTS DESCRIPTION LISTING

PARTS DESCRIPTION LISTING

Form 12-23e, 07-13

Sheet 3 of 11

Index No.	Part Number	Description	Qty.
1	72-391-1-DD-E	BASE, GSP DD BALANCER ASSEMBLY (Consists Of:)	1
OR	72-392-1-DD-E	BASE, GSP DD AUTO-CLAMP (Consists Of:)	1
OR	72-390-1-DD-E	BASE, DSP DD BALANCER ASSEMBLY (Consists Of:)	1
OR	72-528-1-E	BASE, GSP9200 LITE BALANCER, EXPORT (Consists Of:)	1
2	69-1203-2	COVER, 9200 SMALL DIAMETER WEIGHT TRAY	1
3	51-2168-2	PLATE, WEIGHT ANVIL 9200	1
4	75-68-2	FLAT HEAD SOCKET CAP SCREW 1/4-20 X .75 INCH	2
5	128-1101-2	DECAL, DSP9200	1
OR	128-1103-2	DECAL, GSP9200	1
OR	128-1442-2	DECAL, GSP9200 LITE (Decal is much smaller than shown.)	1
6	76-433-1	NUT, FORGED WINGNUT WITH HANDLES (Not for Auto-Clamp) (Consists Of:)	1
OR	76-432-1	NUT, FORGED WINGNUT WITHOUT HANDLES (GSP9200 LITE) (Consists Of:)	1
7	76-426-2	NUT, FORGED WINGNUT (With handle holes)	1
OR	76-441-2	NUT, FORGED WITHOUT HANDLE HOLES (GSP9200 LITE)	1
8	130-145-2	BEARING, NEEDLE THRUST 55 mm INSIDE DIAMETER	1
OR	130-186-2	BEARING, MOLDED WINGNUT (GSP9200 LITE)	1
9	77-255-2	WASHER, THRUST 55 mm INSIDE DIAMETER 1 MM THICK	1
10	112-87-2	SNAP RING, SMALLEY WS-200	1
11	142-148-2	HANDLE, WINGNUT	2
12	106-154-2	SLEEVE, WINGNUT HANDLE	2
13	74-206-2	SOCKET HEAD CAP SCREW 1/2-13 X 2 INCH, FULL-THREAD	2
14	20-2149-1	KIT, DSP BALANCER ACCESSORIES (Consists Of:) (Partial List)	1
OR	20-2145-1	KIT, GSP BALANCER ACCESSORIES (Consists Of:) (Partial List)	1
15	Not Used	Not Used (Not Illustrated)	-
16	175-353-1	ADAPTOR, BALANCER CUP WITH RETAINER (Consists Of:)	1
17	175-352-2	ADAPTER, BALANCER CUP	1
18	41-138-2	RETAINER, ROUND WIRE, 2 INCH DIAMETER	1
19	65-72-2	WEIGHT, CALIBRATION	1
20	98-303-2	SPRING, HOOD	1
21	216-43-2	HOOK, LOWER SPRING MOUNT, GSP BALANCER	1
22	12-157-2	CLAMP HALF, 1.5 INCH SHAFT	2
23	75-35-2	ROUND HEAD MACHINE SCREW 10-32 X .63 INCH	2
24	233-44-2	POST, CONE HOOK PLASTIC	9
25	94-35-2	TIE-WIRE, 15 INCH X 1/2 INCH	4
26	14-1346-005	BRACKET, BALANCER LEG, LONG	1
27	75-317-2	SCREW, THREAD ROLLING 1/4-20 X 5/8 INCH	2
28	97-531-2	SHAFT, HOLLOW THREADED 40mm (Sheet 2)	1
29	69-1423-2	COVER, WHEEL GEN 4 EXPORT BALANCER	1
30	69-1464-1	COVER ASSEMBLY, WHEEL 9200 LITE (Consists Of:)	1
31	16-1039-1-005	TUBE ASSEMBLY, WHEEL COVER 9200 LITE	1
32	46-445	SPACER, MAGNET	1
33	60-24-2	MAGNET, REED SWITCH ACTUATOR	1
34	75-584-2	TRUSS HEAD MACHINE SCREW 4-40 X 5/8 INCH	2
35	76-366-2	NUT, LOCK 4-40 NYLON INSERT	2
36	130-141-2	BEARING, FLANGED 1.5 INCH X 1.0 INCH	2
37	128-1267-3	DECALS, DSP/GSP92 EXPORT (Not Illustrated)	1
38	128-1363-2	DECAL, MADE IN USA #3 (Not Illustrated)	1



HOOD AND TUB COMPONENTS (FACTORY INSTALLED)

REFER TO NEXT SHEET FOR PARTS DESCRIPTION LISTING

PARTS DESCRIPTION LISTING

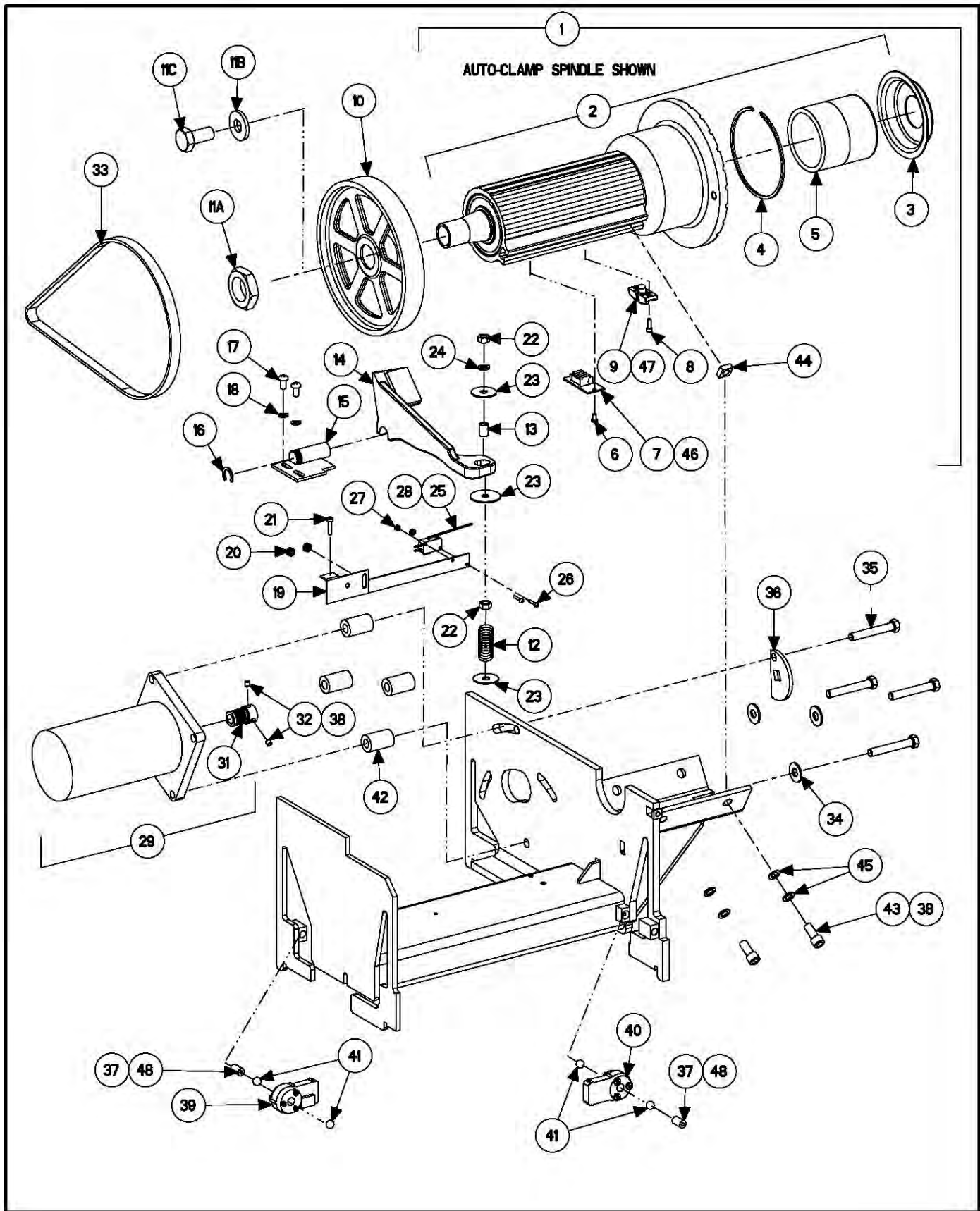
Index No.	Part Number	Description	Qty.
1	72-389-1-PPP	BASE, BALANCER WELDMENT TYPE 1	1
2	232-217-1	ELECTRONIC BOX, EXPORT FIREBOX 3A (Consists Of:)	1
3	37-561-1	WIRE ASSEMBLY, 9722 DAQ POWER (Not Illustrated)	1
4	37-562-1	WIRE ASSEMBLY, MOTOR (Not Illustrated)	1
5	38-1040-2	CABLE, 9722 EXPORT MONITOR & PRINTER (Not Illustrated)	1
6	38-1023-1	CABLE ASSEMBLY, 9200 POWER SUPPLY (Not Illustrated)	1
7	105-505-1	HOUSING ASSEMBLY, BALANCER POWER SUPPLY	1
8	232-193-2	DC MOTOR DRIVE, 230 VOLT / 3 AMP	1
9	37-560-1	WIRE ASSEMBLY, 9722 POWER SUPPLY OUTPUT (Not Illustrated)	1
10	232-90-2	POWER SUPPLY, 25 WATT SWITCHING	1
11	75-162-2	ROUND HEAD MACHINE SCREW 6-32X.31 INCH	4
12	75-26-2	ROUND HEAD MACHINE SCREW 8-32X.50 INCH	6
13	46-594-2	STANDOFF	4
14	59-48-2	STRAIN RELIEF, HEYCO #1237 (Not Illustrated)	1
15	37-557-1	WIRE ASSEMBLY, POWER SUPPLY 9200 (Not Illustrated)	1
16	128-188-2	LABEL, 1/4 X 1 INCH (Not Illustrated)	2
17	59-61-2	STRAIN RELIEF, HEYCO SR 34-2 (Not Illustrated)	1
18	38-994-1	CABLE, DSP9600 GROUND (Not Illustrated)	1
19	136-93-2	FILTER, DSP9200	1
20	76-71-2	NUT, KEPS 8-32	2
21	37-477-1	WIRE ASSEMBLY, 9700 POWER SWITCH	1
22	75-24-2	ROUND HEAD MACHINE SCREW 6-32 X .38 INCH	1
23	45-967-1-3	PCA, DSP9200 CONTROL	1
OR	45-1113-1-1	PCA, GSP9200 DATA ACQUISITION	1
AND	37-654-1	WIRE ASSEMBLY-4 POSITION JUMPER (At J27 & J28 for GSP9200 LITE only)	2
24	75-26-2	ROUND HEAD MACHINE SCREW 8-32 X .50 INCH	1
25	76-71-2	NUT KEPS 8-32	1
26	77-46-2	WASHER, FLAT 8	1
27	75-413-2	SCREW, SELF-TAPPING 10-32 X .50 INCH	5
28	69-1193	COVER, 9200 AND 9700 FIREBOX	1
29	75-682-2	SCREW, SELF-TAPPING 8-32 X 5/16 GREEN	1
30	75-102-2	PAN HEAD MACHINE SCREW 6-32 X .25 INCH	2
31	63-252-2*	ROD, BRAKE ACTUATOR (Refer to Sheet 5 for brake components.)	1
32	164-79-1-005*	LEVER ASSEMBLY, BRAKE FOOT PEDAL	1
33	74-351-2*	BOLT, SHOULDER 3/8 X 2 1/4 INCH	1
34	64-112-2*	PAD, EXTRUDED RUBBER	1
35	75-584-2	TRUSS HEAD MACHINE SCREW 4-40X 5/8 INCH	4
36	76-366-2	NUT, LOCK 4-40 NYLON INSERT	4
37	18-497-1	SWITCH, REED SWITCH ASSEMBLY	2
38	77-214-2	WASHER, FLAT 1/2 INCH SPECIAL	2
39	77-22-2	WASHER, LOCK 1/2 INCH INTERNAL TOOTH	1
40	228-25-2	STOP, 1.50 INCH OUTSIDE DIAMETER RUBBER TUBE	1
41	113-174-2	BUSHING, STEEL .69 OUTSIDE DIAMETER X .522 INCH INSIDE DIAMETER	1
42	74-345-2	HEX HEAD CAP SCREW 1/2-13 X 2 INCH, GRADE 5	1
43	18-270-2	SWITCH, DOUBLE-PULL SINGLE-THROW ROCKER	1
44	69-1028-PPP	COVER, SPINDLE DRIVE MOTOR	1
45	75-401-2	TRUSS HEAD SHEET METAL SCREW 10 X 1/2 INCH TYPE - AB	6
46	38-845-1	CABLE ASSEMBLY, POWER GSP9700 (Not Illustrated)	1
47	75-413-2	SCREW, SELF TAPPING 10-32X.50	7
48	43-129-2	PLUG, HEYCO PRY OUT .812 INCH DIAMETER	2
49	12-27-2	CLAMP, CABLE 1/2 INCH	1
50	113-179-2	BUSHING (Not Illustrated)	1
51	64-158-2	PAD, FOOT	1
52	12-145-2	CLAMP, CABLE 1/4 INCH DIAMETER	1
53	14-1103	BRACKET, HOOD SWITCH	1
54	37-490-1	WIRE ASSEMBLY, DSP400L POWER SWITCH (Not Illustrated)	1
55	38-911-2	CABLE, MONITOR POWER TO PC POWER (Not Illustrated)	1
56	14-1231-005	BRACKET, SUPPORT / SHIELD	1
57	69-1233	COVER, TDC LASER PLUG COVER	1

* Parts identified with an asterisk are not included with GSP9200 LITE Balancers.

HUNTER
Engineering Company

PPP-Paint Code Required
A/R-As Required
REF-Reference

11250 HUNTER DRIVE BRIDGETON, MO 63044



VIBRATION STRUCTURE

REFER TO NEXT SHEET FOR PARTS DESCRIPTION LISTING

PARTS DESCRIPTION LISTING

Form 12-23e, 07-13

Sheet 5 of 11

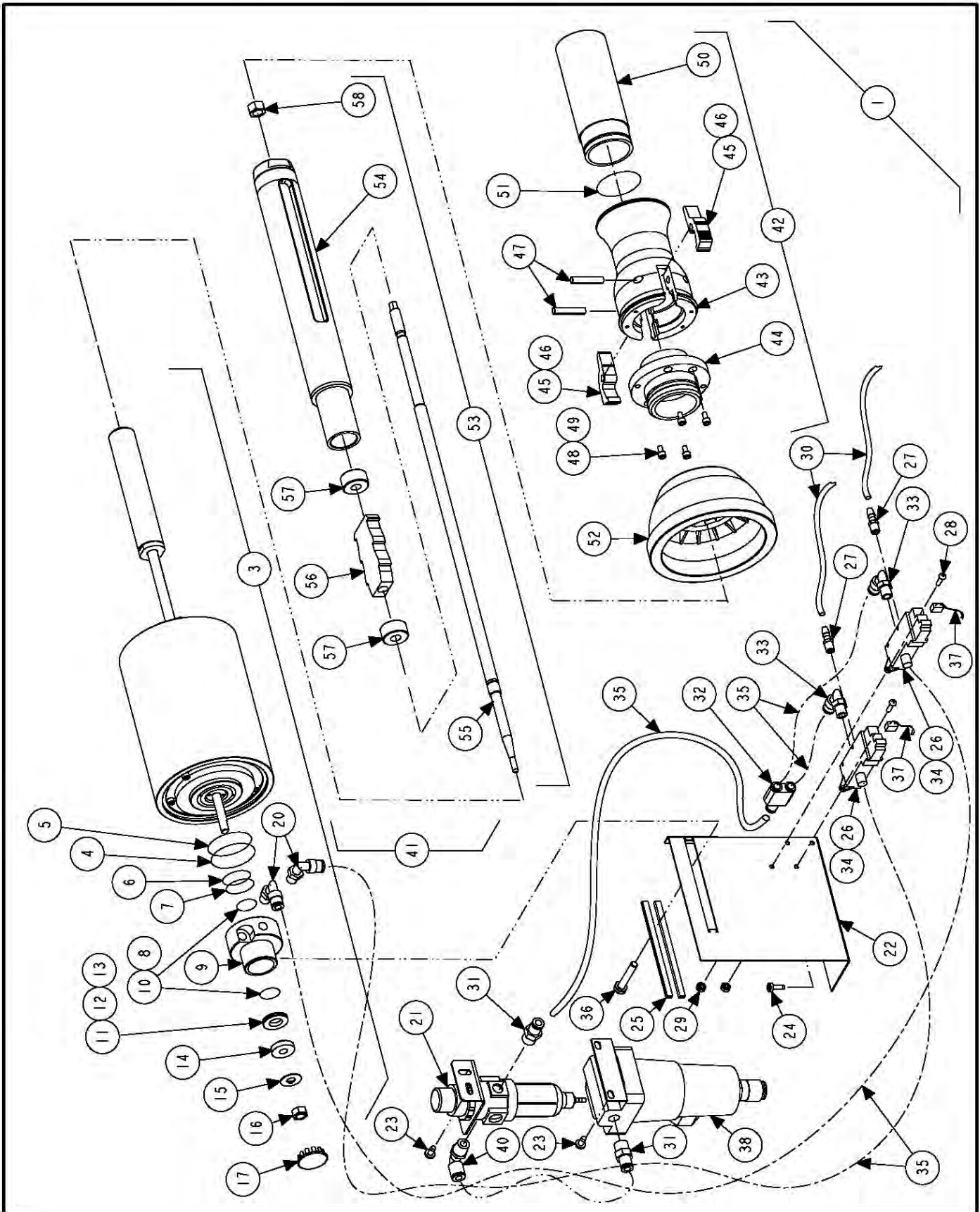
Index No.	Part Number	Description	Qty.
1	105-492-1	HOUSING, SPINDLE W/ LASER & ENCODER – AUTO-CLAMP & GSP (Con. Of:)	1
OR	105-494-1	HOUSING, SPINDLE WITH ENCODER – DSP (Con. Of:)	1
2	105-486-1	HOUSING, SPINDLE / DRIVE ASSEMBLY (Includes:)	1
3	41-134-2	RETAINER, SPRING COVER	1
4	112-112-2	SNAP RING, INTERNAL 115 mm	1
5	98-381-2	SPRING CONE	1
6	75-73-2	ROUND HEAD MACHINE SCREW 8-32 X .31 INCH	2
7	45-1159-1	BALANCER SPINDLE ENCODER	1
8	75-272-2	SOCKET HEAD CAP SCREW 8-32 X .50 INCH, FULL-THREAD (GSP Only)	2
9	105-493-1	HOUSING, LASER (GSP ONLY)	1
OR	53-155-2	PLUG, PLASTIC FOR 5/8 INCH HOLE (DSP Only)	1
10	107-118-2	PULLEY, DRIVEN WITH BALANCE BAND	1
11A	76-470-2	NUT, AUTOCLAMP PULLEY NUT (For Auto-Clamp)	1
11B	77-239-2	WASHER, FLAT 5/8 INCH SPECIAL (NOT For Auto-Clamp)	1
11C	74-365-2	HEX HEAD CAP SCREW M16-2X35 mm GRADE 8.8 (NOT For Auto-Clamp)	1
12	98-416-2*	SPRING, BRAKE RELEASE	1
13	106-155-2*	SLEEVE, BRAKE ISOLATOR	1
14	164-89-1*	LEVER, SPINDLE BRAKE ASSEMBLY	1
15	177-67-1-005*	PIVOT, SPINDLE BRAKE ASSEMBLY	1
16	112-21-2*	SNAP RING-#5103-75	1
17	75-176-2*	ROUND HEAD MACHINE SCREW 1/4 – 20 X 1/2 INCH	2
18	77-71-2*	WASHER, LOCK 1/4 INCH HELICAL SPRING	2
19	14-1132*	BRACKET, FOOT PEDAL SWITCH	1
20	76-61-2*	NUT, KEPS 10-32	2
21	75-414-2*	PAN HEAD MACHINE SCREW 8-32 X 3/4 INCH	1
22	76-37-2*	NUT, HEX 5/16-18	2
23	77-180-2*	WASHER, FENDER 5/16 INCH	3
24	77-60-2*	WASHR, LOCK 5/16 INCH HELICAL SPRING	1
25	18-454-2*	SWITCH, MINI SINGLE-PULL DOUBLE-THROW 2.93 INCH LEVER	1
26	75-75-2*	ROUND HEAD MACHINE SCREW 4-40 X 5/8 INCH	2
27	76-366-2*	NUT, LOCK 4-40 NYLON INSERT	2
28	38-1026-1*	CABLE ASSEMBLY, SPINDLE LOC	1
29	129-231-1	MOTOR, DC, 9200 BALANCER without firebox (Includes:)	1
OR	129-230-1	MOTOR, DC, 9200 BALANCER with firebox (Includes:)	1
30	55-18-2	CORE, FERRITE (CYLINDRICAL) (Not Illustrated)	1
31	107-114-2	PULLEY, 9200 BALANCER	1
32	75-66-2	SOCKET SET SCREW 1/4-20 X 1/4 INCH CUP POINT	2
33	126-48-2	BELT, POLY-V DRIVE 330J10	1
34	77-66-2	WASHER, FLAT 3/8 TYPE A-W	3
35	74-68-2	HEX HEAD CAP SCREW 3/8-16 X 2.5 INCH	4
36	172-34-2	CAM, BELT TENSIONER	1
37	74-476-3	SOCKET SET SCREW 3/8-24 WITH NYLON	2
38	FIELD PURCHASE	ADHESIVE, THREAD LOCKING (LOCTITE 222)	A/R
39	109-128-3	TRANSDUCER, LEFT FORCE	1
40	109-129-3	TRANSDUCER, RIGHT FORCE	1
41	130-60-2	BEARING, 13/32 INCH DIAMETER CERAMIC	4
42	46-422-2	SPACER, MOTOR	4
43	74-454-2	SOCKET HEAD CAP SCREW, 3/8-16 X 7/8 INCH	4
44	76-428-2	NUT, 3/8-16, .615 INCH SQUARE X .25 INCH	4
45	77-297-2	WASHER, FLAT 3/8 INCH	8
46	38-837-1	CABLE ASSEMBLY, SPINDLE ENCODER GSP BALANCER	1
47	37-559-1	WIRE ASSEMBLY, LASER SPINDLE HOUSING	1
48	FIELD PURCHASE	ADHESIVE, MEDIUM THREAD LOCKING (LOCTITE 242)	A/R

* Parts identified with an asterisk are not included with GSP9200 LITE Balancers.

HUNTER
Engineering Company

11250 HUNTER DRIVE BRIDGETON, MO 63044

PPP-Paint Code Required
A/R-As Required
REF-Reference

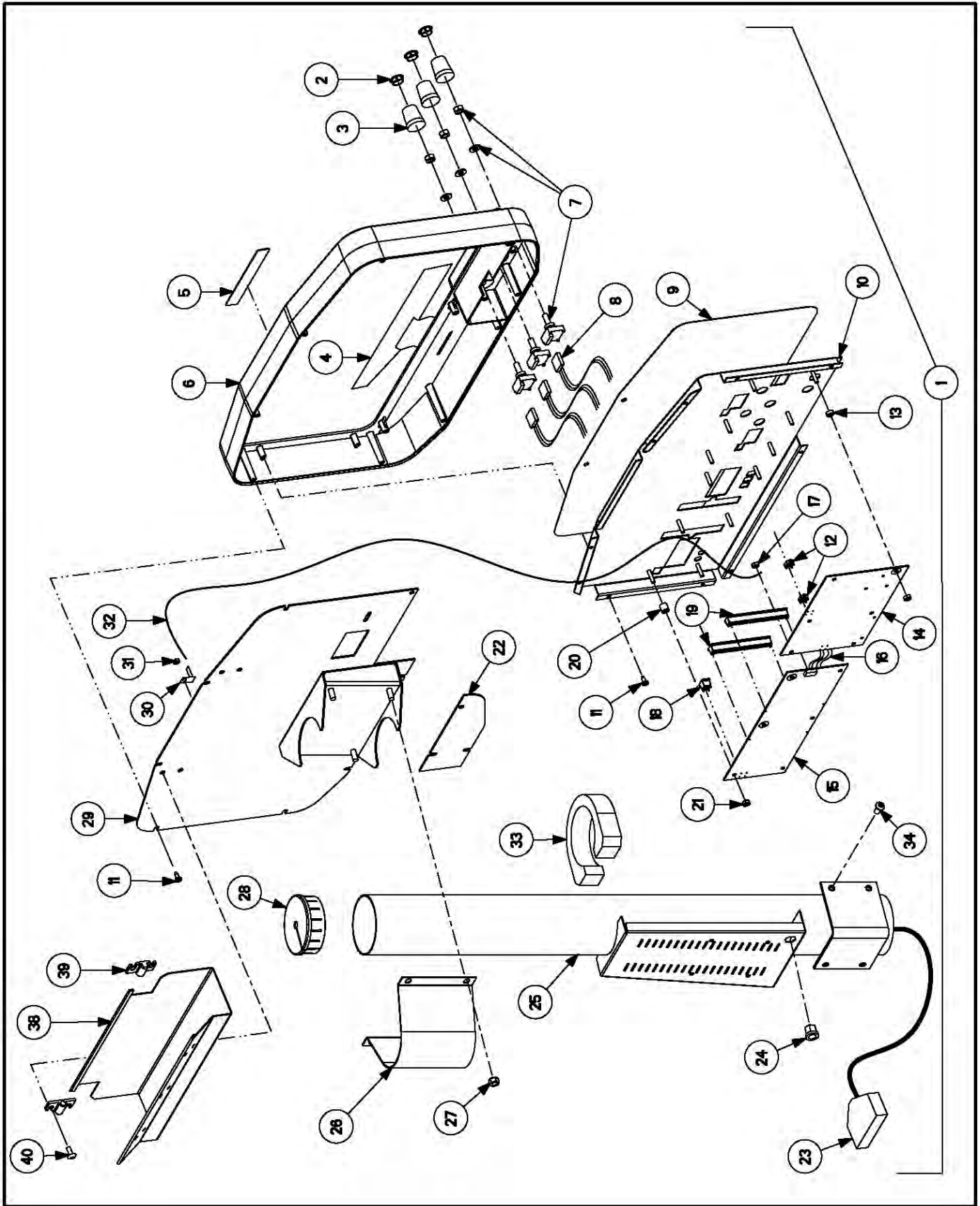


AUTOCLAMP FEATURE

REFER TO NEXT SHEET FOR PARTS DESCRIPTION LISTING

PARTS DESCRIPTION LISTING

Index No.	Part Number	Description	Qty.
1	72-392-1-DD-E	BASE, GSP DD AUTO-CLAMP (Consists Of:)	1
2	Not Used	Not Used (Not Illustrated)	-
3	140-86-1	CYLINDER ASSEMBLY, 4 INCH BORE AUTO-CLAMP (Includes:)	1
4	124-170-2	SEAL, O RING AS568A-223	1
5	124-168-2	SEAL, ROTARY OUTER	1
6	124-169-2	SEAL, ROTARY INNER	1
7	124-171-2	SEAL, O RING AS568A-213	1
8	Field Purchase	LUBRICANT, 3 IN 1 OIL	A/R
9	178-45-1	COUPLING ASSEMBLY, ROTARY AUTOCLAMP (Includes:)	1
10	124-172-2	SEAL, O RING AS568A-011 VITON	1
11	77-341-2	WASHER, THRUST BEARING 1/2 ID	2
12	130-196-2	BEARING, ROLLER THRUST, 1/2 ID	1
13	Field Purchase	LUBRICANT, EP-2 GREASE	A/R
14	113-265-2	BUSHING, COUPLING AUTOCLAMP	1
15	77-340-2	WASHER, INTERNAL TAB 8MM DIN462	1
16	76-439-2	NUT, LOCK 5/16-18 CONICAL TOP	1
17	53-159-2	CAP, 1 INCH HOLE STEEL PLUG	1
18	NOT USED	NOT USED	-
19	NOT USED	NOT USED	-
20	145-324-2	FITTING, 1/8 NPT TO 1/4 INCH TUBE, 90	2
21	136-78-2	FILTER / REGULATOR, GSP9700	1
22	14-1108	BRACKET, AUTO-CLAMP CYLINDER	1
23	75-522-2	SCREW, SELF TAPPING 10-32 X .38 INCH	2
24	75-327-2	SCREW, SELF TAPPING 8-32 X .50 INCH	3
25	113-258-2	BUSHING, PUSH ON TRIM	8 1/4 in.
26	108-169-2	VALVE, PNEUMATIC SOLENOID	2
27	145-386-2	FITTING, BARBED 3/16 INCH INSIDE DIAMETER X 1/16 NPT	2
28	75-49-2	ROUND HEAD MACHINE SCREW 6-32 X 1/2 INCH	4
29	76-84-2	NUT, KEPS 6-32	4
30	16-844-2	TUBE, 5/16 INCH OUTSIDE DIAMETER, EXHAUST	24 in.
31	145-273-2	FITTING, 1/4 INCH HOSE X 1/4 NPT	1
32	145-325-2	FITTING, 1/4 INCH "Y"	1
33	145-324-2	FITTING, 1/8 NPT TO 1/4 INCH TUBE, 90	2
34	145-281-2	FITTING, 1/4 INCH HOSE X 1/8 NPT (Not Illustrated)	2
35	16-843-2	TUBE, 1/4 INCH HOSE, FLEXABLE	40 in.
36	75-55-2	HEX HEAD CAP SCREW 1/4-20 x 1 1/2 INCH	1
37	38-948-1	CABLE, MANIFOLD ASSEMBLY	2
38	136-94-2	FILTER / REGULATOR, GSP AUTOCLAMP	1
39	137-96-1	HOSE ASSEMBLY, PNEUMATIC SUPPLY (Not Illustrated)	1
40	145-350-2	FITTING, 1/4 TUBE-1/4 NPT 90 ELBOW	1
41	20-2376-1	KIT BALANCER AUTO-CLAMP (Consists Of:)	1
42	184-86-1	HUB ASSEMBLY, AUTO-CLAMP (Consists Of:)	1
43	184-85-2	HUB, CLAMP CUP	1
44	217-61-2	COLLAR, AUTO-CLAMP CUP	1
45	144-105-2	LINK, PAWL AUTO-CLAMP	2
46	98-422-2	SPRING, TORSION AUTO-CLAMP	2
47	135-121-2	PIN, ROLL 1/4 INCH X 1 1/4 INCH	2
48	75-306-2	SOCKET HEAD CAP SCREW 8-32 X .31 INCH	4
49	Field purchase	LOCTITE # 271 OR PERMA BOND # HM128	A/R
50	106-156-2	SLEEVE, CLAMP	1
51	124-165-2	SEAL, O RING AS568A-030	1
52	175-353-1	ADAPTOR, BALANCER CUP WITH RETAINER	REF
53	97-587-1	SHAFT ASSEMBLY, AUTO-CLAMP OUTER (Consists Of:)	1
54	97-586-2	SHAFT, OUTER AUTO-CLAMP	1
55	97-585-2	SHAFT, OUTER WITH HEX	1
56	99-132-2	RATCHET, AUTO-CLAMP	1
57	113-280-2	BUSHING, OUTER SHAFT	2
58	76-458-2	NUT, GRIP 3/8-24	2

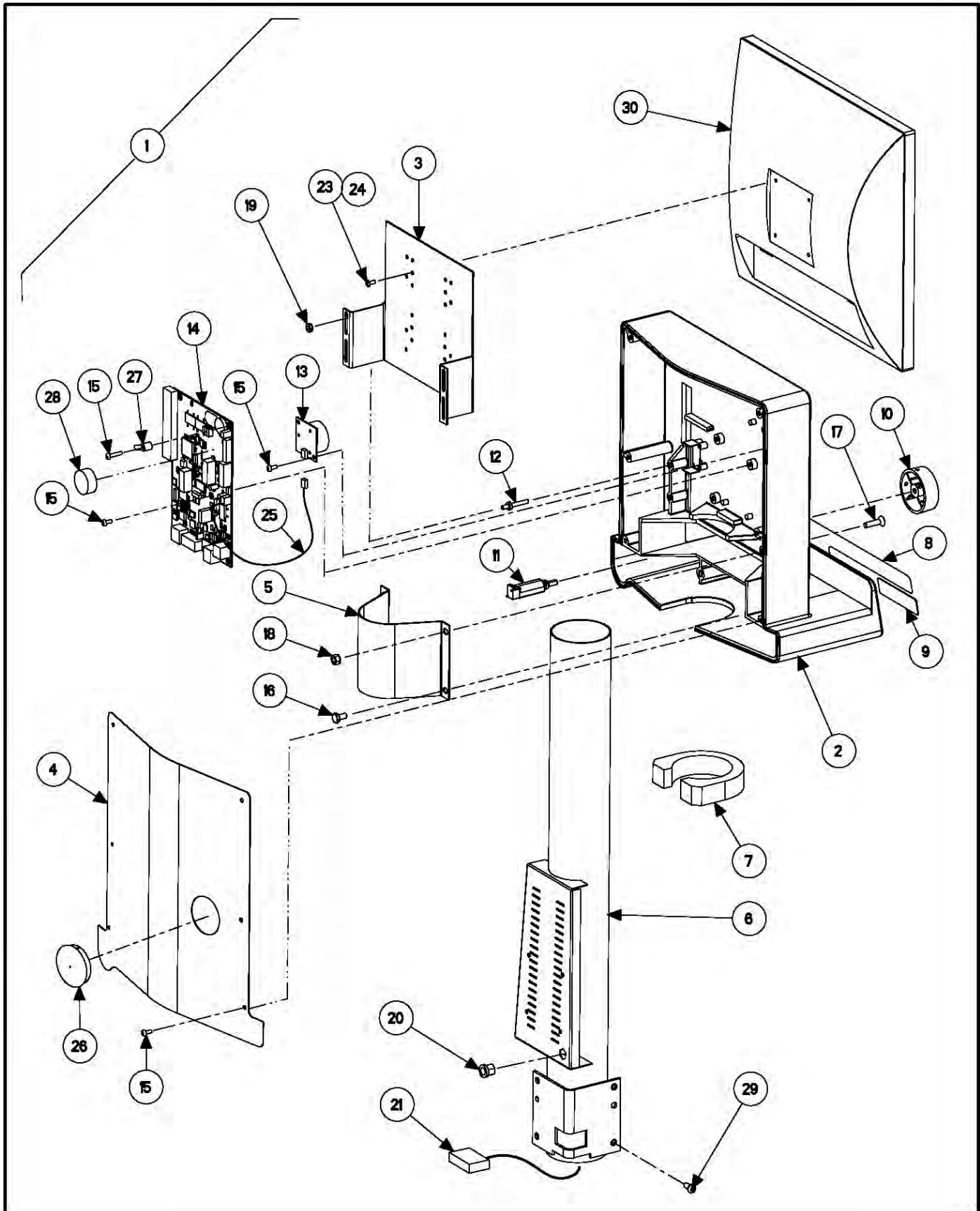


DSP9200 DISPLAY

REFER TO NEXT SHEET FOR PARTS DESCRIPTION LISTING

PARTS DESCRIPTION LISTING

Index No.	Part Number	Description	Qty.
1	11-1172-1	SUPPORT ASSEMBLY, DSP BALANCER (Consists Of:)	1
2	34-87-2	KNOB, CAP	3
3	34-86-2	KNOB, NUT COVER	3
4	18-479-2	SWITCH, MEMBRANE DSP9100	1
5	24-66-2	NAMEPLATE, HUNTER	1
6	149-294-2	BEZEL, DSP9600 BALANCER	1
7	18-302-2	SWITCH, ENCODER CONTACTING PC	3
8	38-981-1	CABLE ASSEMBLY, KNOB TO PCB	3
9	128-1096-2	OVERLAY, DSP9100 DISPLAY	1
10	73-1006-1-005	PANEL, DISPLAY DSP9600 PAINTED	1
11	75-629-2	SCREW, SELF TAPPING 8 X .38 INCH	21
12	66-19-2	SEPARATOR, 2 LED	2
13	46-540-2	SPACER, PCB	6
14	45-1167-1	PCA, DSP 9200 DISPLAY	1
15	45-1019-1	PCA, DSP 9600 DISPLAY (RIGHT)	1
16	38-980-1	CABLE, ASSEMBLY, PCB TO PCB	1
17	76-262-2	NUT, LOCK 8-32 NYLON INSERT	1
18	66-20-2	SEPARATOR, 2 LED TALL	1
19	66-18-2	SEPARATOR, 16 LED	2
20	46-541-2	SPACER, PCB	6
21	76-71-2	NUT, KEPS 8-32	12
22	73-1023-005	PANEL, ENCODER ACCESS	1
23	38-1029-2	CABLE, 4 FEET - 6 INCH LONG, 25 M TO 25 M DSUB	1
24	76-296-2	NUT, INSERT 3/8-16 HEX	1
25	11-1187-1	SUPPORT ASSEMBLY, BALANCER DISPLAY	1
26	12-197-005	CLAMP, BALANCER SUPORT TUBE	1
27	76-85-2	NUT, KEPS 1/4-20	4
28	53-152-2	CAP, SUPORT TUBE WITH WIRE HOLE	1
29	73-1025-1-005	PANEL ASSEMBLY, LED SUPPORT BALANCE	1
30	19-131-2	TERMINAL, TAB BENT	1
31	76-307-2	NUT, LOCK 6-32 NYLON INSERT	1
32	38-994-1	CABLE, DSP9600 GROUND	1
33	223-78-2	RING, FOAM BALANCER	1
34	75-481-2	SOCKET BUTTON HEAD CAP SCREW 1/4-20 X 1/2 INCH	4
35	20-2149-1	KIT, DSP BALANCER ACCESSORIES (Consists Of:) (Partial List)	REF
36	214-121-2	CHART-DSP9600 OPER PLACARDS (Not Illustrated)	1
37	214-122-2	CHART-BLT APPLICATION SPECS (Not Illustrated)	1
38	14-1092-005	BRACKET, PLACARD HANGER	1
39	160-48-2	HINGE, PLASTIC, PLACARDS	2
40	75-312-2	TRUSS HEAD MACHINE SCREW 10-32 X 1/2 INCH	4
41	223-74-2	RING-3/4" HINGED (Not Illustrated)	3



GSP9200 DISPLAY SUPPORT

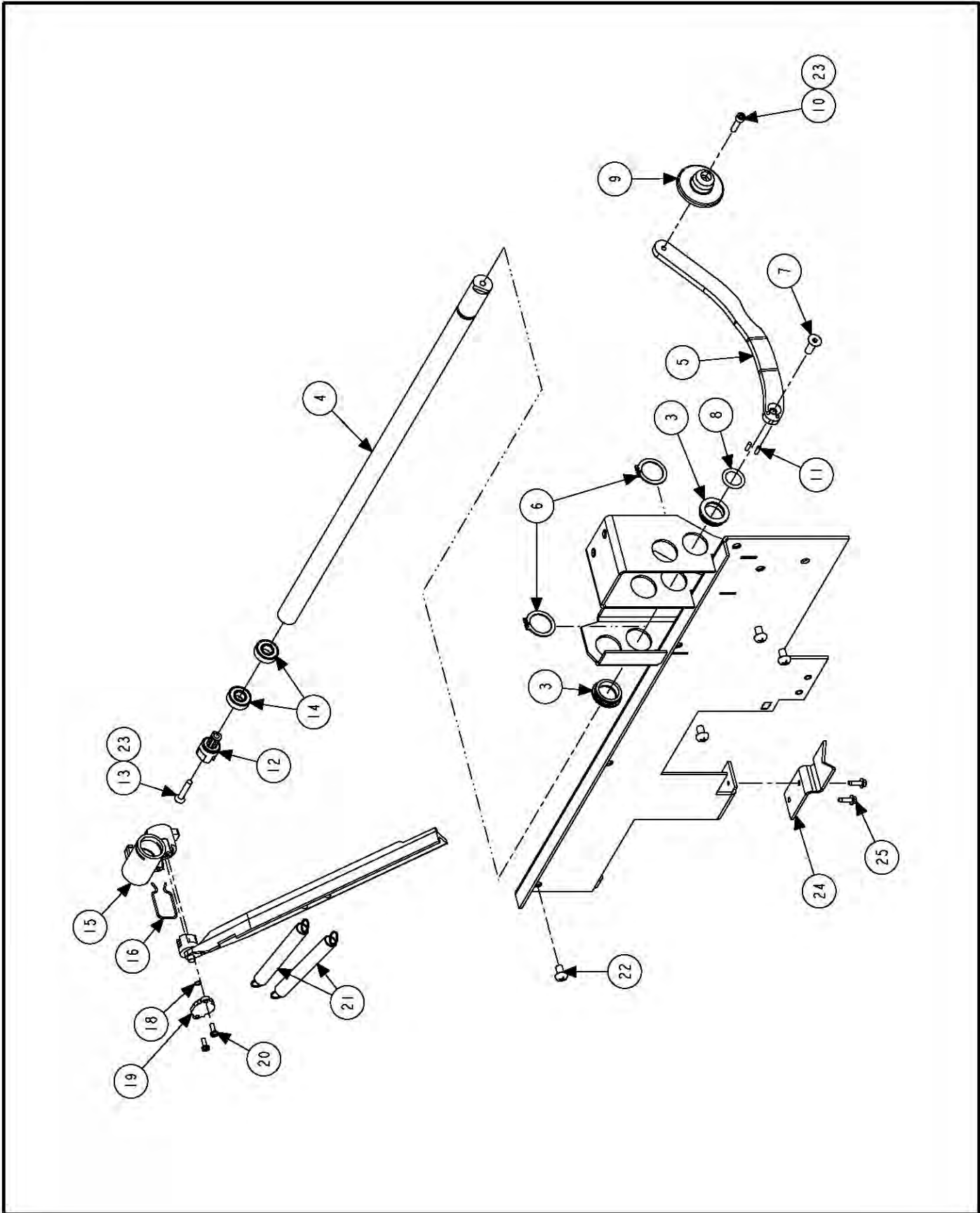
REFER TO NEXT SHEET FOR PARTS DESCRIPTION LISTING

PARTS DESCRIPTION LISTING

Form 12-23e, 07-13

Sheet 8 of 11

Index No.	Part Number	Description	Qty.
1	11-1304-1	SUPPORT ASSEMBLY, GSP DISPLAY BALANCER (Consists Of:)	1
2	11-1171-2	SUPPORT, LCD - KEYPAD - BALANCER	1
3	14-1090-005	BRACKET, LCD SUPPORT	1
4	69-1186-005	COVER, DISPLAY REAR GSP	1
5	12-197-005	CLAMP, BALANCER SUPPORT TUBE	1
6	11-1303-1-005	SUPPORT, DISPLAY PAINTED	1
7	223-78-2	RING, FOAM BALANCER	1
8	18-481-2	SWITCH MEMBRANE LCD DISPLAY (includes flex cable)	1
9	24-56-2	NAMEPLATE, HUNTER	1
10	34-157-2	KNOB, 2.25 INCH DIAMETER	1
11	18-450-2	SWITCH, ROTARY ENCODER	1
12	75-665-2	SCREW, ADJUSTING BALANCER LCD	4
13	45-1149-1	PCA, ROCK HOPPER BEEPER	1
14	45-1111-1	PCA, ROCK HOPPER CONSOLE	1
15	75-32-2	ROUND HEAD MACHINE SCREW 8-32 X 3/8 INCH	14
16	75-23-2	HEX HEAD CAP SCREW 1/4-20 X .50 INCH, FULL-THREAD	2
17	75-214-2	FLAT HEAD SOCKET CAP SCREW 1/4-20 X 1 INCH	2
18	76-85-2	NUT, KEPS 1/4-20	2
19	76-61-2	NUT, KEPS 10-32	4
20	76-296-2	NUT, INSERT 3/8-16 HEX	1
21	38-1024-1	CABLE ASSEMBLY, GSP INTERCONNECT	1
22	Not Used	Not Used	
23	75-659-2	PAN HEAD MACHINE SCREW M4 X .7 X 12 mm	4
24	75-679-2	PAN HEAD MACHINE SCREW M4 X .7 X 16 mm	4
25	37-558-1	WIRE ASSEMBLY, BEEPER 9200	1
26	43-142-2	PLUG, 2 INCH HOLE HEYCO 2783	1
27	41-170-2	RETAINER, SECURITY KEY (NOT required, if 45-1111-1 is rev. J or greater.)	1
28	194-24-2	BATTERY, COIN CELL 3 VOLTS	1
29	75-481-2	SOCKET BUTTON HEAD CAP SCREW 1/4-20 X 1/2 INCH	4
30	227-89-2	DISPLAY, 17 INCH LCD	1



INNER DATASET

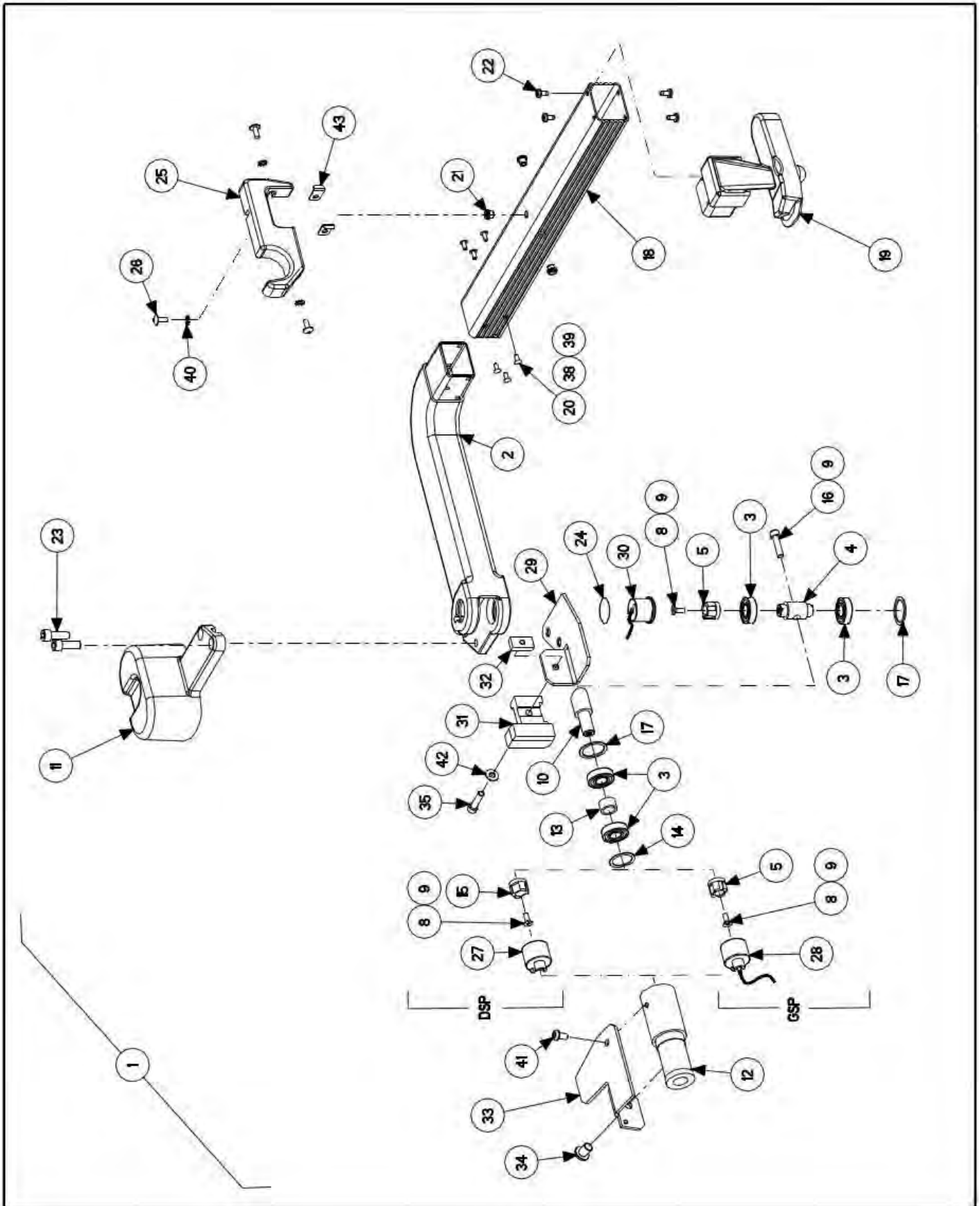
REFER TO NEXT SHEET FOR PARTS DESCRIPTION LISTING

PARTS DESCRIPTION LISTING

Form 12-23e, 07-13

Sheet 9 of 11

Index No.	Part Number	Description	Qty.
1	103-156-1	ARM ASSEMBLY, INNER DATASET FOR SMALL WHEEL (Consists Of:)	1
2	11-1180-1-005	SUPPORT ASSEMBLY, AUTO DATASET	1
3	130-184-2	BEARING, INNER DATASET	2
4	97-548-2	SHAFT, DSP EXPORT INNER DATASET	1
5	103-155-2	ARM, INNER DATASET SMALL WHEEL	1
6	112-88-2	SNAP RING, TRUARC #5100-100	2
7	75-68-2	FLAT HEAD SOCKET CAP SCREW 1/4-20 X .75 INCH	1
8	124-102-2	SEAL, O-RING #2-208	1
9	111-101-2	ROLLER, INNER ARM DATASET	1
10	75-83-2	SOCKET HEAD CAP SCREW 10-32 X .75 INCH, FULL-THREAD	1
11	135-406-2	PIN, ROLL 1/8 INCH X 3/8 INCH	2
12	176-50-1	LOCATOR ASSEMBLY, MAGNET	1
13	75-667-2	FLAT HEAD MACHINE SCREW 10-32 X 1.125 INCH	1
14	130-195-2	BEARING, BALL, 3/8 INCH INSIDE DIAMETER X 7/8 INCH OUTSIDE DIAMETER	2
15	125-445-1	SENSOR ASSEMBLY, INNER DATASET	1
16	98-415-2	SPRING, DATASET CLIP	1
17	176-52-1	LOCATOR ASSEMBLY, MAGNET	1
18	77-323-2	WASHER, WAVE SPRING .242 X .194 INCH	1
19	53-153-2	CAP, INNER DATASET	1
20	75-359-2	PAN HEAD SHEET METAL SCREW 6 X 3/8 INCH TRILOBULAR	2
21	98-331-2	SPRING, EXTENSION .5 INCH OUTSIDE DIAMETER	2
22	75-90-2	ROUND HEAD MACHINE SCREW 1/4-20 X 3/8 INCH	5
23	Field Purchase	ADHESIVE, THREAD LOCKING (Loctite #222)	A/R
24	177-63-005	PIVOT, INNER DATASET PAINTED	1
25	75-327-2	SCREW-SELF-TAPPING 8-32 X 1/2 INCH	2



OUTER DATASET

REFER TO NEXT SHEET FOR PARTS DESCRIPTION LISTING

PARTS DESCRIPTION LISTING

Form 12-23e, 07-13

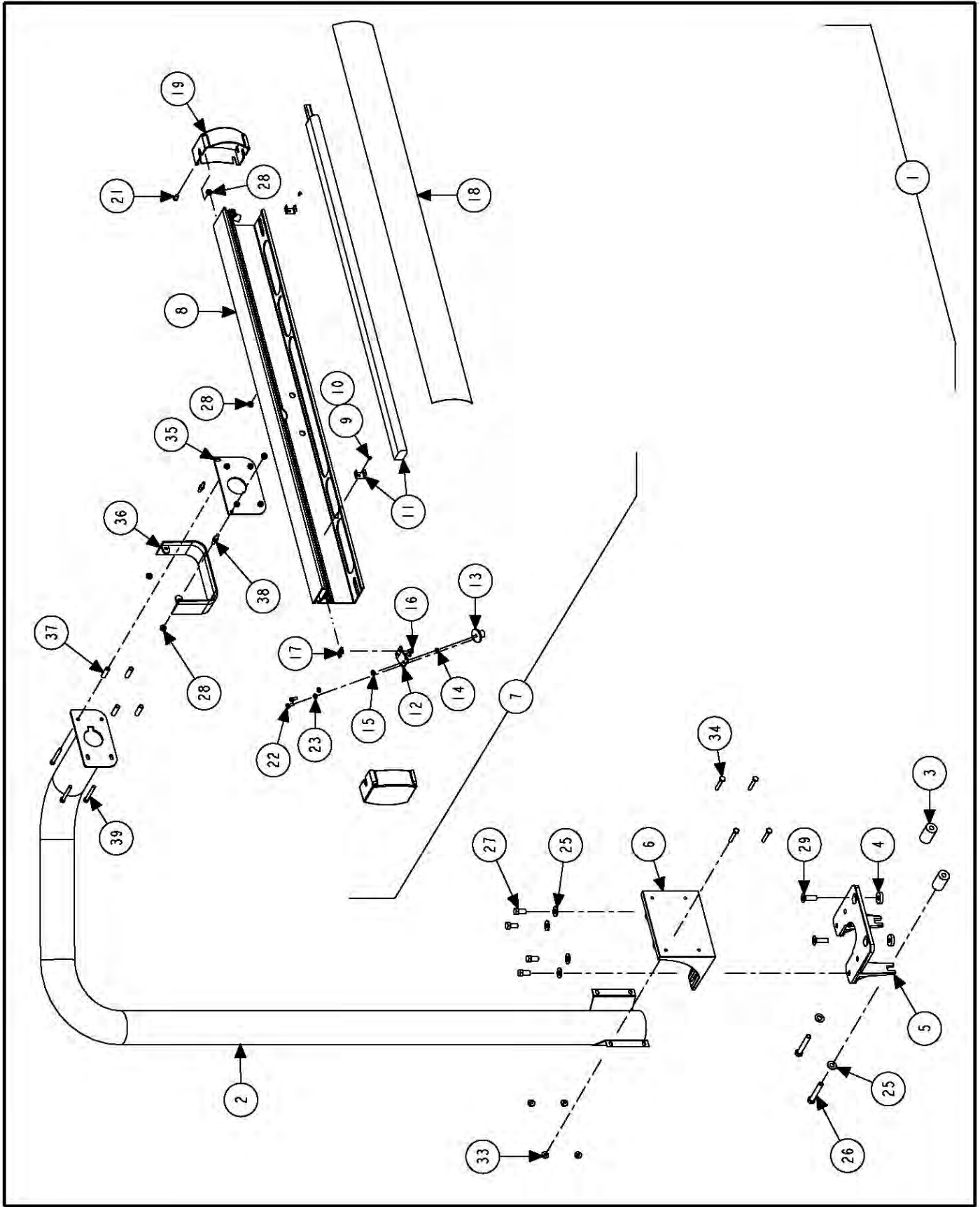
Sheet 10 of 11

Ind ex No	Part Number	Description	DSP Qty.	GS P Qty.
1	103-144-1	ARM ASSEMBLY, 9200 OUTER DATASET LT (For DSP9200) (Consists Of:)	1	-
OR	103-148-1	ARM ASSEMBLY, 9200 OUTER DATASET (For GSP9200) (Consists Of:)	-	1
2	105-475-011	HOUSING, DATASET ARM	1	1
3	130-172-2	BEARING, SEALED BALL	4	4
4	97-574-2	SHAFT, OUTER LATERAL (for 5/16 inch screw)	1	1
5	176-49-1	LOCATOR ASSEMBLY, MAGNET (Consists Of:)	1	2
6	Not Used	Not Used (Not Illustrated)	-	-
7	Not Used	Not Used (Not Illustrated)	-	-
8	75-508-3	FLAT HEAD MACHINE SCREW 10-32 X .50 INCH COATED	2	2
9	Field Purchase	ADHESIVE, THREAD LOCKING (Loctite 222 or 242)	A/R	A/R
10	97-573-2	SHAFT, RADIAL (for 5/16 inch screw)	1	1
11	65-85-005	WEIGHT, OUTER DATASET COUNTER	1	1
12	105-479-2	HOUSING, OUTER RADIAL BEARING	1	1
13	46-573-2	SPACER, OUTER DATASET	1	1
14	77-324-2	WASHER, WAVE SPRING 1.102 INCH X .85 INCH	1	1
15	176-47-2	LOCATOR, MAGNET	1	-
16	75-705-3	SOCKET HEAD CAP SCREW 5/16-18 X 1.00 INCH COATED	1	1
17	112-124-2	SNAP RING, INTERNAL 1.125 INCH	2	2
18	103-147-011	ARM, EXTRUDED OUTER DATASET	1	1
19	95-47-2	POINTER, OUTER DATASET DSP9600	1	1
20	48-57-2	RIVET, BLIND 5/32 INCH X 1/4 INCH	6	6
21	76-352-2	INSERT THREADED 10-32	3	3
22	75-522-2	SCREW, SELF TAPPING 10-32 X .38 INCH	4	4
23	74-376-2	SOCKET HEAD CAP SCREW, 5/16-18 X 7/8 INCH	2	2
24	124-117-2	O-RING .989 INCH INSIDE DIAMETER X .070 INCH CS BUNA-N	1	1
25	228-59-2	STOP, OUTER DATASET	1	1
26	75-312-2	TRUSS HEAD MACHINE SCREW 10-32 X 1/2 INCH	3	3
27	105-478-2	HOUSING, RADIAL SENSOR	1	-
28	125-394-1	SENSOR, HALL OUTER DATASET RADIAL	-	1
29	11-1363-1-005	SUPPORT ASSEMBLY, OUTER DATASET STOP	1	1
30	125-393-1	SENSOR, HALL OUTER DATASET LATERIAL	1	1
31	121-269-2	BLOCK, PIVOT STOP	1	1
32	76-480-2	NUT 1/4-20 PIVOT RETAINER	1	1
33	228-79-005	STOP, DATASET PIVOT	1	1
34	74-411-2	SOCKET BUTTON HEAD CAP SCREW 3/8-16X.63 INCH, FULL-THREAD	1	1
35	75-239-2	SOCKET BUTTON HEAD CAP SCREW 1/4-20 X 1.00 INCH	1	1
36	94-11-2	TIE-CABLE (Not Illustrated)	3	3
37	70-143-2	HARNESS, SPIRAL WRAP .25 INCH OUTSIDE DIAMETER BLACK (Not Ill.)	6 in.	6 in.
38	Field Purchase	ADHESIVE, LOCTITE DEPEND 330 NO-MIX	A/R	A/R
39	Field Purchase	ADHESIVE, LOCTITE DEPEND 330 ACTIVATOR	A/R	A/R
40	77-351-2	WASHER #10 EXTERNAL TOOTH	3	3
41	75-481-2	SOCKET BUTTON HEAD CAP SCREW 1/4-20 X .50 INCH	1	1
42	77-67-2	WASHER, FLAT 1/4 INCH	1	1
43	41-198-2	RETAINER, OUTER DATASET STOP	2	2

HUNTER
Engineering Company

11250 HUNTER DRIVE BRIDGETON, MO 63044

PPP-Paint Code Required
A/R-As Required
REF-Reference



TOP DEAD CENTER LASER SYSTEM

REFER TO NEXT SHEET FOR PARTS DESCRIPTION LISTING

PARTS DESCRIPTION LISTING

Index No.	Part Number	Description	Qty.
1	20-2166-1	KIT, TOP DEAD CENTER LASER SYSTEM (Consists Of:)	1
2	16-912-1-005	TUBE ASSEMBLY, TDC LASER SUPPORT	1
3	46-598-2	SPACER, TDC LASER 92XX .25 INCH	2
4	46-599-2	SPACER, TDC LASER 92XX 1.7 INCH	2
5	11-1243-2	SUPPORT, TDC LASER BASE 9700	1
6	14-1129-2	BRACKET, TDC LASER BASE	1
7	105-531-1	HOUSING, TDC LASER HEADER ASSEMBLY	1
8	105-514-2	HOUSING, TDC LASER HEADER	1
9	76-12-2	NUT, HEX 6-32	2
10	75-16-2	ROUND HEAD MACHINE SCREW 6-32 X 1/4 INCH	2
11	35-147-2	LAMP, FLUORESCENT 24 WATT, TDC LASER	1
12	14-1130-2	BRACKET, TDC LASER MOUNT	2
13	105-530-1	HOUSING, TDC LASER ASSEMBLY	2
14	98-427-2	SPRING, TDC LASER ADJUSTMENT	2
15	76-61-2	NUT, KEPS 10-32	2
16	75-608-2	PAN HEAD MACHINE SCREW 10-32 X .31 INCH	4
17	76-382-2	NUT-T	4
18	190-192-2	SIGN, TDC LASER SYSTEM	1
19	69-1204-2	COVER, TDC LASER END CAP	2
20	Field Purchase	ADHESIVE, LOCTITE 242	A/R
21	75-535-2	LOW HEAD SOCKET CAP SCREW 1/4-20X.38 INCH	2
22	75-161-2	PAN HEAD MACHINE SCREW 10-32 X .50 INCH	4
23	76-11-2	NUT, HEX 10-32	4
24	128-1155-2	DECAL, LASER COMPLIANCE 2M (Not Illustrated)	1
25	77-65-2	WASHER, FLAT 3/8 INCH	6
26	74-16-2	HEX HEAD CAP SCREW 3/8-16X2.50 INCH (FULL-THREAD)	2
27	74-59-2	HEX HEAD CAP SCREW 3/8-16 X .75 INCH (FULL-THREAD)	4
28	76-13-2	NUT, HEX 1/4-20	4
29	74-461-2	BOLT, FLAT HEAD SOCKET CAP SCREW 3/8-16 X 1/4 INCH	2
30	37-568-1	WIRE ASSEMBLY, TDC LASER LIGHT (Not Illustrated)	1
31	36-59-2	RECEPTACLE, IEC 320 FEMALE (Not Illustrated)	1
32	76-159-2	NUT, KEPS 3/8 – 16 (Not Illustrated)	4
33	76-367-2	NUT, FLANGE 1/4 - 20	4
34	75-703-2	HEX HEAD CAP SCREW 1/4-20 X 1.5 INCH GRADE 8	4
35	51-2332-1-005	PLATE, TDC HAMMERHEAD MOUNT ASSEMBLY	1
36	69-1271-2	COVER, TDC ADJUSTMENT	1
37	98-443-2	SPRING, TDC LASER ADJUSTMENT	4
38	134-141-2	STUD, 1/4-20 DOUBLE ENDED, BRASS	2
39	75-309-2	SOCKET HEAD CAP SCREW 1/4-20 X 2.00 INCH	4