

## HE421 TARGETS

REFER TO NEXT SHEET FOR PARTS DESCRIPTION LISTING

# PARTS DESCRIPTION LISTING

Form 4-162, 06-13  
Sheet 17 of 19

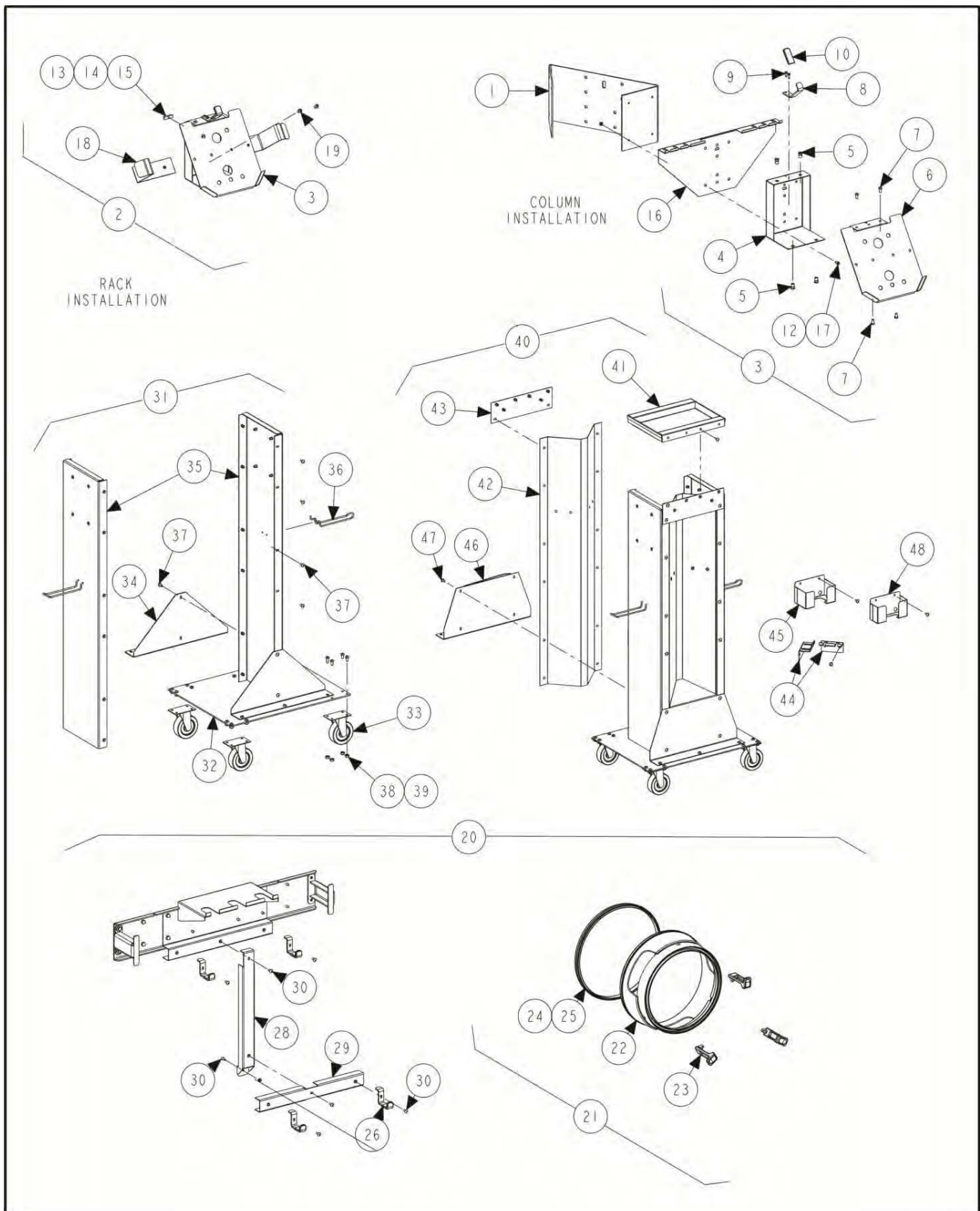
Index No.	Part Number	Description	Qty.
1	214-138-1	TARGET ASSEMBLY , 3D DOT LEFT-FRONT	1
2	214-139-1	TARGET ASSEMBLY , 3D DOT RIGHT-FRONT (Not Illustrated)	1
3	214-140-1	TARGET ASSEMBLY , 3D DOT LEFT-REAR (Not Illustrated)	1
4	214-141-1	TARGET ASSEMBLY , 3D DOT RIGHT-REAR (Not Illustrated)	1
5	105-584-2	HOUSING, DOT TARGET	1
6	128-1395-3 *	DECAL, 3D TARGET	1
7	128-1395-3 *	DECAL, 3D TARGET	1
8	34-197-3	KNOB, DOT TARGET	1
9	112-15-2	SNAP RING, #5133-50 OR EQUAL	1
10	51-2506-1-005	PLATE , MAGNET MAX STEER LEFT	1
OR	51-2507-1-005	PLATE , MAGNET MAX STEER RIGHT (Not Illustrated)	1
11	76-71-2	NUT, KEPS 8-32	2
12	128-1395-3 *	DECAL, 3D TARGET	1
13	128-1250-2	DECAL, TARGET POSITION LFT FRONT	1
OR	128-1251-2	DECAL, TARGET POSITION RT FRONT (Not Illustrated)	1
OR	128-1252-2	DECAL, TARGET POSITION LFT REAR (Not Illustrated)	1
OR	128-1253-2	DECAL, TARGET POSITION RT REAR (Not Illustrated)	1
14	128-1245-2	DECAL, TARGET POSITION LEFT	1
15	128-1246-2	DECAL, TARGET POSITIN RIGHT	1
16	128-1299-2	DECAL , HUNTER LOGO	1
17	128-1352-2	DECAL , TARGET POSITION LEFT FRONT	1
OR	128-1353-2	DECAL , TARGET POSITION RIGHT FRONT (Not Illustrated)	1
OR	128-1354-2	DECAL , TARGET POSITION LEFT REAR (Not Illustrated)	1
OR	128-1355-2	DECAL , TARGET POSITION RIGHT REAR (Not Illustrated)	1
18	128-1306-2	DECAL, BAY I.D. MARKS 3D TARGET(Not Illustrated)	1
19	20-2511-1	KIT , WIDE ANGLE 3D TARGET	1
20	214-142-1	TARGET ASSEMBLY , MAX STEER 3D LFT	1
21	214-143-1	TARGET ASSEMBLY , MAX STEER RIGHT (Not Illustrated)	1
22	105-583-2	HOUSING, MAX STEER	1
23	217-69-2	COLLAR, MAGNET	1
24	60-34-2	MAGNET , 2 POLE 50 POUND	1
25	75-740-2	SCREW, SELF-TAPPING PAN HEAD SHEET METAL SCREW 8-18 HI-LO	2
26	128-1266-2	DECAL , 6 DOT TARGET	2
27	218-206	TAB, MAX STEER TARGET INDEX	1
28	218-207-2	TAB , MAX STEER NAMEPLATE	1
29	75-495-2	SCREW, SELF-TAPPING 6 X .38 INCH	2
30	128-1335-2	DECAL, MAX STEER ID LEFT	1
OR	128-1336-2	DECAL, MAX STEER ID RIGHT (Not Illustrated)	1
31	128-1306-2	DECAL, BAY I.D. MARKS 3D TARGET (Not Illustrated)	1

\* One 128-1395-3 contains all three 3D target decals (items 6, 7 and 12). Target are grouped together to have more uniform reflective characteristics. Replacement of all three targets, instead of only one, is recommended.

**HUNTER**  
Engineering Company

11250 HUNTER DRIVE BRIDGETON, MO 63044

PPP-Paint Code Required  
A/R-As Required  
REF-Reference



## HE421 ADAPTOR HANGERS AND EXTENTIONS

REFER TO NEXT SHEET FOR PARTS DESCRIPTION LISTING

## PARTS DESCRIPTION LISTING

Form 4-162, 06-13

Sheet 18 of 19

Index No.	Part Number	Description	Qty.
1	11-1371-005	SUPPORT, ADAPTER HANGER POST	2
2	20-2528-1	KIT, CLAMP-ON ADAPTOR HANGERS (Consisting Of:)	1
3	11-1364-1	SUPPORT, CLAMP-ON ADAPTER (Consisting Of:)	4
4	11-1358-005	SUPPORT, BASE COA STORAGE	1
5	76-414-2	NUT, HEX INSERT 1/4-20	4
6	11-1359-005	SUPPORT, TOP COA STORAGE	1
7	75-481-2	SOCKET BUTTON HEAD CAP SCREW 1/4-20 X .50 INCH	4
8	218-201-005	TAB, COA TARGET STORAGE	1
9	75-441-2	SCREW, SELF-TAPPING 8-32 X .50 INCH	2
10	106-168-2	SLEEVE, RECT, 10GA	1
11	75-176-2	ROUND HEAD MACHINE SCREW 1/4-20 X 1/2 INCH (Not Illustrated)	8
12	75-716-2	SCREW, SELF-TAPPING 10-32 X .50 INCH	16
13	76-17-2	NUT, GRIP 1/4-20	4
14	75-728-2	HEX HEAD CAP SCREW, 1/4-20 X 1.25 INCH, GRADE 5	4
15	76-477-2	NUT, 1/4-20, RECTANGULAR	4
16	216-97-005	HOOK, BRACKET	4
17	76-61-2	NUT, KEPS 10-32	16
18	11-1400-1	SUPRT ASSEMBLY , QUICK GRIP HOOK	8
19	75-481-2	SOCKET BUTTON HEAD CAP SCREW 1/4-20 X .50 INCH	16
20	20-2522-1	KIT, CLAMP-ON EXTENTION (Consisting Of:)	1
21	46-652-1	SPACER, COA EXTENTION RING (Consisting Of:)	4
22	46-640-2	SPACER, 3-D ADAPTER	1
23	144-134-2	LATCH , DRAW 3D TARGET	3
24	179-75-2	SHIELD, PROTECTIVE RING SPACER	1
25	179-75-2	SHIELD, PROTECTIVE RING SPACER	4
26	216-98-1	HOOK ASSEMBLY, EXTENSION RING (Includes:)	4
27	106-168-2	SLEEVE, RECT, 10GA (Not Illustrated)	1
28	14-1271-1	BRACKET, HANGER, VERT ASSEMBLY	1
29	14-1284-1	BRACKET ASSEMBLY , HORIZONTAL SUPPORT	1
30	75-312-2	TRUSS HEAD MACHINE SCREW 10-32 X 1/2 INCH	6
31	20-2552-1 *	KIT, COA PORTABLE STORAGE (Consisting Of:)	1
32	51-2517-005	PLATE, BASE COA STORAGE RACK	2
33	158-85-2	WHEEL, 3 INCH SWIVEL	8
34	115-144-005	GUSSET, SIDE COA STORAGE RACK	4
35	73-1058-1	PANEL, ASSEMBLY COA STORAGE RACK	4
36	28-121-2	HOLDER, 5.25 INCH PEG BROAD U-HOOK	4
37	75-312-2	TRUSS HEAD MACHINE SCREW 10-32 X 1/2 INCH	32
38	75-758-2	SOCKET BUTTON HEAD CAP SCREW 1/4-20 X .63 INCH	36
39	76-85-2	NUT, KEPS 1/4-20	36
40	20-2792-1 *	KIT, WIDE ACCESSORY CART UPGRADE	1
41	69-1465-005	COVER, ACCESSORY CART TRAY	1
42	171-270-1	PANEL ASSEMBLY, ACCESSORY CART SIDE	2
43	51-2755-1	PLATE ASSEMBLY, ACCESSORY CART	2
44	216-117-005	HOOK, ACCESSORY CART STORAGE	4
45	11-1492-005	SUPPORT, BATTERY TESTER STORAGE	1
46	115-156-005	GUSSET - SUPPORT CART	2
47	75-312-2	TRUSS HEAD MACHINE SCREW 10-32X1/2 INCH	28
48	11-1384-005	SUPPORT, CODELINK STORAGE	Ref.

\* QC ships with one 20-2819-2 kit that contains both carts, a wide driver-side cart and a standard cart.

**HUNTER**  
Engineering Company

11250 HUNTER DRIVE BRIDGETON, MO 63044

PPP-Paint Code Required  
A/R-As Required  
REF-Reference